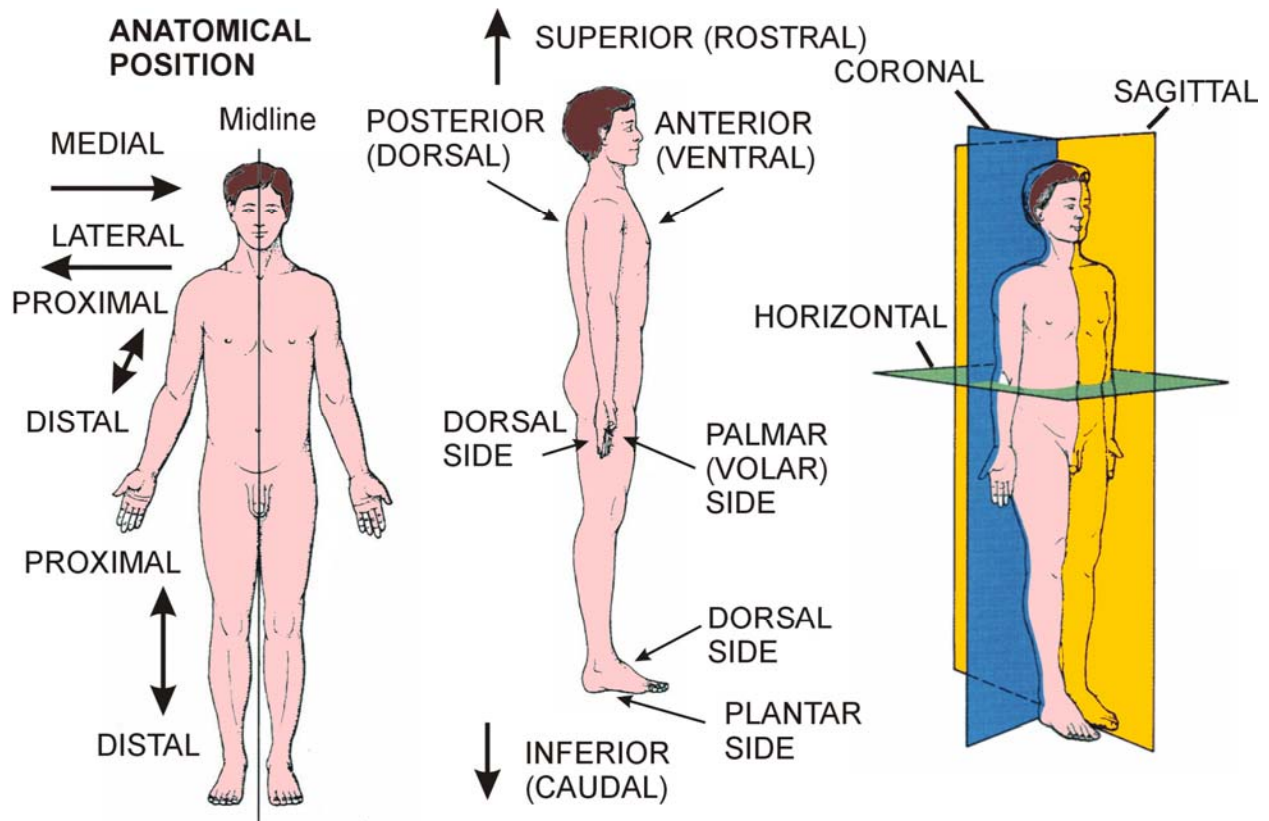


TERMINOLOGY: ANATOMICAL POSITION, TERMS, PLANES

©2021zillmusom



ANATOMICAL POSITION - Standing erect, feet together, face forward, arms at side, palms forward.

ANATOMICAL TERMS

MEDIAL - toward midline

LATERAL - away from midline

ANTERIOR = VENTRAL - front of body (nose is anterior)

POSTERIOR = DORSAL - back of body

SUPERIOR (ROSTRAL) - toward top of head

INFERIOR (CAUDAL) - toward bottom of feet

PROXIMAL - closer to trunk or origin of structure

DISTAL - farther from trunk or origin of structure

PALMAR (VOLAR) SURFACE OF HAND - palm side

DORSAL SURFACE OF HAND - back side of hand

PLANTAR SURFACE OF FOOT - sole of foot

DORSAL SURFACE OF FOOT - top of foot

ANATOMICAL PLANES

SAGITTAL PLANE - divides body into left right parts

MEDIAL SAGITTAL PLANE - divides body in left right halves

CORONAL (FRONTAL) PLANE - divides body into front and back parts

TRANSVERSE (HORIZONTAL PLANE) - plane perpendicular to body long axis; divides body in top and bottom parts