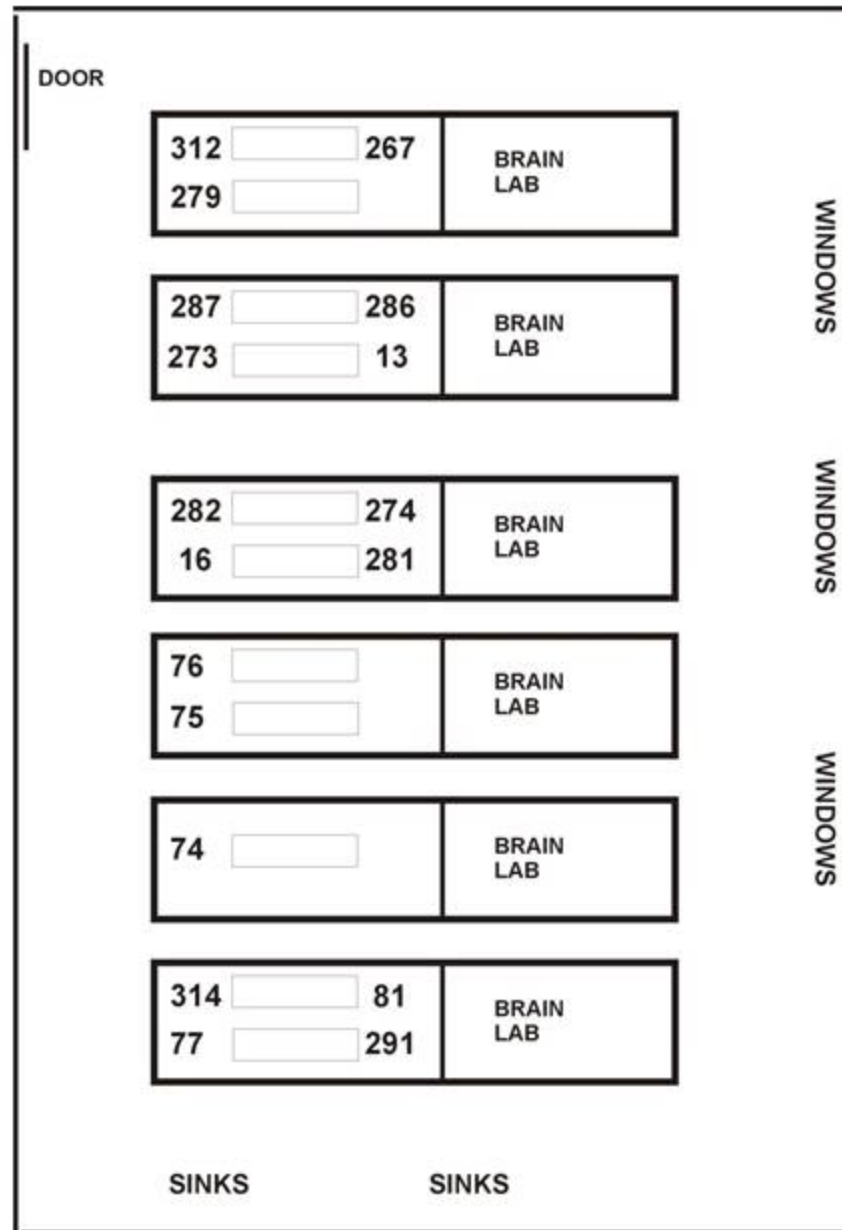


HEAD AND NECK PROSECTIONS 2022

Updated 021522

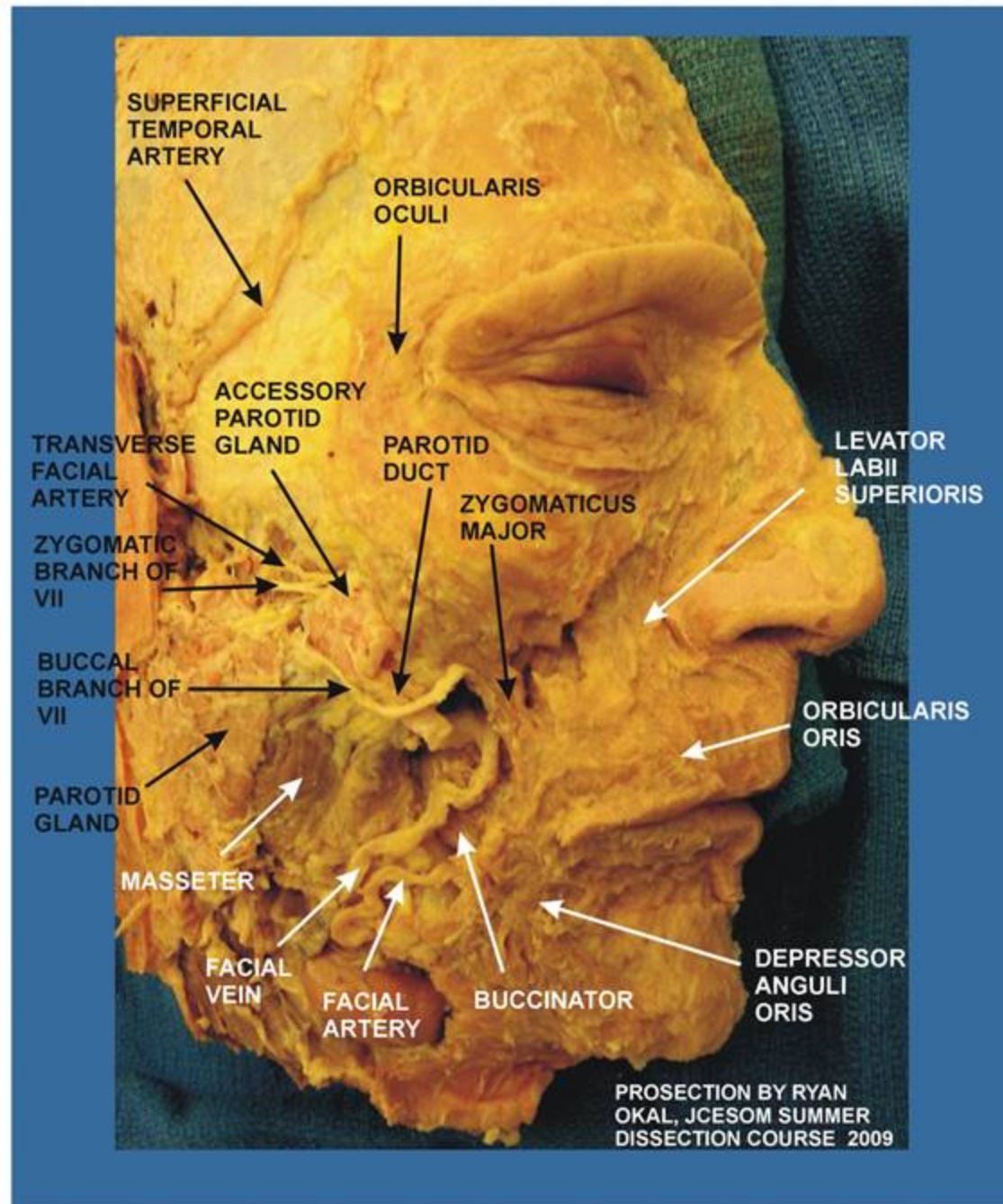
REVISED MAP OF LOCATION OF PROSECTIONS IN HISTOLOGY AREA 2022



FACIAL MUSCLES

312

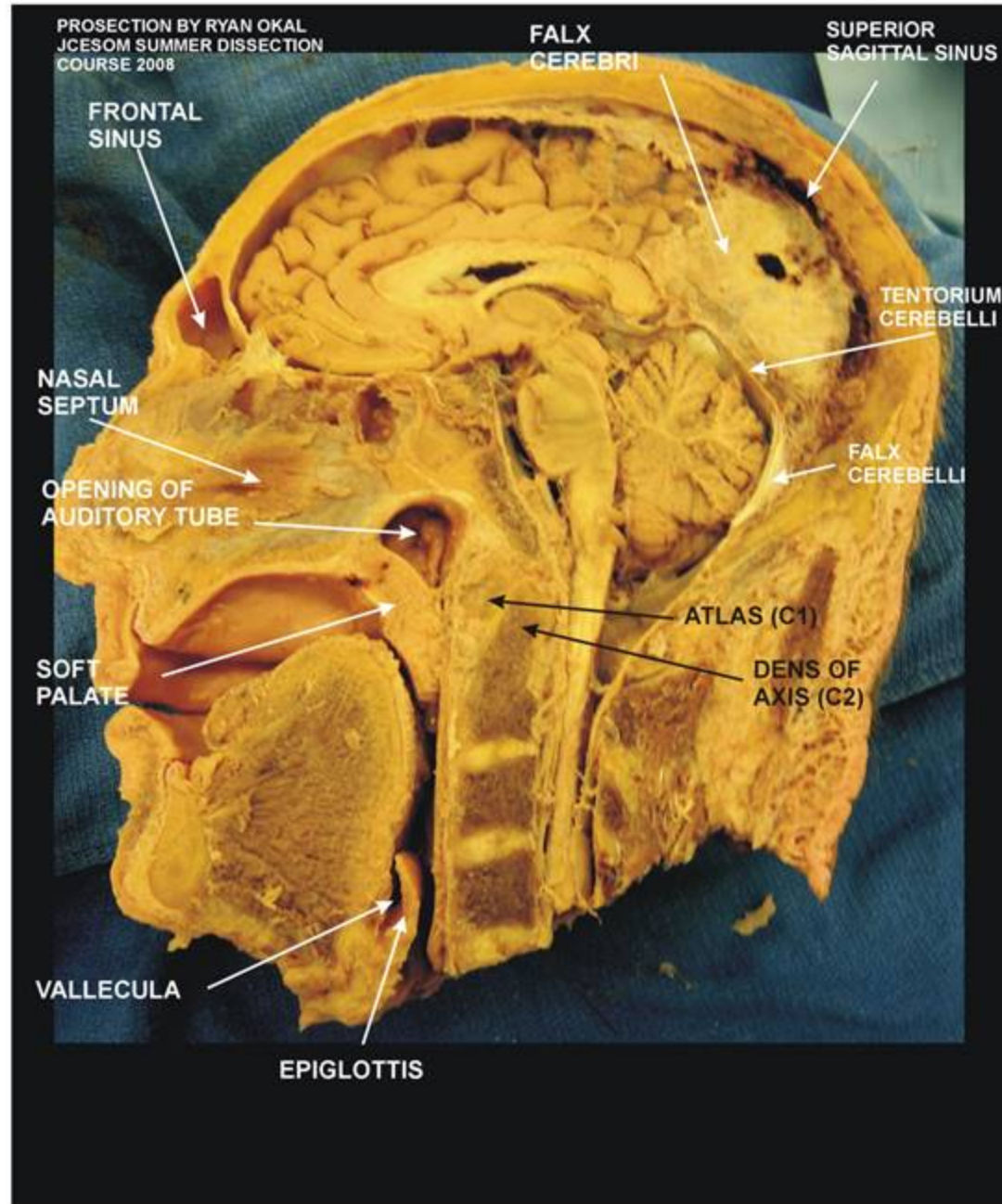
312



MEDIAL VIEW OF BISECTED HEAD

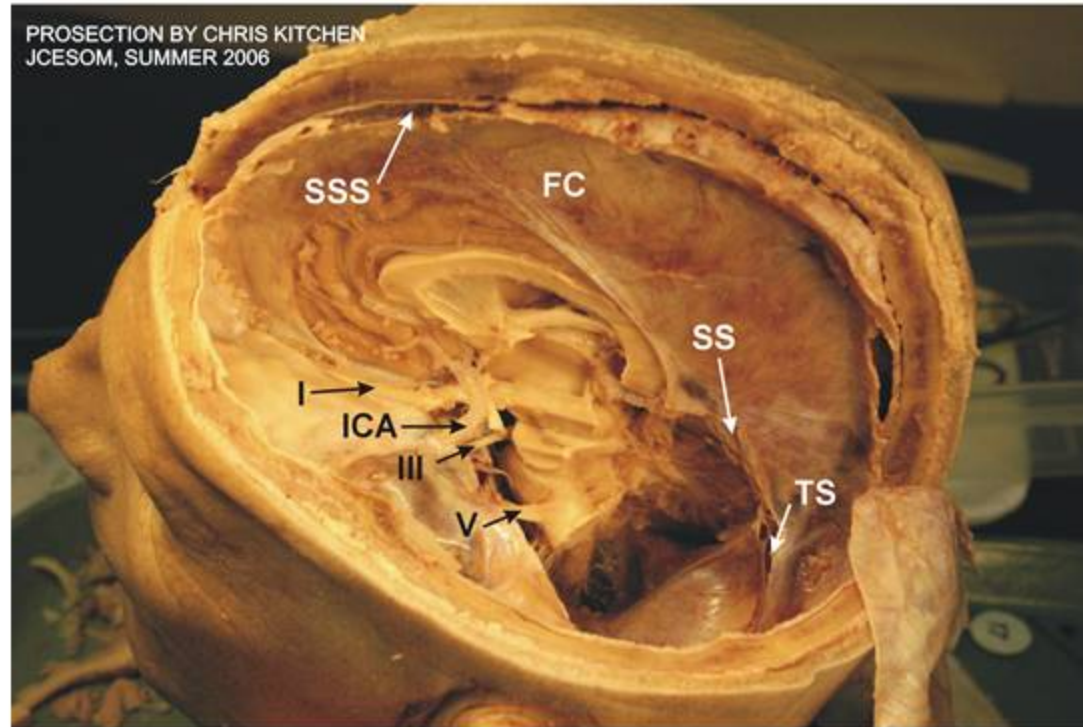
312

312



BRAIN (HEMISECTED) IN CRANIAL CAVITY

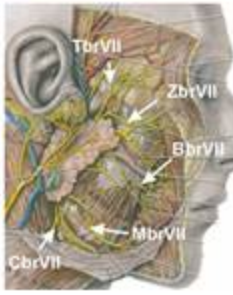
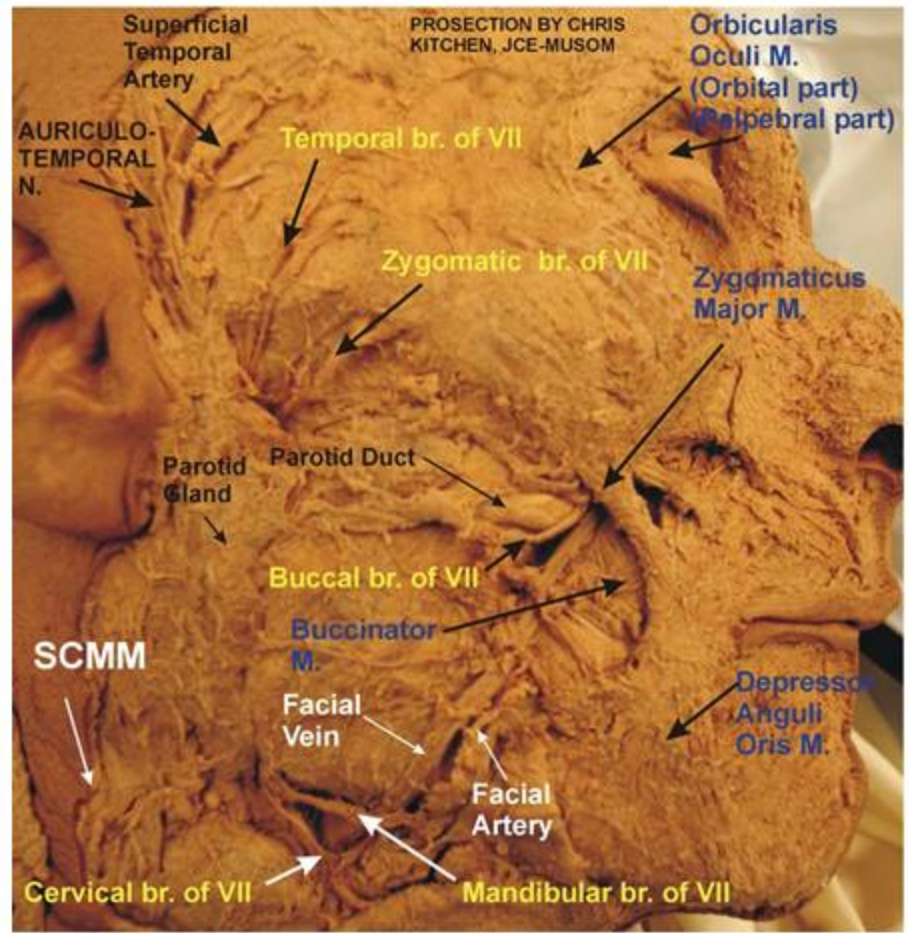
267



- I - OLFACTORY TRACT
- ICA - INTERNAL CAROTID ARTERY
- III - OCULOMOTOR NERVE
- V - TRIGEMINAL NERVE
- SSS - SUPERIOR SAGITTAL SINUS
- FC - FALX CEREBRI
- SS - STRAIGHT SINUS
- TS - TRANSVERSE SINUS

BRANCHES OF FACIAL NERVE (VII) AND SUPERFICIAL FACE

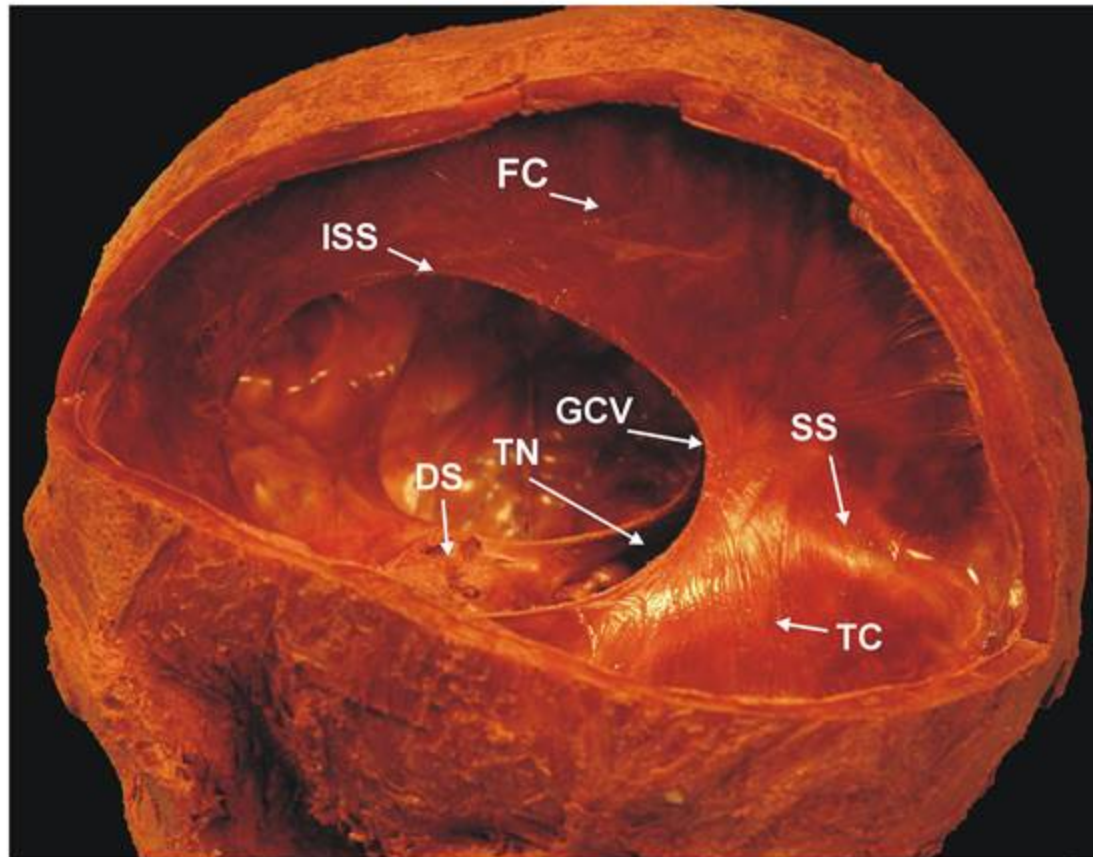
267



- Superficial Temporal Atery
- Auriculotemporal Nerve
- TbrVII - Temporal branch of VII
- ZbrVII - Zygomatic branch of VII
- BbrVII - Buccal branch of VII
- MbrVII - Mandibular branch of VII
- CbrVII - Cervical branch of VII
- Orbicularis oculi (orbital part)
- Zygomaticus major
- Levator Labi Superioris
- Depressor Anguli Oris
- Buccinator Muscle
- Facial Vein
- Facial Artery
- Parotid Gland
- Parotid Duct
- Sternocleidomastoid M.

DURAL REFLECTIONS AND VENOUS SINUSES

279



FC - FALX CEREBRI

TC - TENTORIUM CEREBELLI

ISS - LOCATION OF INFERIOR SAGITTAL SINUS

SS - LOCATION OF STRAIGHT SINUS

GCV - OPENING OF GREAT CEREBRAL VEIN OF GALEN

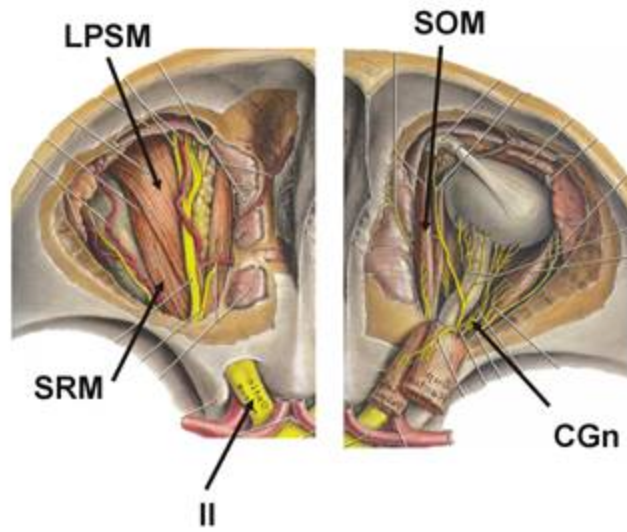
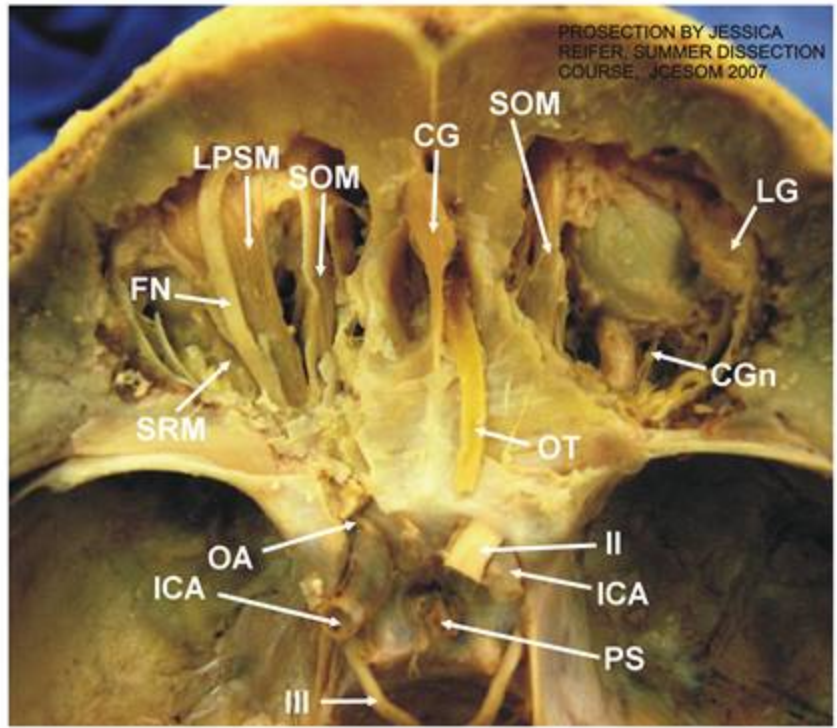
DS - DIAPHRAGMA SELLA

TN - TENTORIAL NOTCH

ORBIT: SUPERFICIAL AND DEEP DISSECTIONS

287

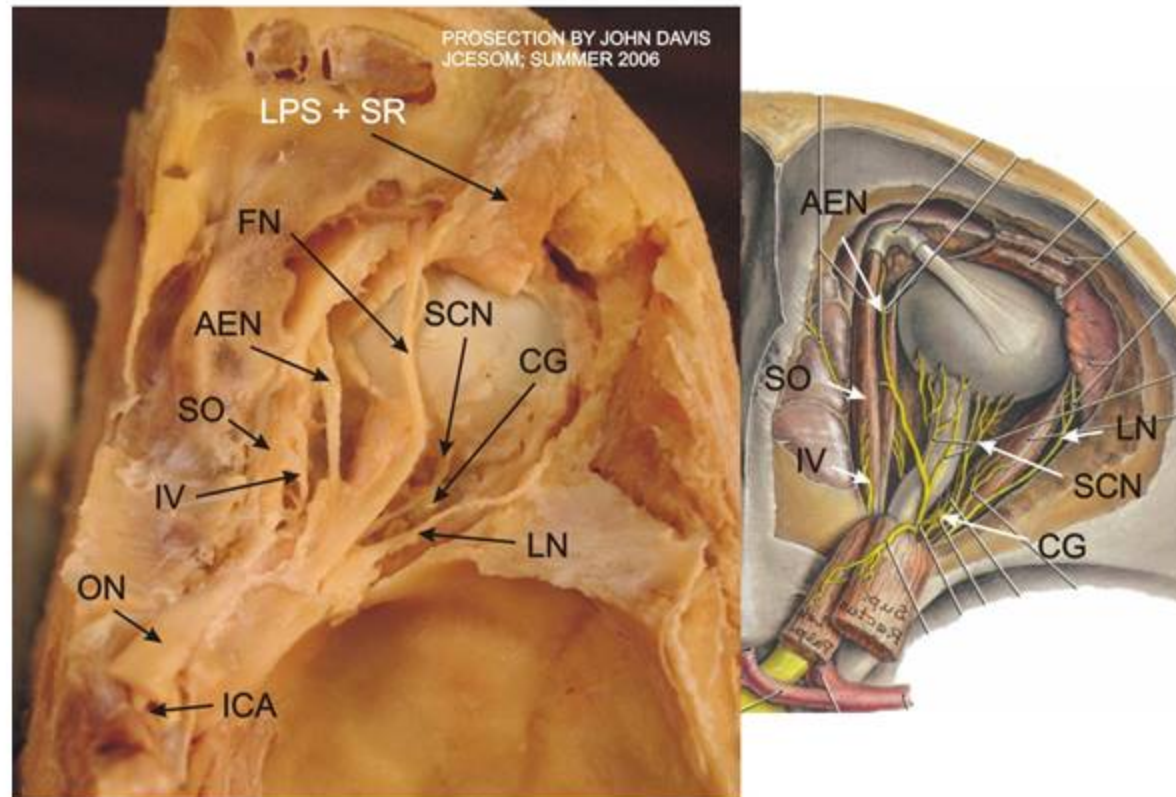
287



- ICA - INTERNAL CAROTID ARTERY
- III - OCULOMOTOR NERVE
- PS - PITUITARY STALK
- II - OPTIC NERVE
- OT - OLAFACTORY TRACT
- CGn - CILIARY GANGLION
- LG - LACRIMAL GLAND
- CG - CRISTA GALLI
- SOM - SUPERIOR OBLIQUE MUSCLE
- LPSM - LEVATOR PALPEBRAE SUPERIORIS M.
- FN - FRONTAL NERVE
- SRM - SUPERIOR RECTUS MUSCLE
- OA - OPHTHALMIC ARTERY

PROSECTION OF ORBIT - Deep Dissection

273



LPS + SR - LEVATOR PALPEBRAE SUPERIORIS
AND SUPERIOR RECTUS MUSCLES REFLECTED

IV - TROCHLEAR NERVE

SO - SUPERIOR OBLIQUE MUSCLE

AEN - ANTERIOR ETHMOIDAL NERVE

FN - FRONTAL NERVE

CG - CILIARY GANGLION

SCN - SHORT CILIARY NERVES

LN - LACRIMAL NERVE

ON - OPTIC NERVE

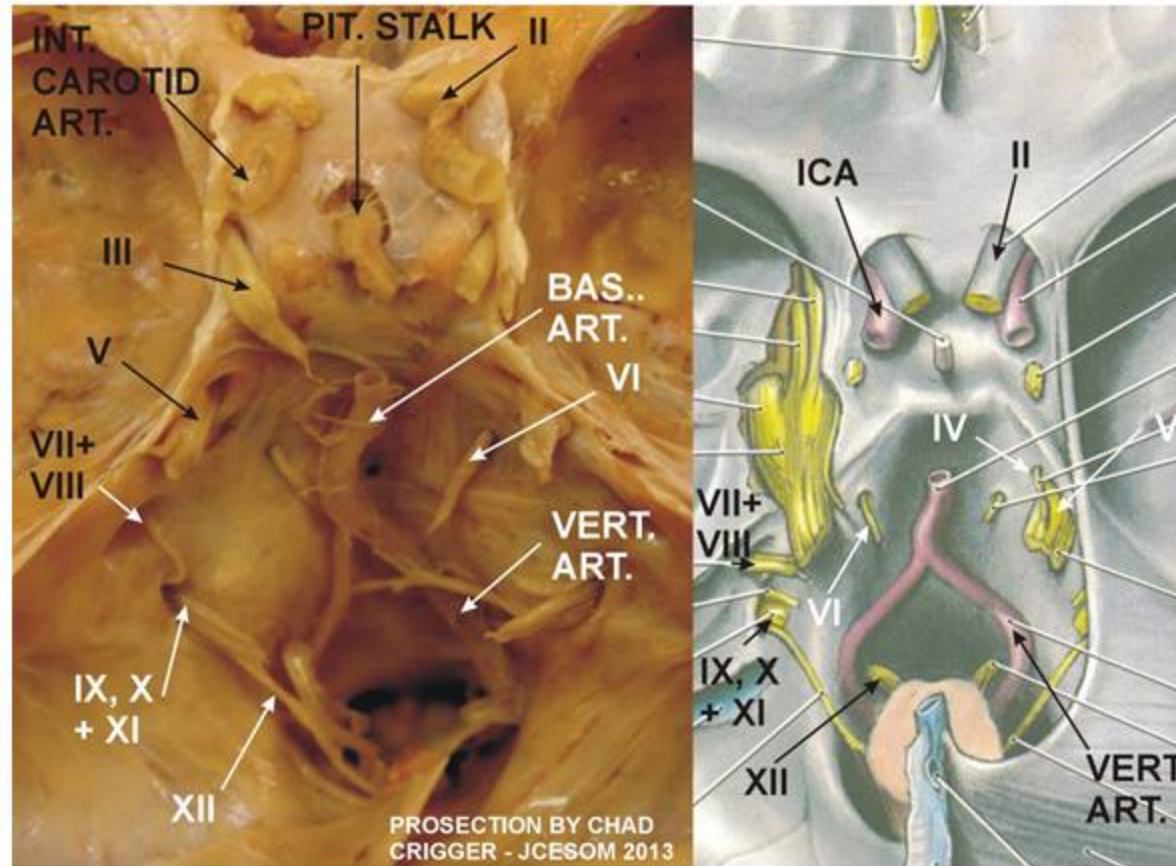
ICA - INTERNAL CAROTID ARTERY

NOTE:
MANY STRUCTURES
DESSICATED
BUT INTACT
CILIARY GANGLION

CRANIAL NERVES

13

13



VERT. ART. - Vertebral Artery
VII - Facial Nerve
VIII - Vestibulocochlear Nerve
IX - Glossopharyngeal Nerve
X - Vagus
XI - Accessory
XII - Hypoglossal

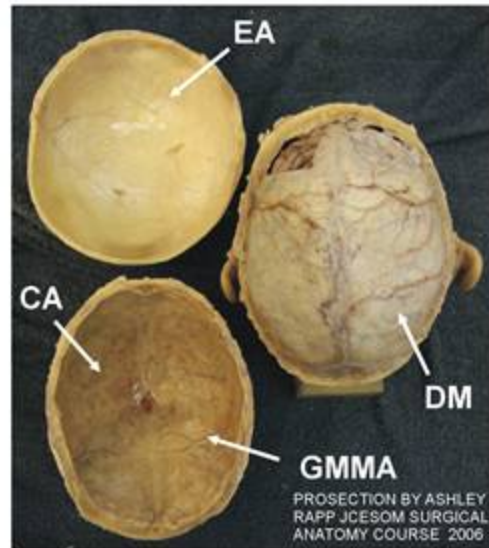
INT. CAROTID ART. - Internal Carotid Artery
BAS. ART. - Basilar Artery
II - Optic Nerve
V - Trigeminal
VI - Abducens

SCALP, CALVARIUM AND DURA MATER

282

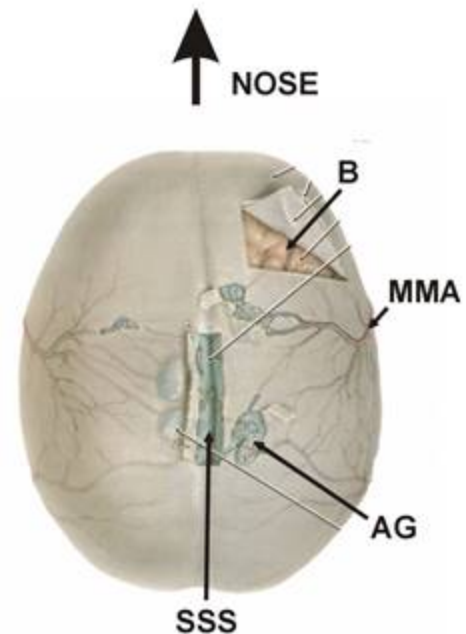
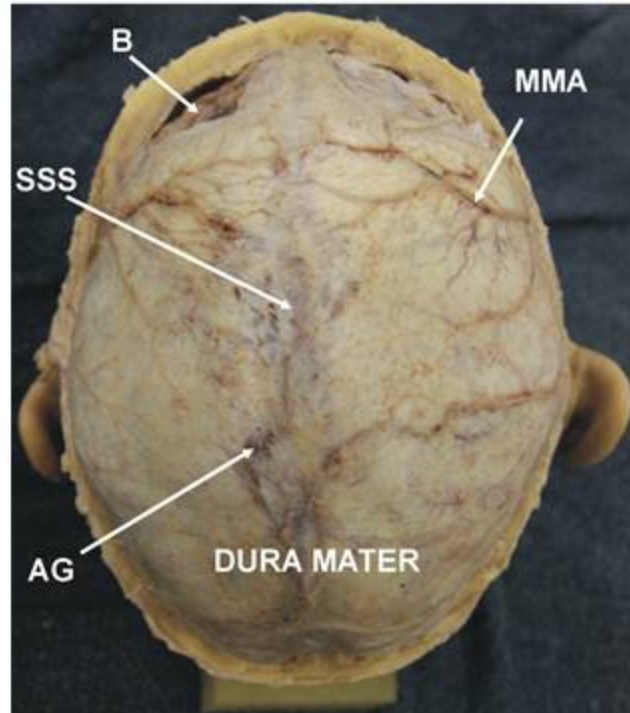
INNER SIDE OF CALVARIUM AND SCALP

282



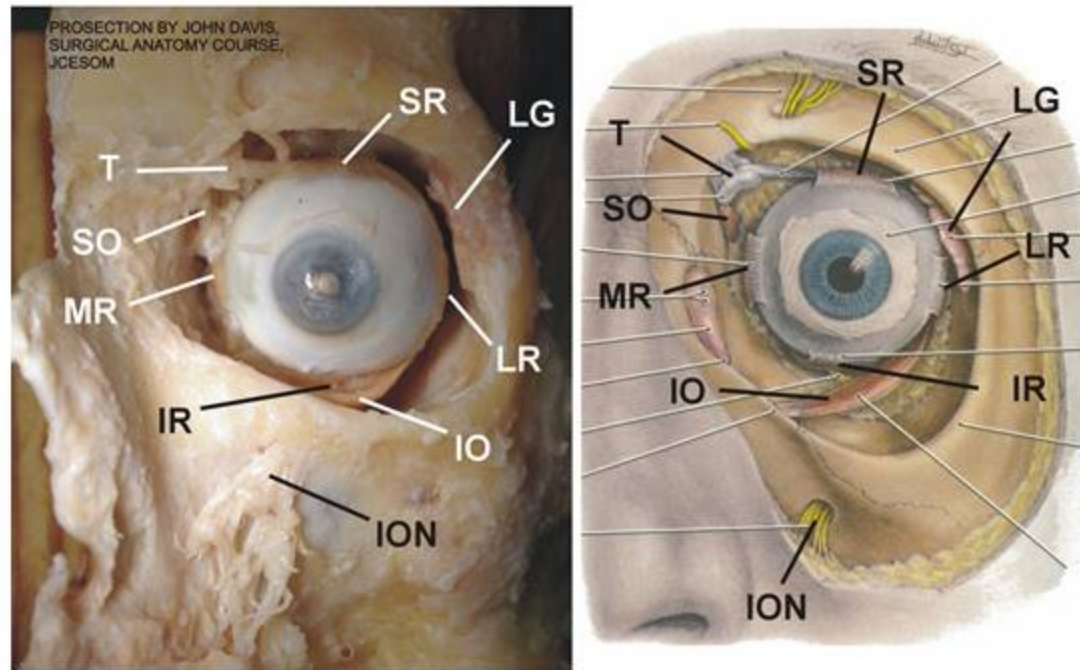
EA - EPICRANIAL APONEUROSIS
(ON INNER SIDE OF SCALP)
CA - CALVARIUM WITH DURA MATER
REMOVED
GMMA - GROOVE FOR MIDDLE
MENINGEAL ARTERY
DM - DURA MATER
B - BRAIN
SSS - SUPERIOR SAGITAL SINUS
AG - ARACHNOID GRANULATION
MMA - MIDDLE MENINGEAL ARTERY

DURA MATER AT HIGH MAG



PROSECTION OF ORBIT - ANTERIOR VIEW

274



- SO - Superior oblique muscle
- T - Trochlea (pulley for SO tendon)
- SR - Superior rectus muscle (insertion)
- LR - Lateral rectus muscle (insertion)
- IR - Inferior rectus muscle (insertion)
- IO - Inferior oblique muscle
- MR - Medial rectus muscle (insertion)
- LG - Lacrimal Gland
- ION - Infraorbital nerve (V2)

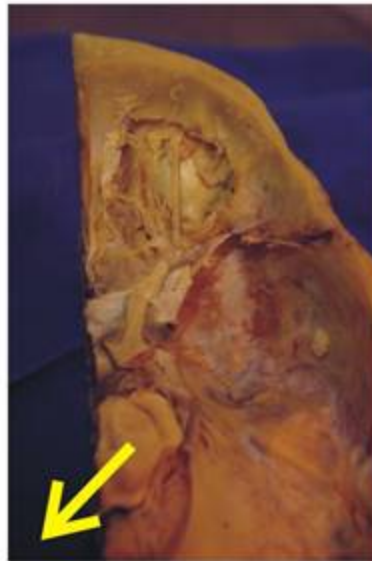
Note: tilt prosection or gently move eye to see rectus muscles

ORBIT: DEEP VIEW AND TROCHLEAR NERVE

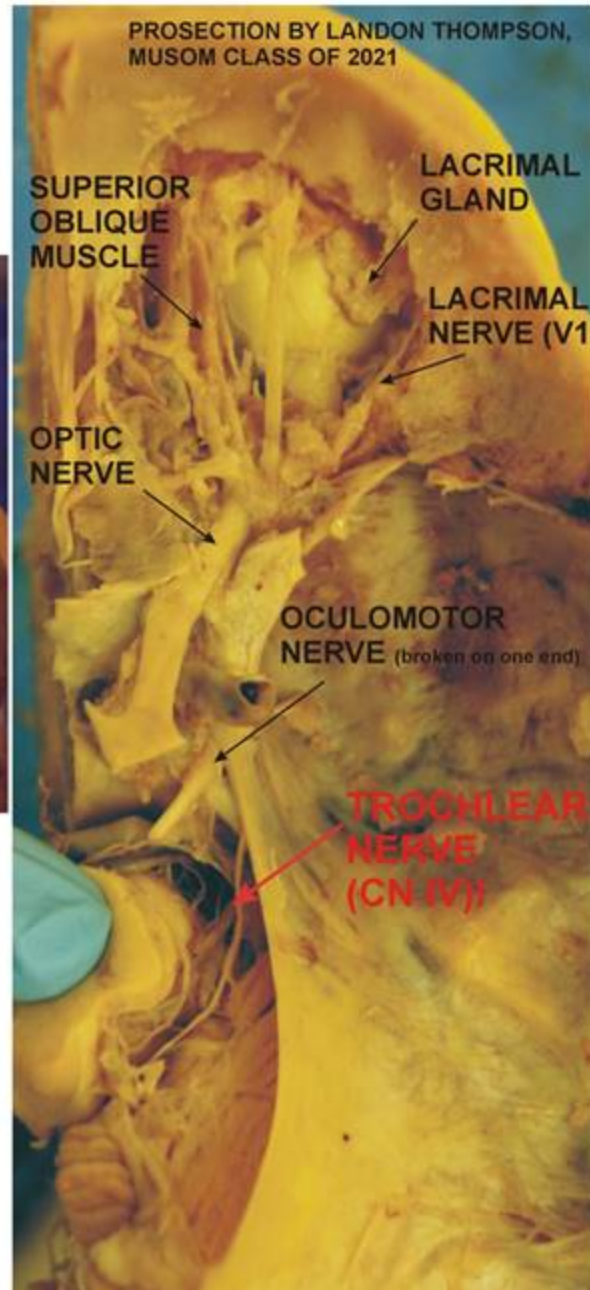
74

74

PLEASE NOTE:
THIS IS A VERY
FRAGILE
PROSECTION!



EVER SO GENTLY
DISPLACE
THE BRAIN STEM
(SLIGHTLY) TO
SEE THE
COURSE OF
THE TROCHLEAR
NERVE



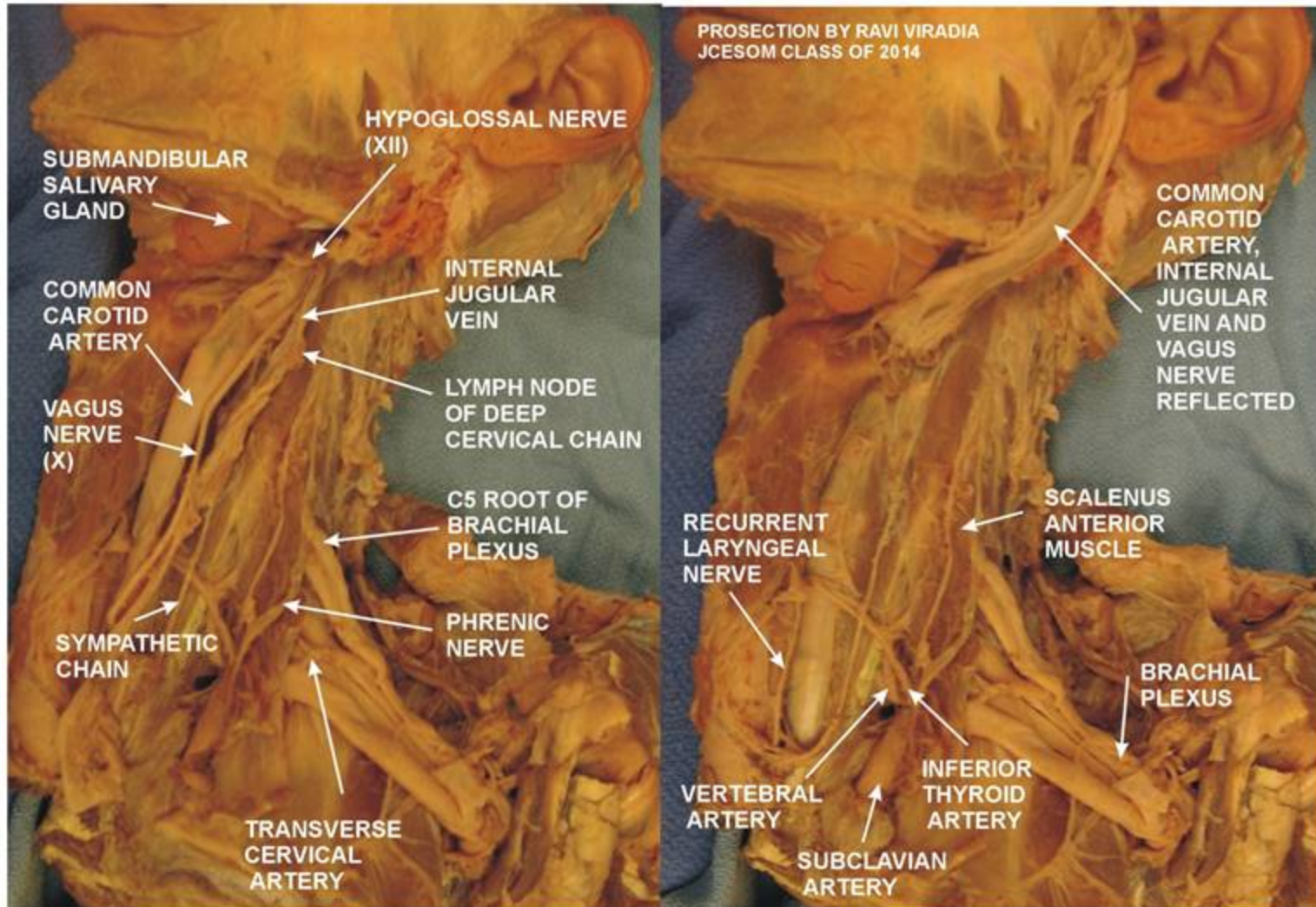
SUPERFICIAL AND DEEP NECK

SUPERFICIAL VIEW

DEEP VIEW

16

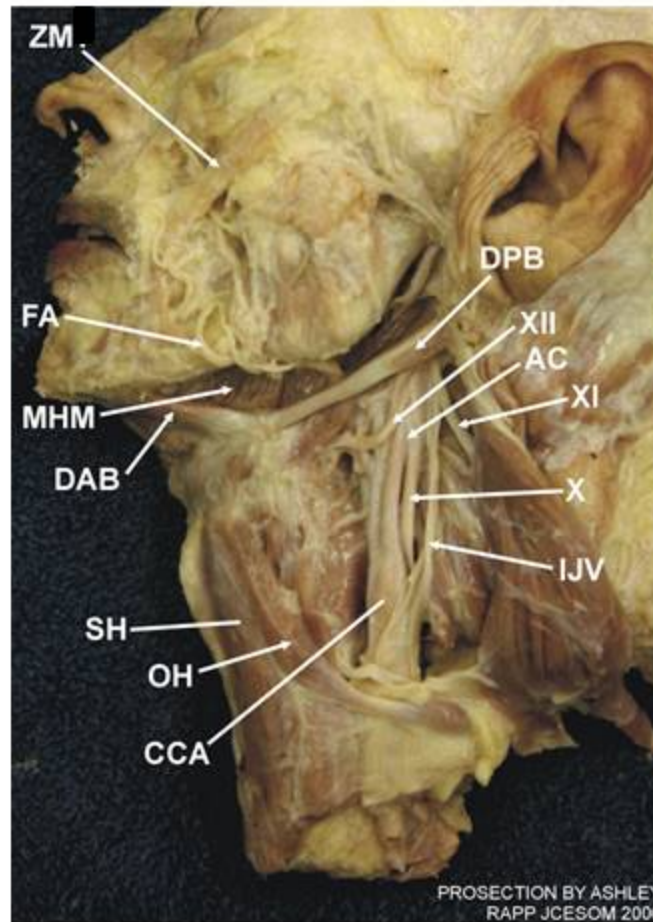
16



ANTERIOR NECK: ACCESSORY NERVE

281

281



FA - FACIAL ARTERY
 MHM - MYLOHYOID MUSCLE
 DAB - DIGASTRIC ANTERIOR BELLY
 DPB - DIGASTRIC POSTERIOR BELLY
 SH - STERNOHYOID
 OH - OMOHYOID
 CCA - COMMON CAROTID ARTERY

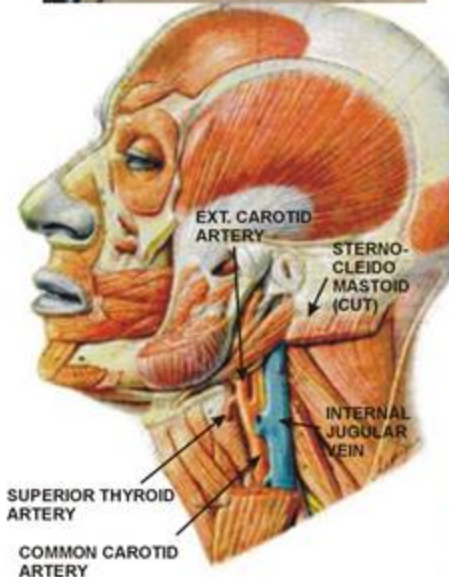
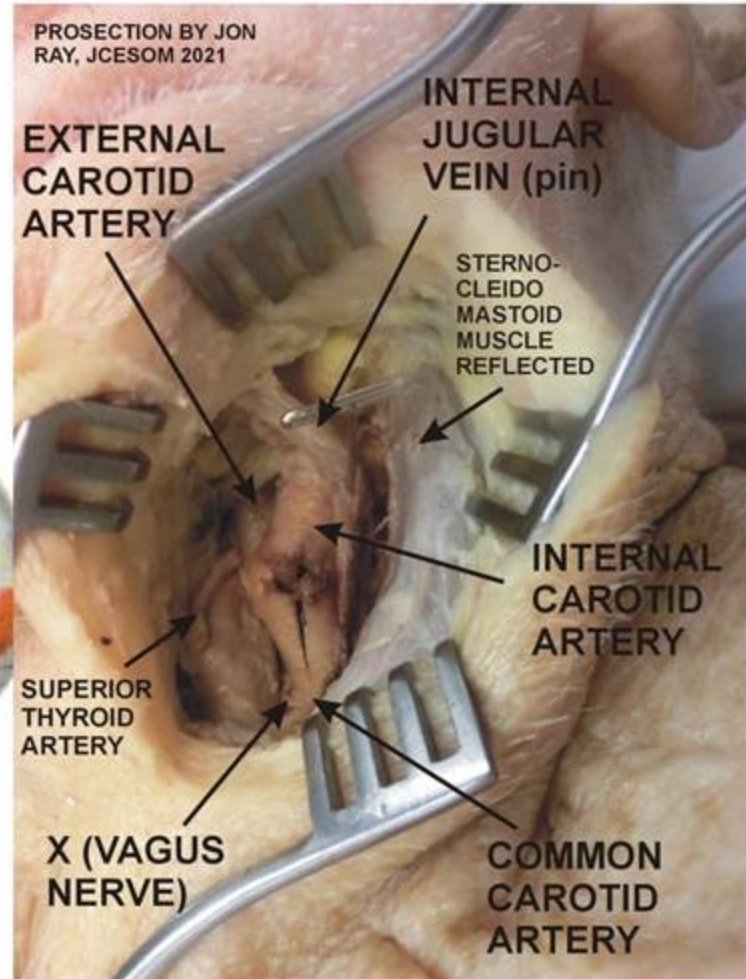
XII - HYPOGLOSSAL NERVE
 AC - ANSA CERVICALIS
 XI - ACCESSORY NERVE
 X - VAGUS NERVE
 IJV - INTERNAL JUGULAR VEIN
 ZM - ZYGOMATICUS MAJOR

SURGICAL PROSECTION: CAROTID ENDARTERECTOMY

SKIN INCISION ANTERIOR TO STERNOCLEIDOMASTOID MUSCLE



CAROTID SHEATH INCISED TO EXPOSE CONTENTS; ARTERY INCISED FOR PLAQUE REMOVAL

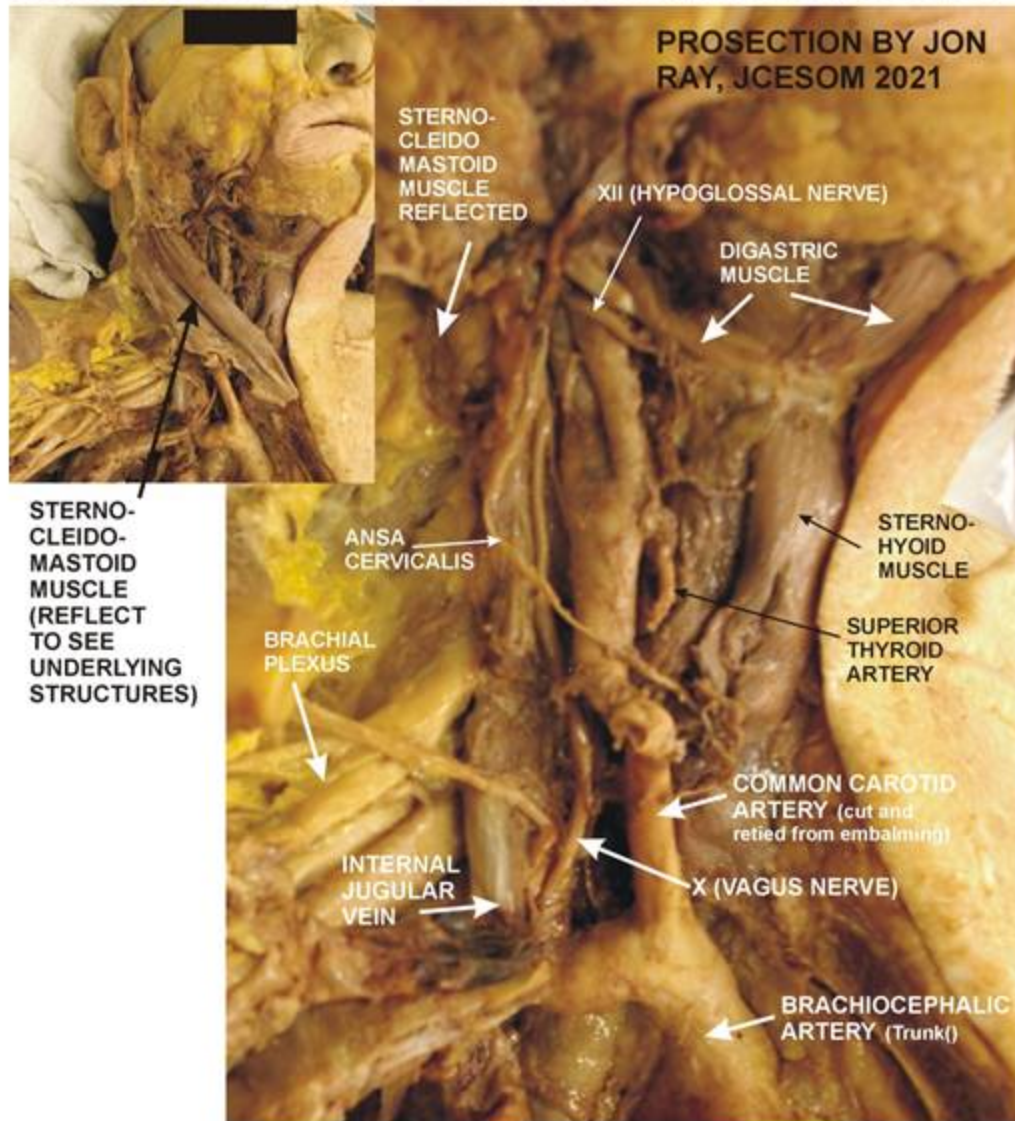


DISSECTION OF ANTERIOR NECK

76

76

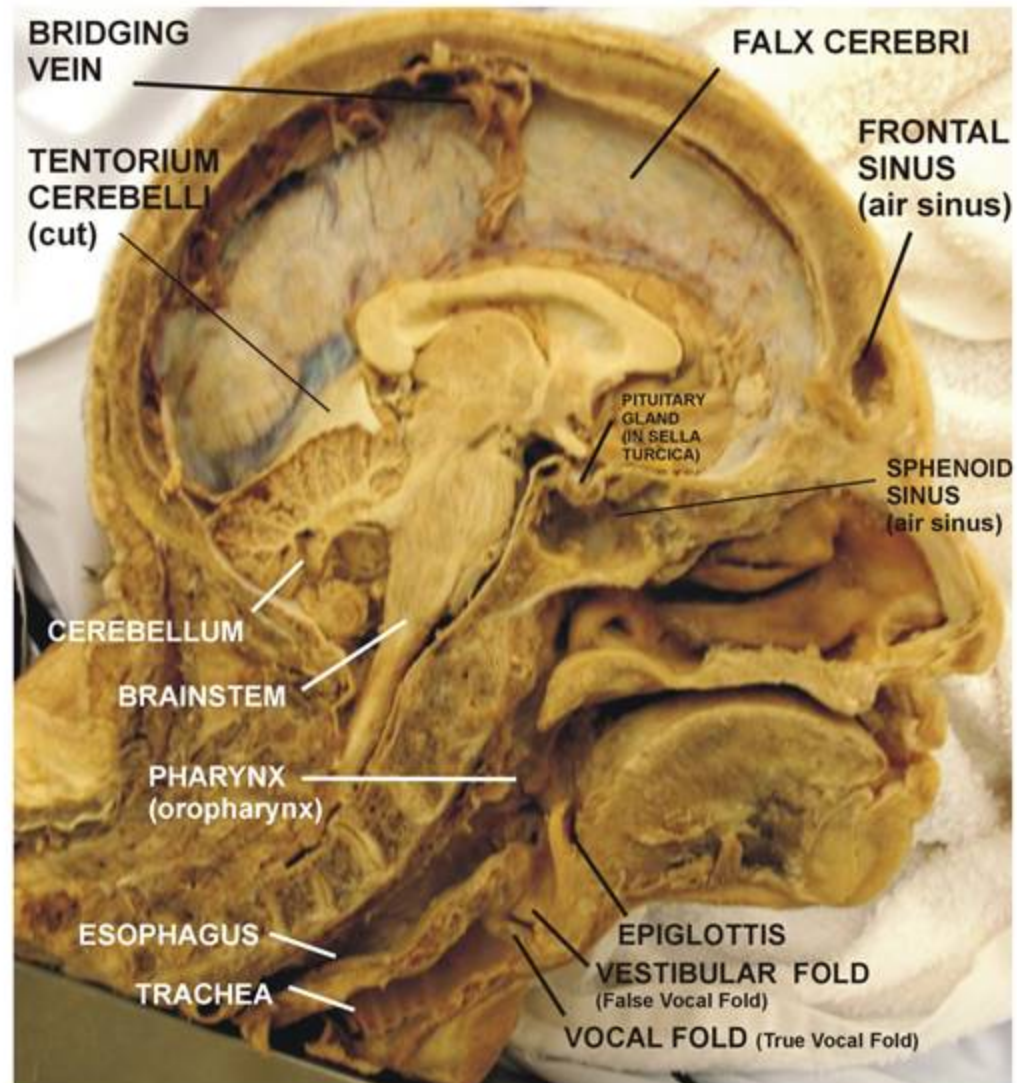
NECK DISSECTED ON RIGHT SIDE OF SURGICAL ANATOMY PROSECTION



BISECTED HEAD WITH INTACT FALX CEREBRI

75

75

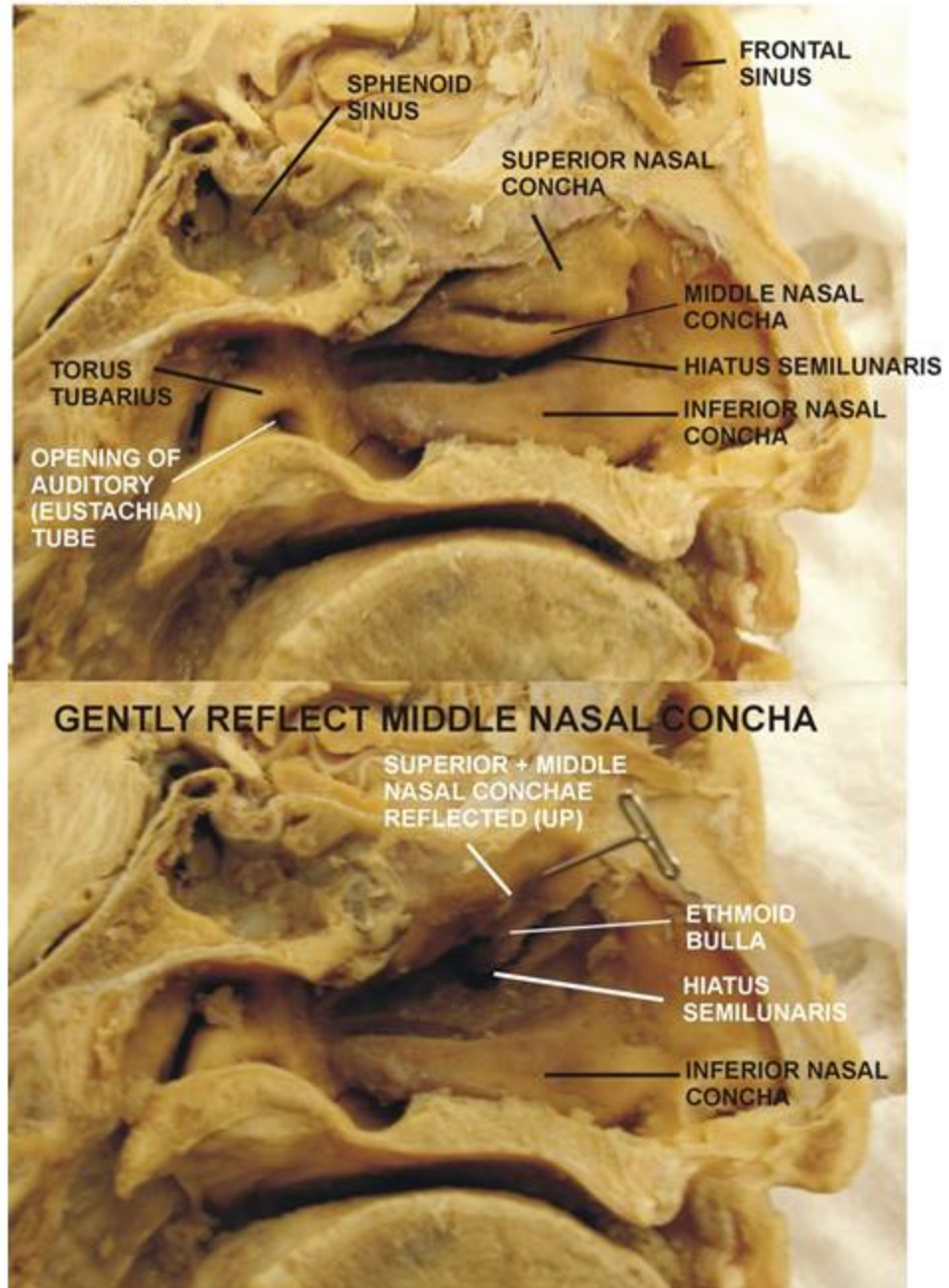


Note: Bridging Vein - cut when brain removed but still attached and entering Sup. Sagittal Sinus

BISECTED HEAD: NASAL CAVITY

75

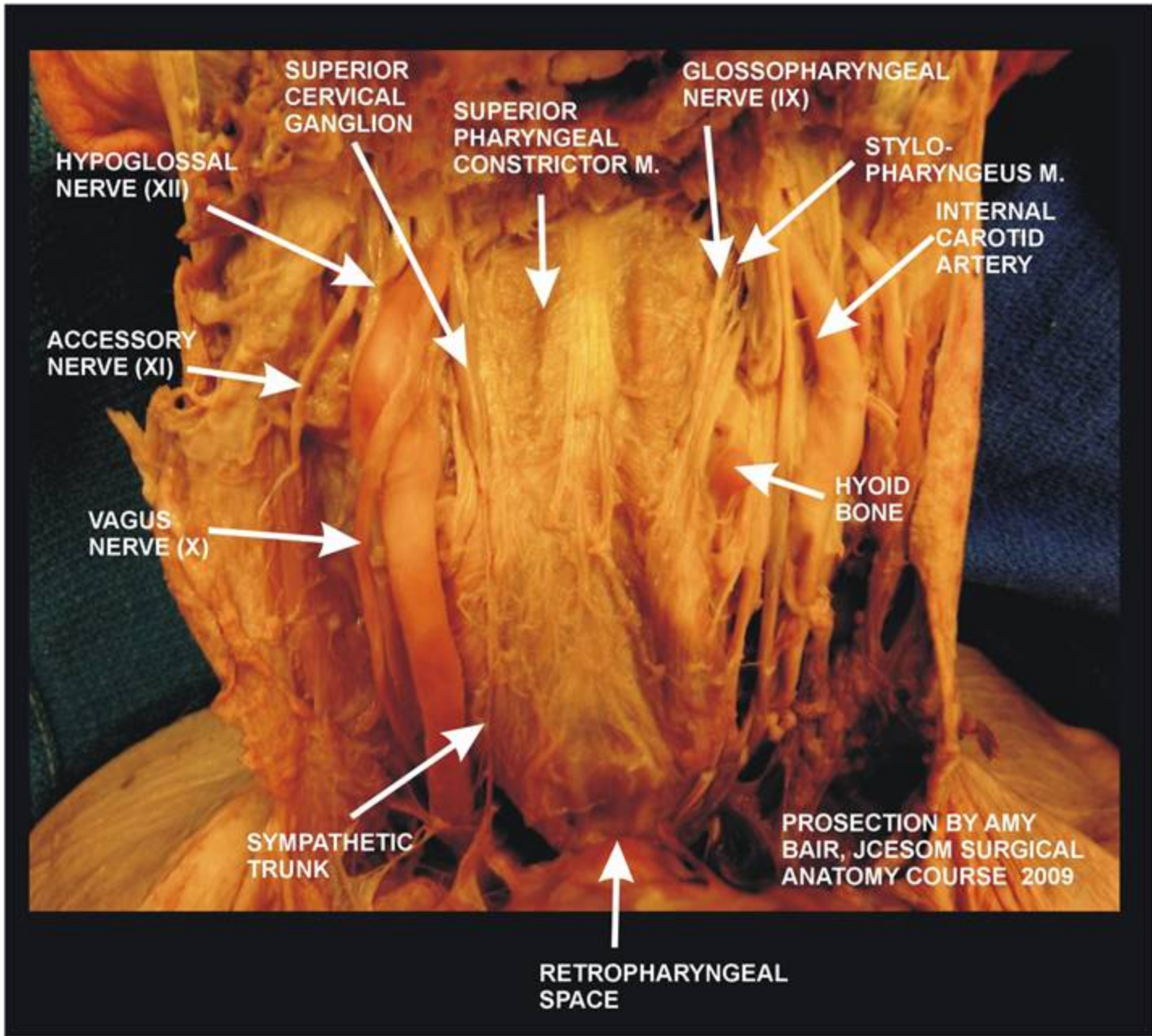
75



POSTERIOR PHARYNX AND RETROPHARYNGEAL SPACE

314

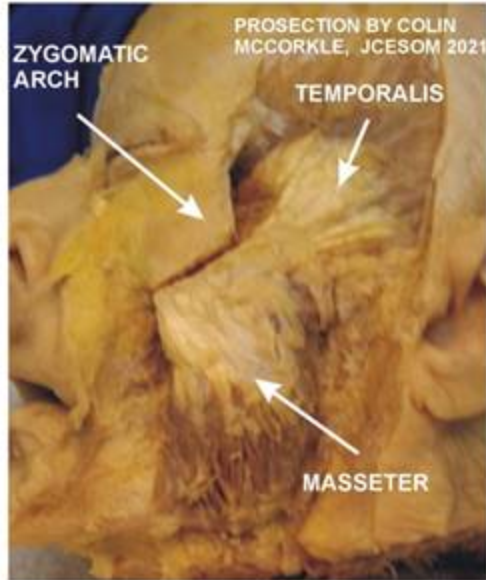
314



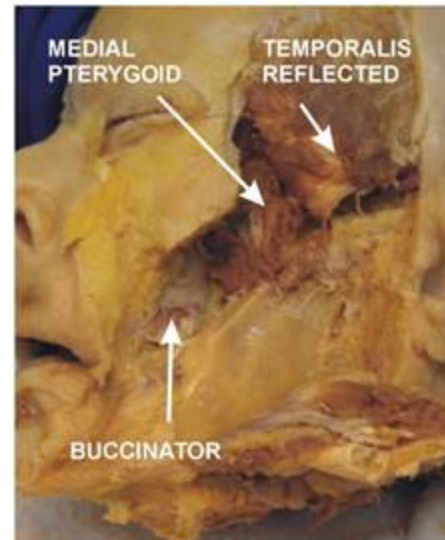
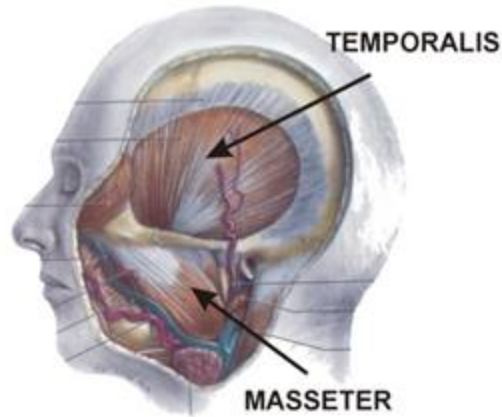
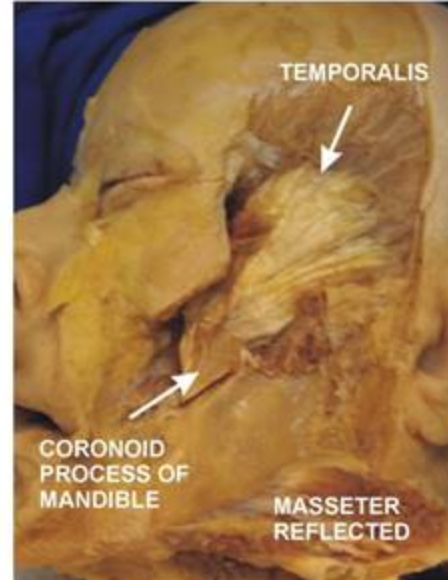
MUSCLES OF MASTICATION

81

81



CAREFULLY REFLECT ZYGOMATIC ARCH AND MASSETER MUSCLE

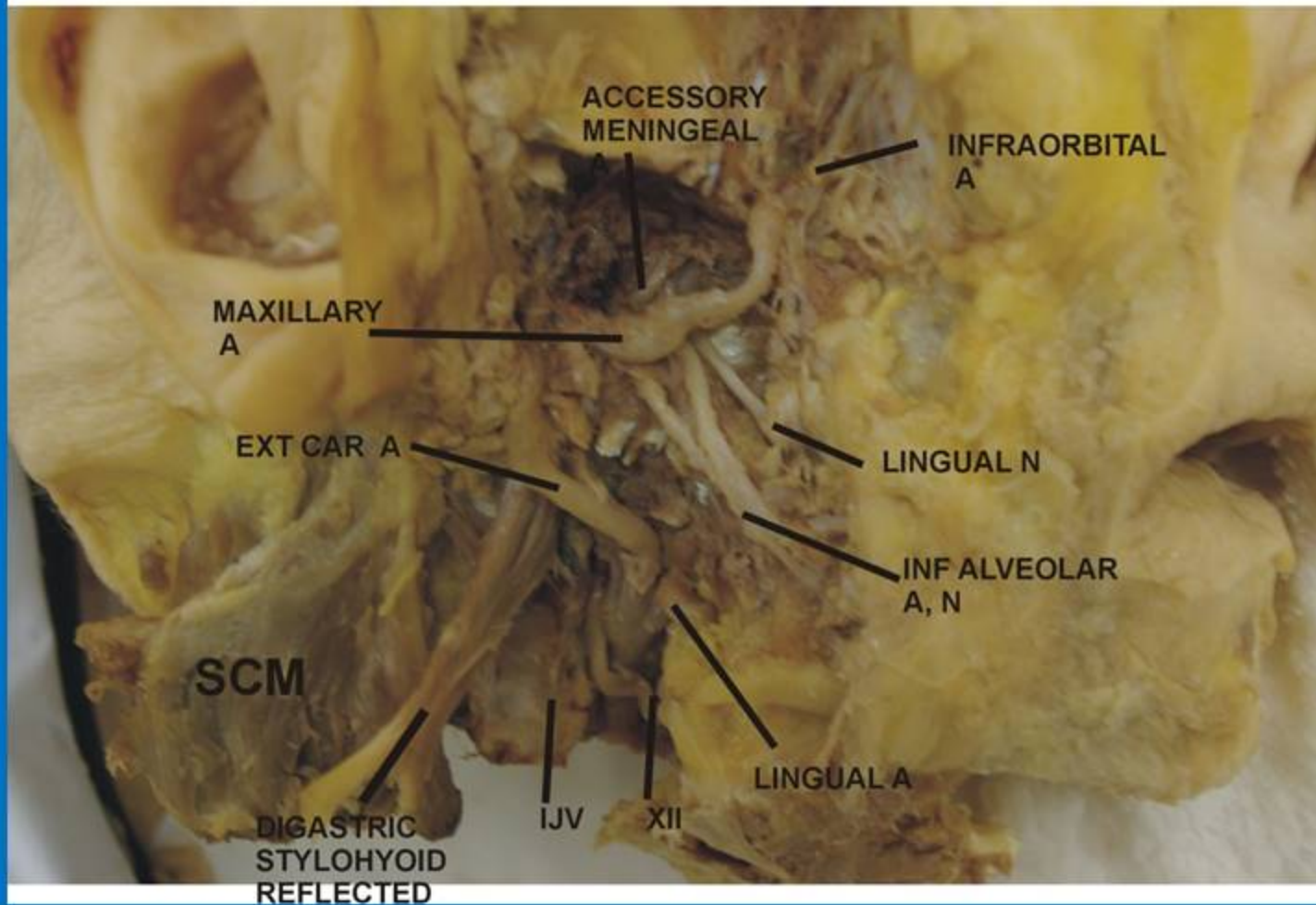


INFRATEMPORAL FOSSA PROSECTION

81

Colin McCorkle, 2021

81



BRAINSTEM IN CRANIAL CAVITY

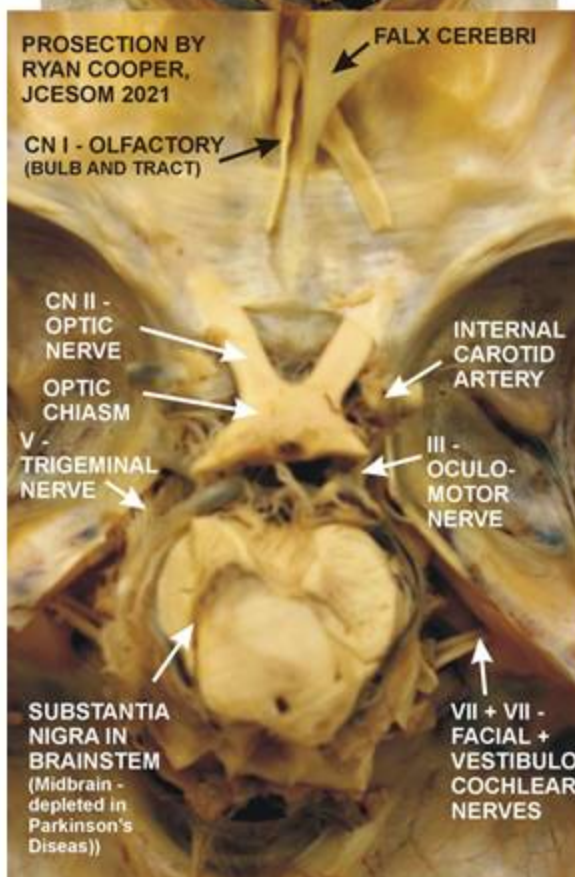
77

77

77 Ryan
Cranial Nerves



ORIENT: CALVARIUM,
BRAIN REMOVED;
BRAINSTEM,
EXPOSED IN
CRANIAL CAVITY

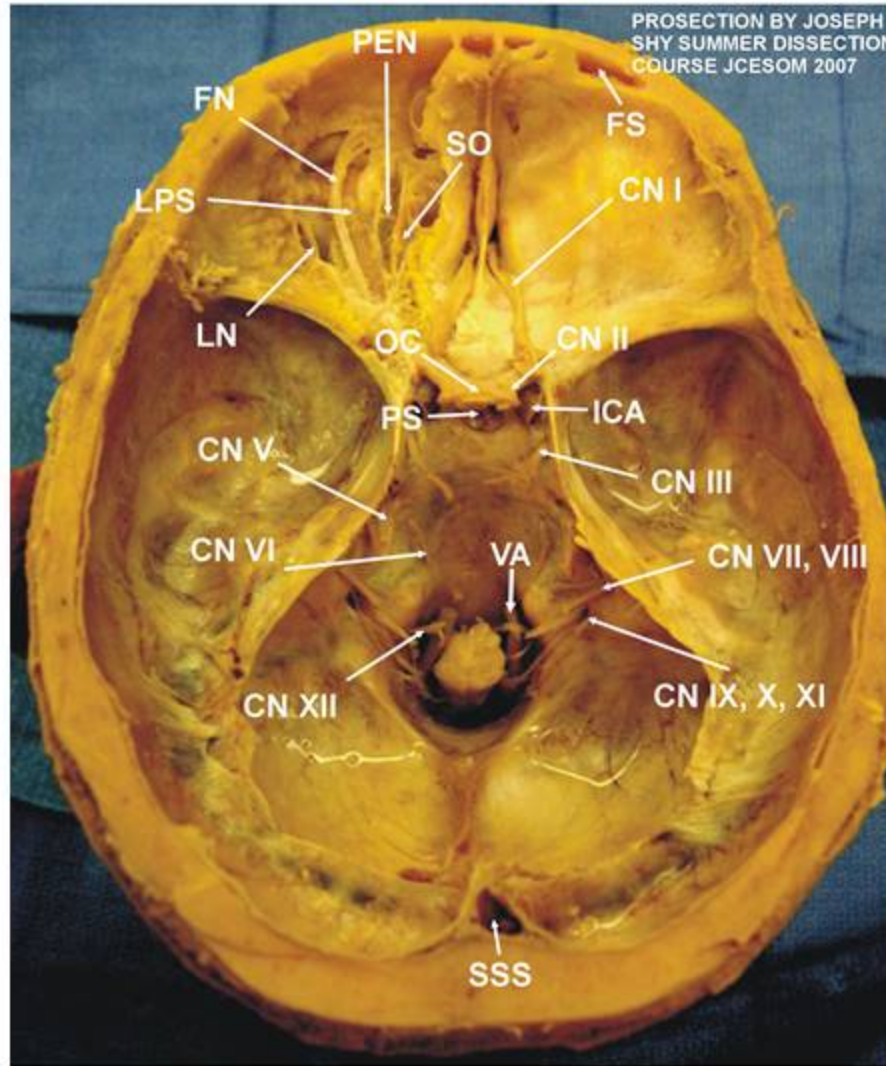


NOTE:
PLEASE
TREAT
THIS
PROSECTION
GENTLY;
DO NOT
PULL ON
BRAINSTEM

CRANIAL NERVES AND SUPERFICIAL ORBIT

286

286



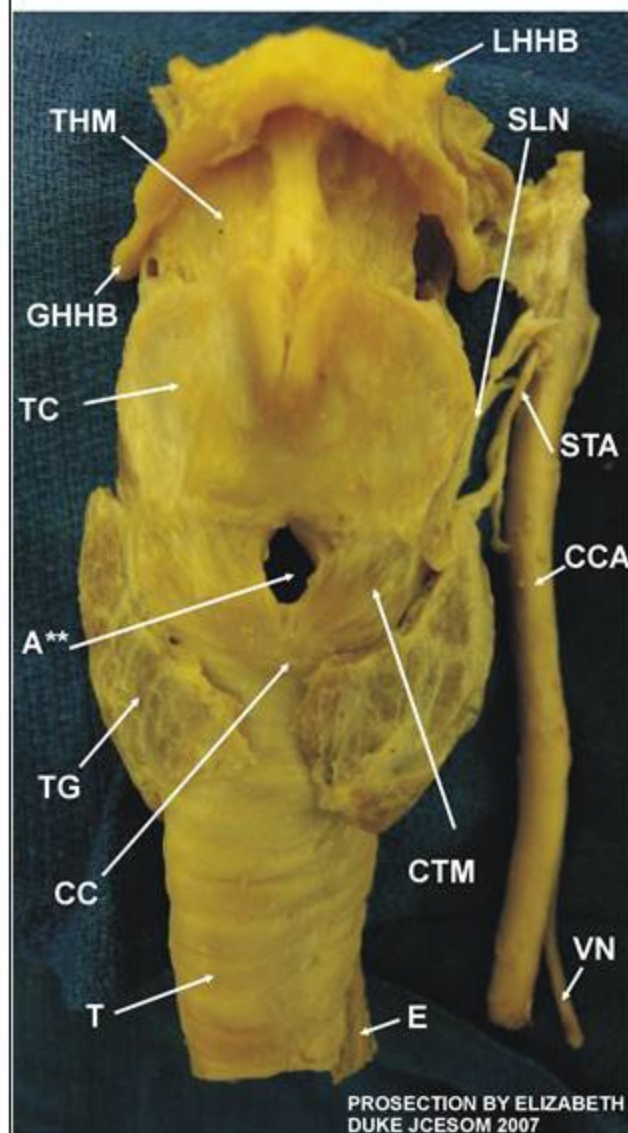
SSS - SUPERIOR SAGITTAL SINUS
 CN XII - HYPOGLOSSAL NERVE
 CN IX, X, XI - CRANIAL NERVES 9, 10, 11
 CN VII, VIII - FACIAL, VESTIBULO-COCHLEAR NERVES
 VA - VERTEBRAL ARTERY
 FS - FRONTAL SINUS
 FN - FRONTAL NERVE
 LPS - LEVATOR PALPEBRAE SUPERIORIS MUSCLE
 LN - LACRIMAL NERVE

PS - PITUITARY STALK
 ICA - INTERNAL CAROTID ARTERY
 CN II - OPTIC NERVE
 OC - OPTIC CHIASM
 CN I - OLFACTORY NERVE
 SO - SUPERIOR OBLIQUE MUSCLE
 PEN - POSTERIOR ETHMOIDAL NERVE
 CN III - OCULOMOTOR NERVE
 CN V - TRIGEMINAL NERVE
 CN VI - ABDUCENS NERVE

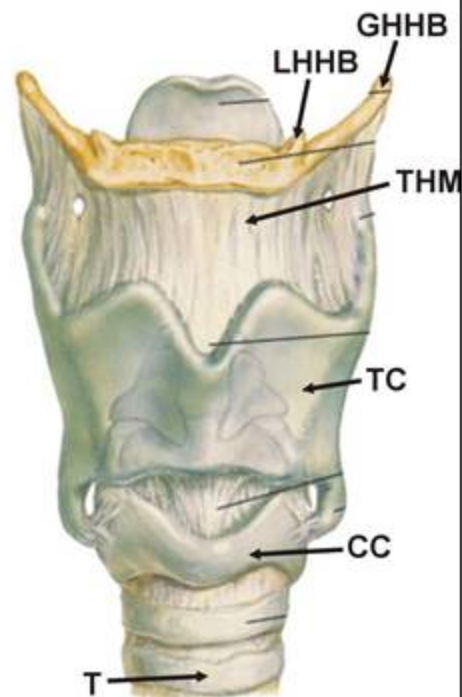
LARYNX: ANTERIOR VIEW

291

291



PROSECTIONS BY ELIZABETH
DUKE JCESOM 2007



NOTE: A** - AIRWAY IS CUT IN
CRICOTHYROID MEMBRANE IN
CRICOTHYROTOMY; THIS
EMERGENCY PROCEDURE
AVOIDS BLEEDING THAT CAN
OCCUR IN TRACHEOTOMY

THM - THYROID MEMBRANE
GHHB - GREATER HORN OF HYOID BONE
LHHB - LESSER HORN OF HYOID BONE
STA - SUPERIOR THYROID ARTERY
TC - THYROID CARTILAGE
SLN - SUPERIOR LARYNGEAL NERVE
CTM - CRICOTHYROID MUSCLE

CC - CRICOID CARTILAGE
CCA - COMMON CAROTID ARTERY
TG - THYROID GLAND
T - TRACHEA
E - ESOPHAGUS
VN - VAGUS NERVE