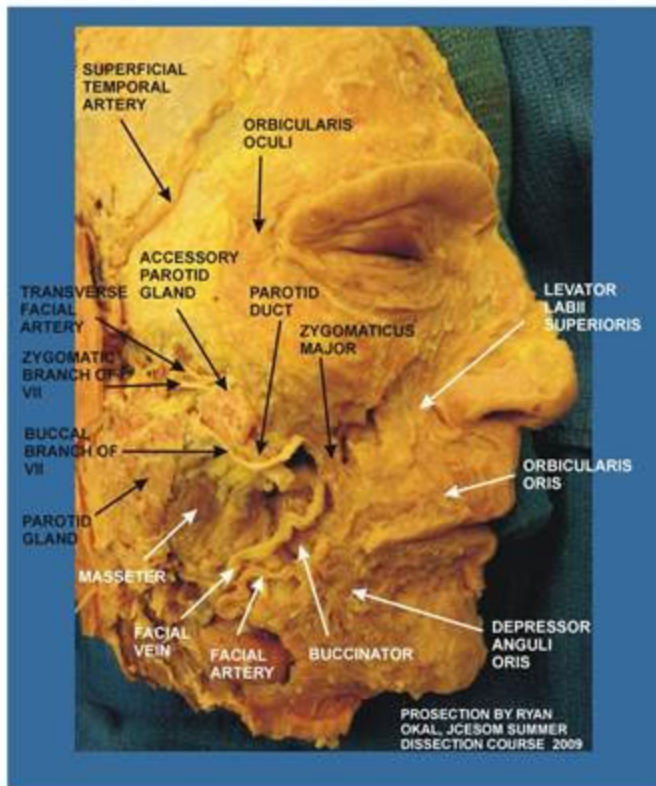


HEAD AND NECK PROSECTIONS 2024

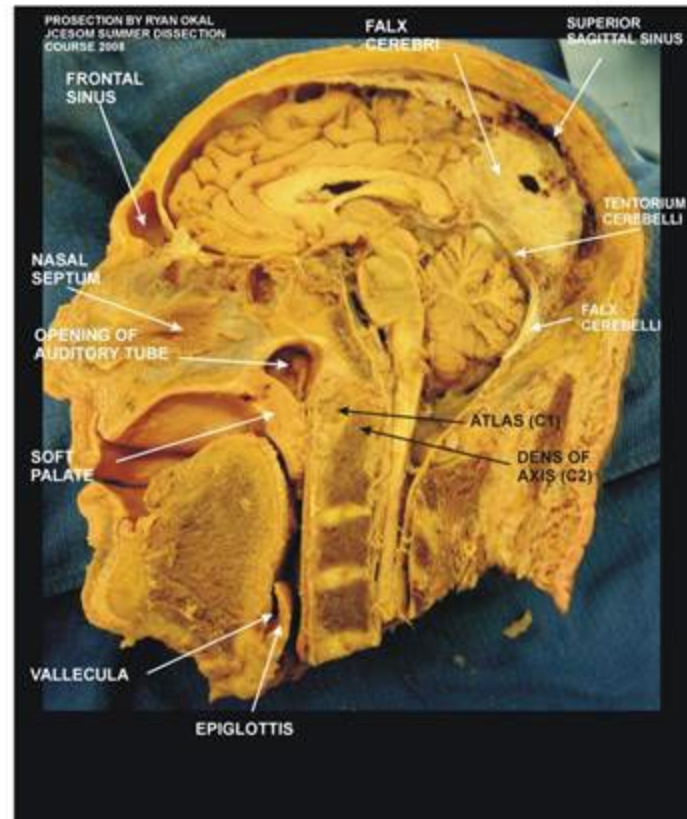
FACIAL MUSCLES

312

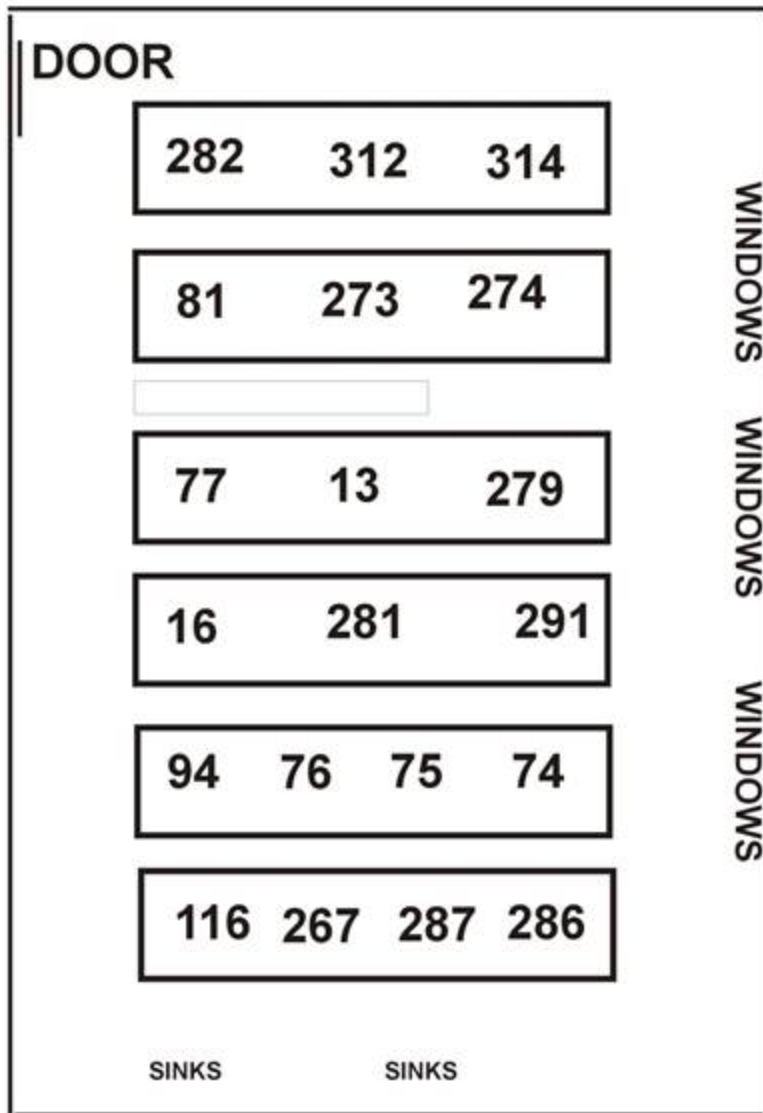


MEDIAL VIEW OF BISECTED HEAD

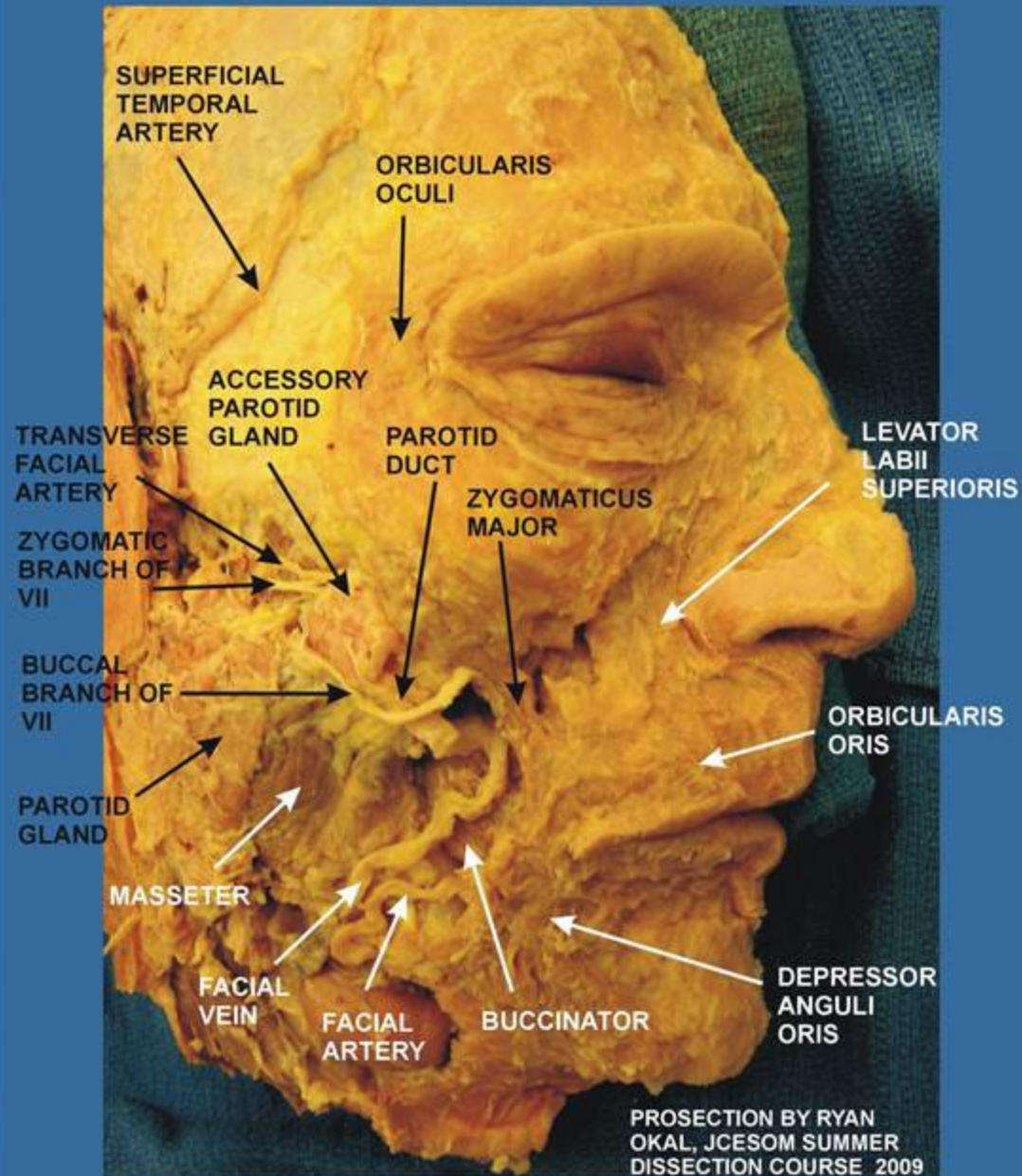
312



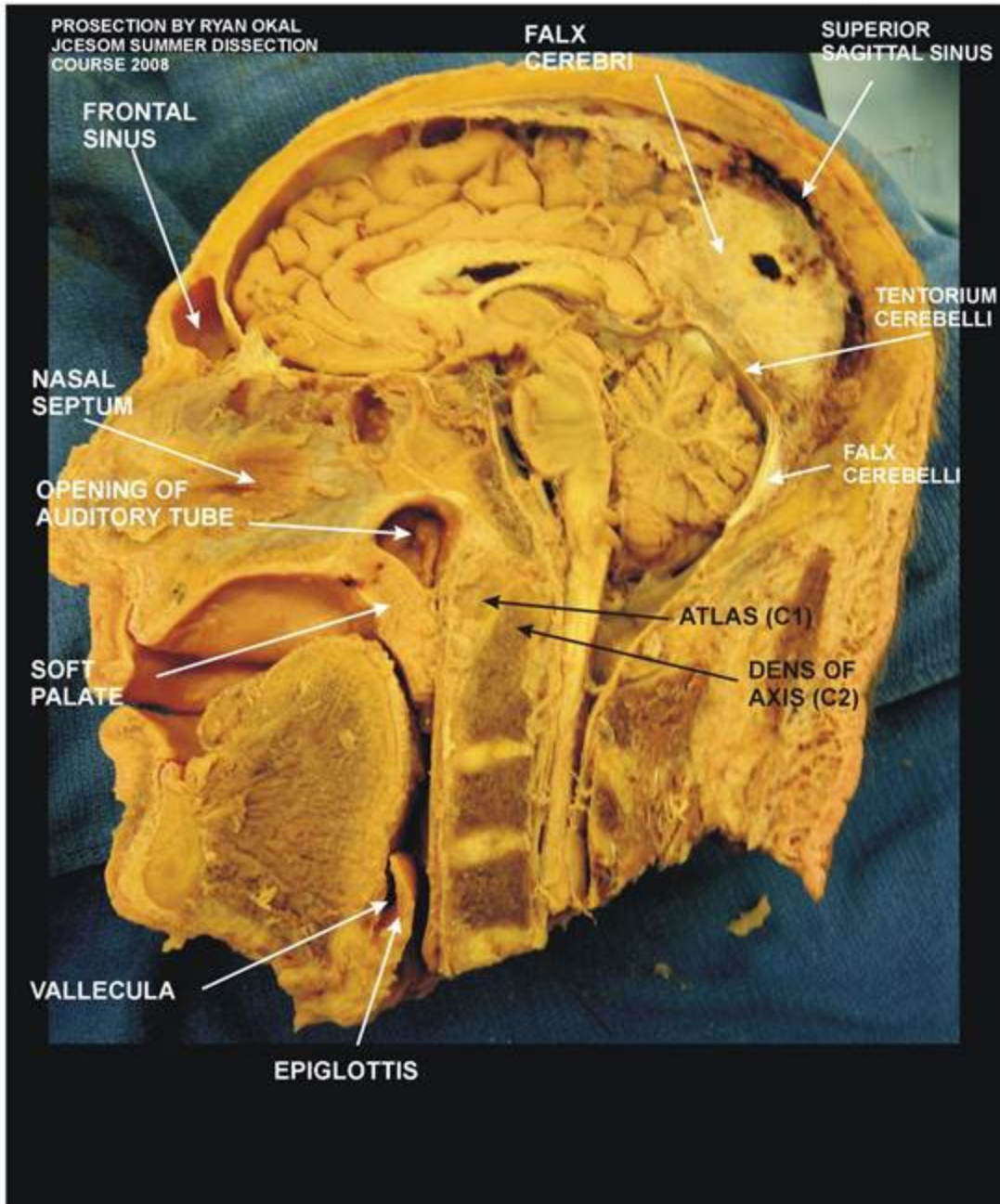
MAP OF LOCATION OF PROSECTIONS IN HISTOLOGY AREA 2024



312

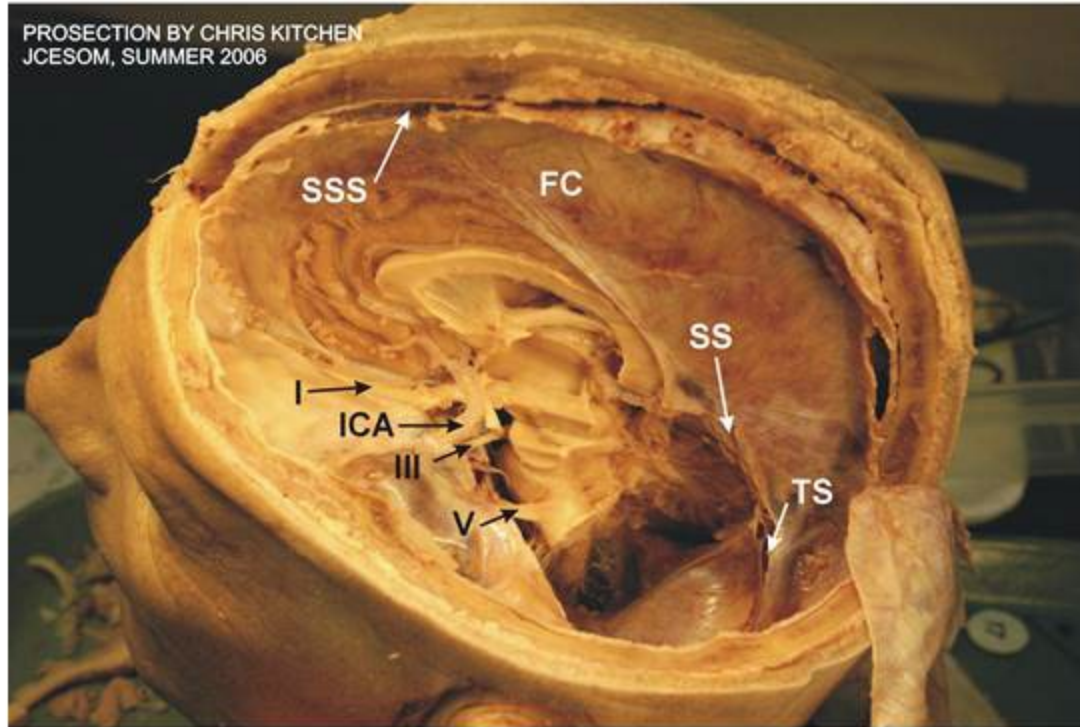


312



BRAIN (HEMISECTED) IN CRANIAL CAVITY

267

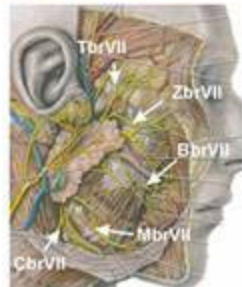
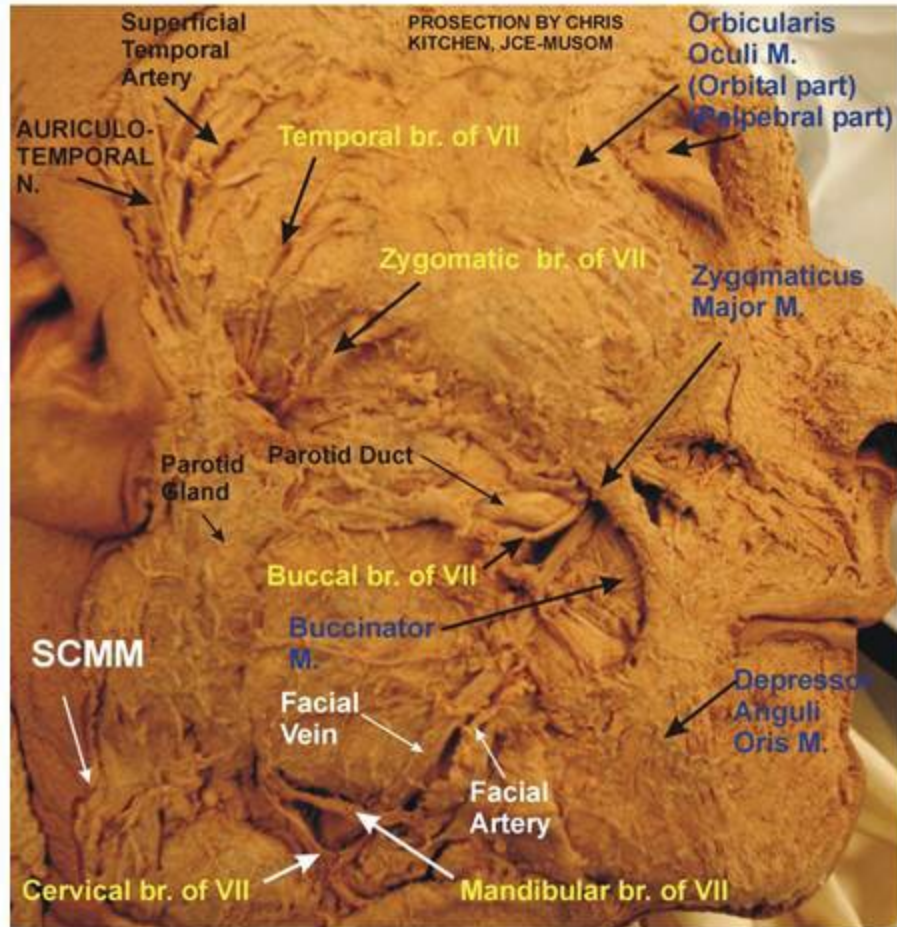


- I - OLFACTORY TRACT
- ICA - INTERNAL CAROTID ARTERY
- III - OCULOMOTOR NERVE
- V - TRIGEMINAL NERVE
- SSS - SUPERIOR SAGITTAL SINUS
- FC - FALX CEREBRI
- SS - STRAIGHT SINUS
- TS - TRANSVERSE SINUS

BRANCHES OF FACIAL NERVE (VII) AND SUPERFICIAL FACE

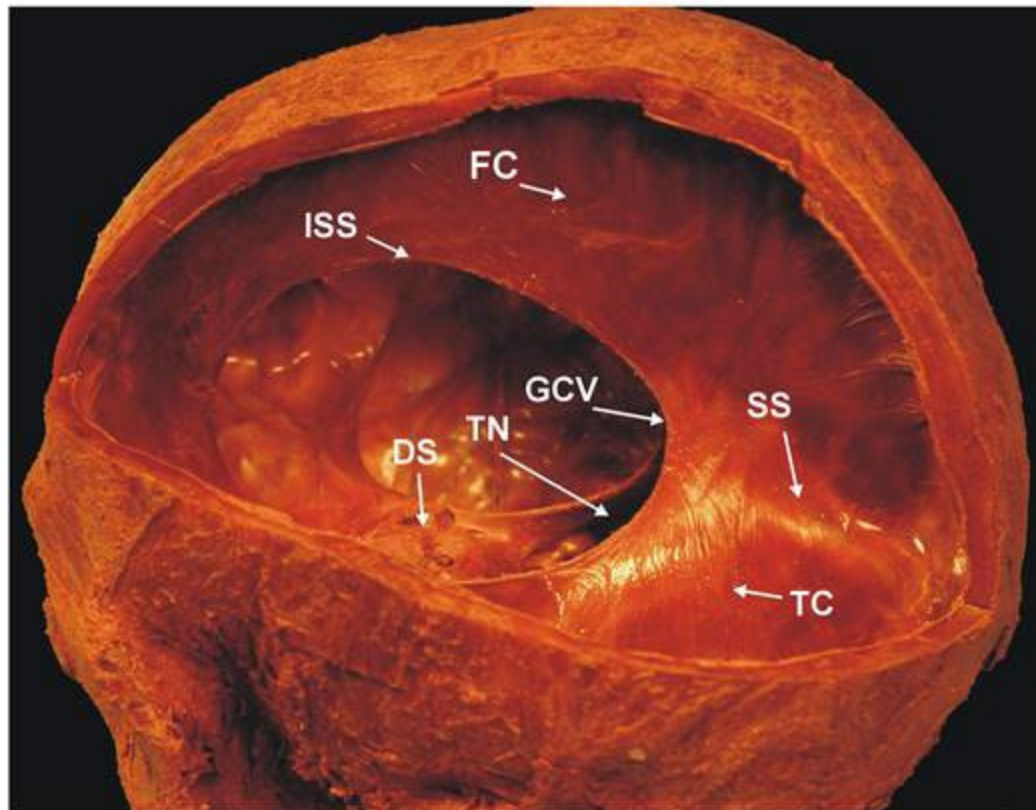
267

267



Superficial Temporal Artery
Auriculotemporal Nerve
TbrVII - Temporal branch of VII
ZbrVII - Zygomatic branch of VII
BbrVII - Buccal branch of VII
MbrVII - Mandibular branch of VII
CbrVII - Cervical branch of VII
Orbicularis oculi (orbital part)
Zygomaticus major
Levator Labii Superioris
Depressor Anguli Oris

Buccinator Muscle
Facial Vein
Facial Artery
Parotid Gland
Parotid Duct
Sternocleidomastoid M.

DURAL REFLECTIONS AND VENOUS SINUSES**279**

FC - FALX CEREBRI

TC - TENTORIUM CEREBELLI

ISS - LOCATION OF INFERIOR SAGITTAL SINUS

SS - LOCATION OF STRAIGHT SINUS

GCV - OPENING OF GREAT CEREBRAL VEIN OF GALEN

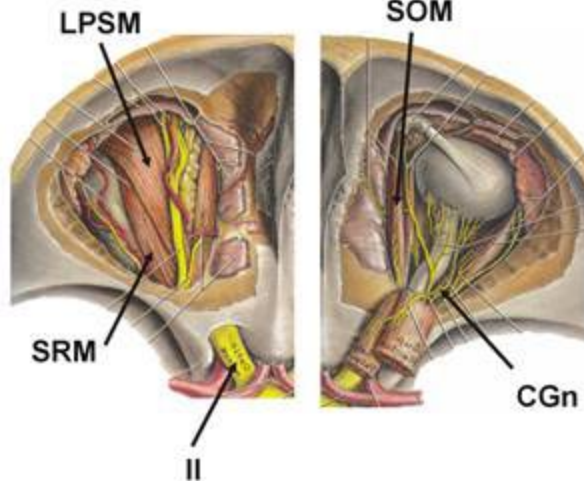
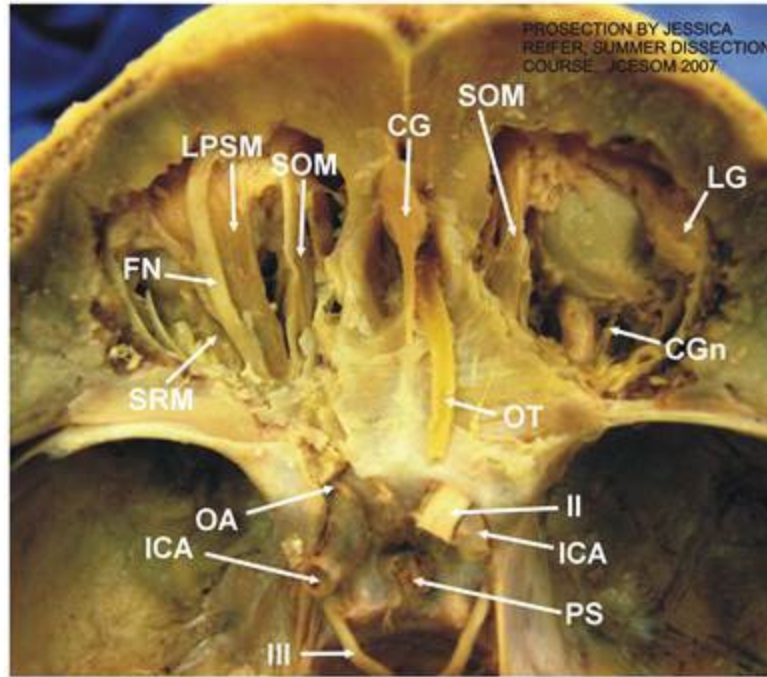
DS - DIAPHRAGMA SELLA

TN - TENTORIAL NOTCH

ORBIT: SUPERFICIAL AND DEEP DISSECTIONS

287

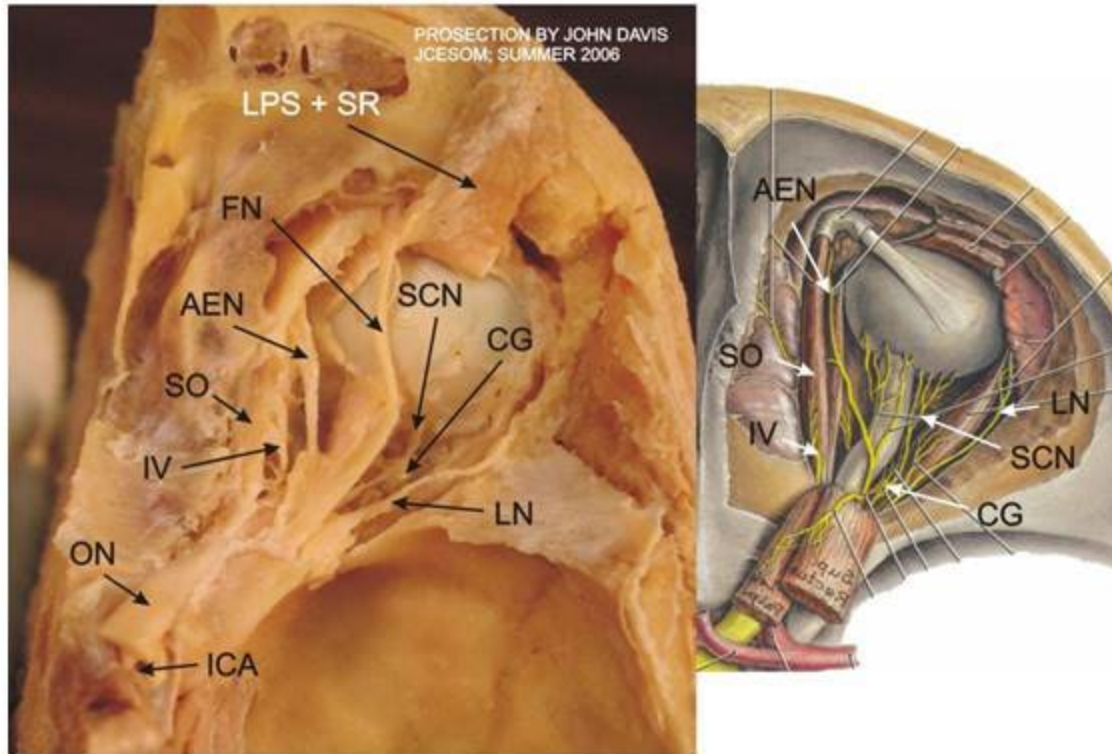
287



- ICA - INTERNAL CAROTID ARTERY
- III - OCULOMOTOR NERVE
- PS - PITUITARY STALK
- II - OPTIC NERVE
- OT - OLFACATORY TRACT
- CGn - CILIARY GANGLION
- LG - LACRIMAL GLAND
- CG - CRISTA GALLI
- SOM - SUPERIOR OBLIQUE MUSCLE
- LPSM - LEVATOR PALPEBRAE SUPERIORIS M.
- FN - FRONTAL NERVE
- SRM - SUPERIOR RECTUS MUSCLE
- OA - OPHTHALMIC ARTERY

PROSECTION OF ORBIT - Deep Dissection

273



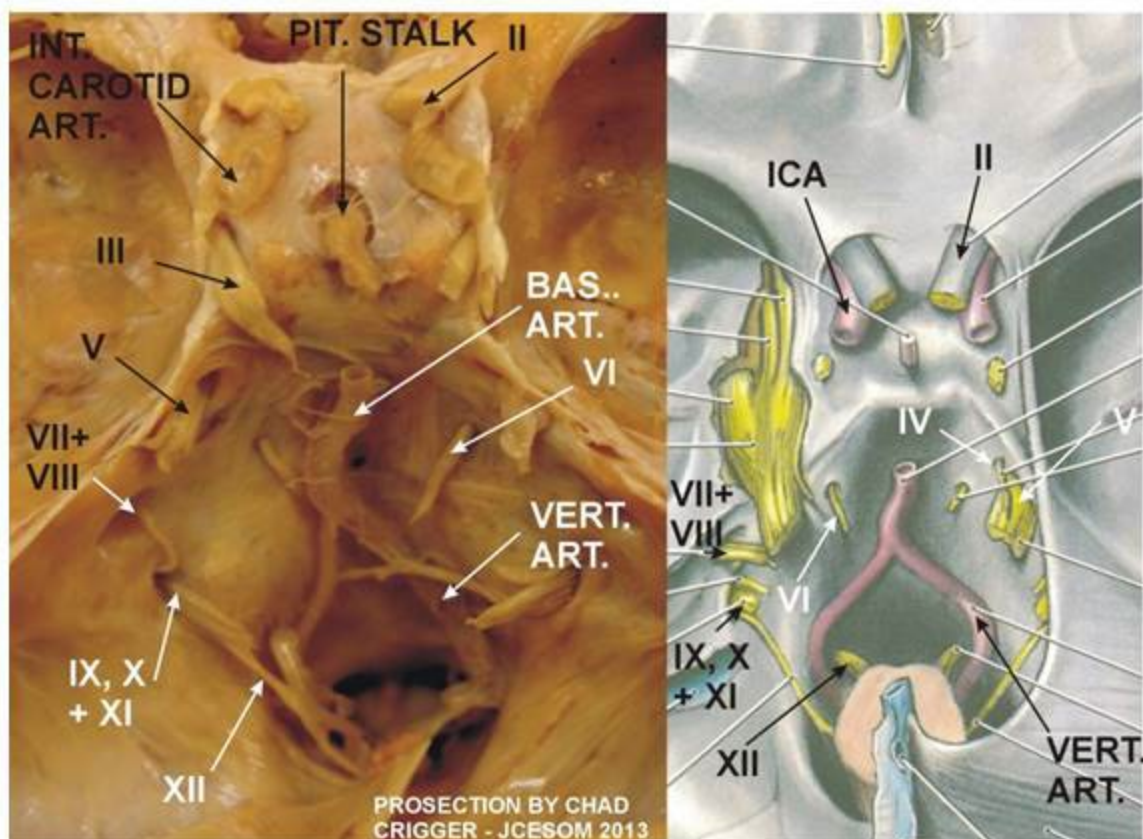
LPS + SR - LEVATOR PALPEBRAE SUPERIORIS
 AND SUPERIOR RECTUS MUSCLES REFLECTED
 IV - TROCHLEAR NERVE
 SO - SUPERIOR OBLIQUE MUSCLE
 AEN - ANTERIOR ETHMOIDAL NERVE
 FN - FRONTAL NERVE
 CG - CILIARY GANGLION
 SCN - SHORT CILIARY NERVES
 LN - LACRIMAL NERVE
 ON - OPTIC NERVE
 ICA - INTERNAL CAROTID ARTERY

NOTE:
 MANY STRUCTURES
 DESSICATED
 BUT INTACT
 CILIARY GANGLION

CRANIAL NERVES

13

13



VERT. ART. - Vertebral Artery
VII - Facial Nerve
VIII - Vestibulocochlear Nerve
IX - Glossopharyngeal Nerve
X - Vagus
XI - Accessory
XII - Hypoglossal

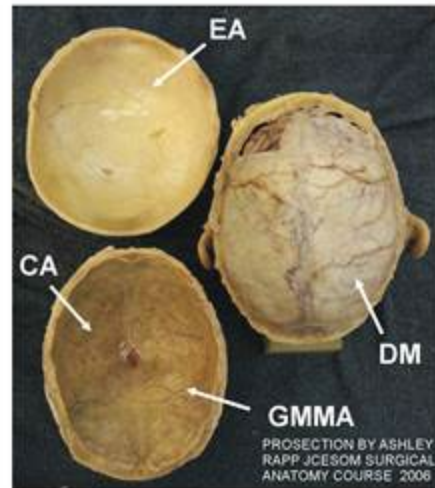
INT. CAROTID ART. - Internal Carotid Artery
BAS. ART. - Basilar Artery
II - Optic Nerve
V - Trigeminal
VI - Abducens

282

SCALP, CALVARIUM AND DURA MATER

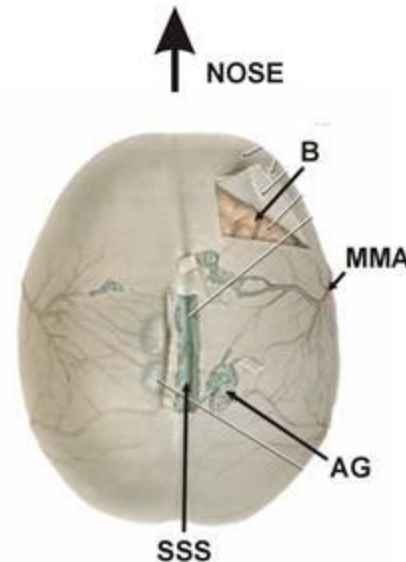
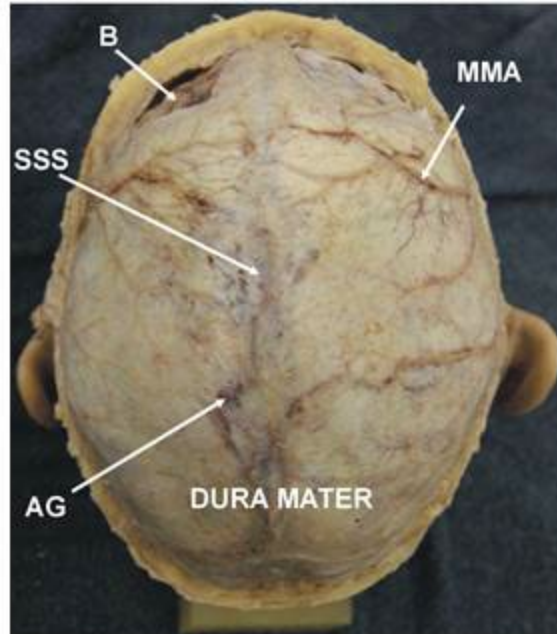
282

INNER SIDE OF CALVARIUM AND SCALP



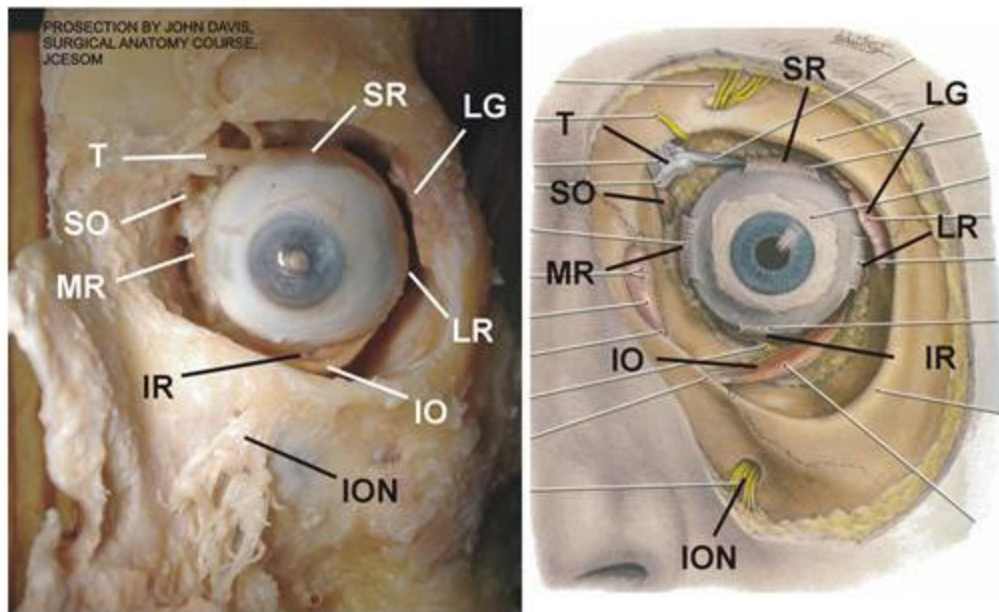
- EA - EPICRANIAL APONEUROSIS (ON INNER SIDE OF SCALP)
- CA - CALVARIUM WITH DURA MATER REMOVED
- GMMA - GROOVE FOR MIDDLE MENINGEAL ARTERY
- DM - DURA MATER
- B - BRAIN
- SSS - SUPERIOR SAGITAL SINUS
- AG - ARACHNOID GRANULATION
- MMA - MIDDLE MENINGEAL ARTERY

DURA MATER AT HIGH MAG



PROSECTION OF ORBIT - ANTERIOR VIEW

274



- SO - Superior oblique muscle
- T - Trochlea (pulley for SO tendon)
- SR - Superior rectus muscle (insertion)
- LR - Lateral rectus muscle (insertion)
- IR - Inferior rectus muscle (insertion)
- IO - Inferior oblique muscle
- MR - Medial rectus muscle (insertion)
- LG - Lacrimal Gland
- ION - Infraorbital nerve (V2)

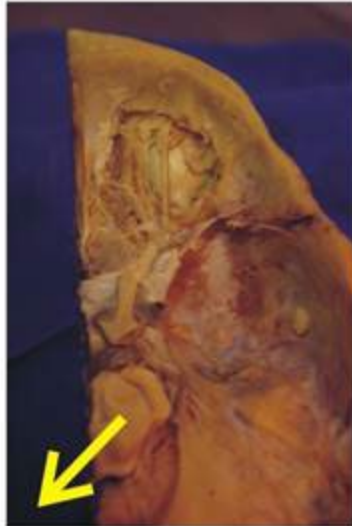
Note: tilt prosection or gently move eye to see rectus muscles

ORBIT: DEEP VIEW AND TROCHLEAR NERVE

74

74

PLEASE NOTE:
THIS IS A VERY
FRAGILE
PROSECTION!



EVER SO GENTLY
DISPLACE
THE BRAIN STEM
(SLIGHTLY) TO
SEE THE
COURSE OF
THE TROCHLEAR
NERVE



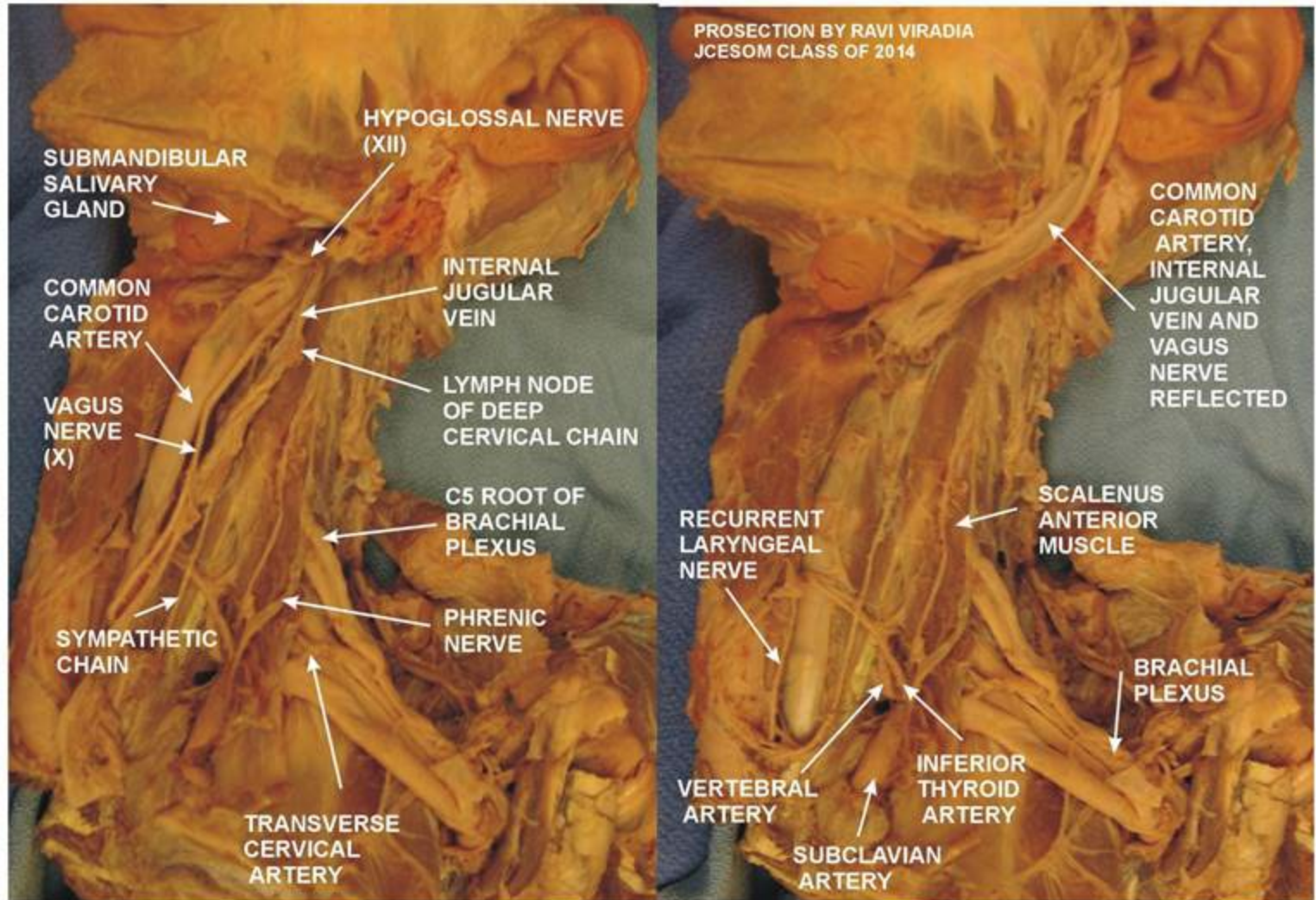
SUPERFICIAL AND DEEP NECK

SUPERFICIAL VIEW

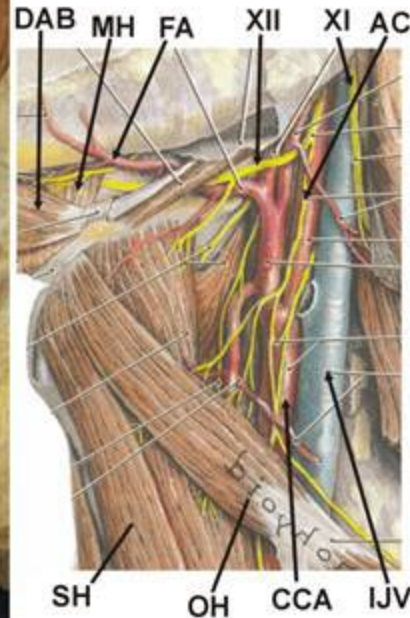
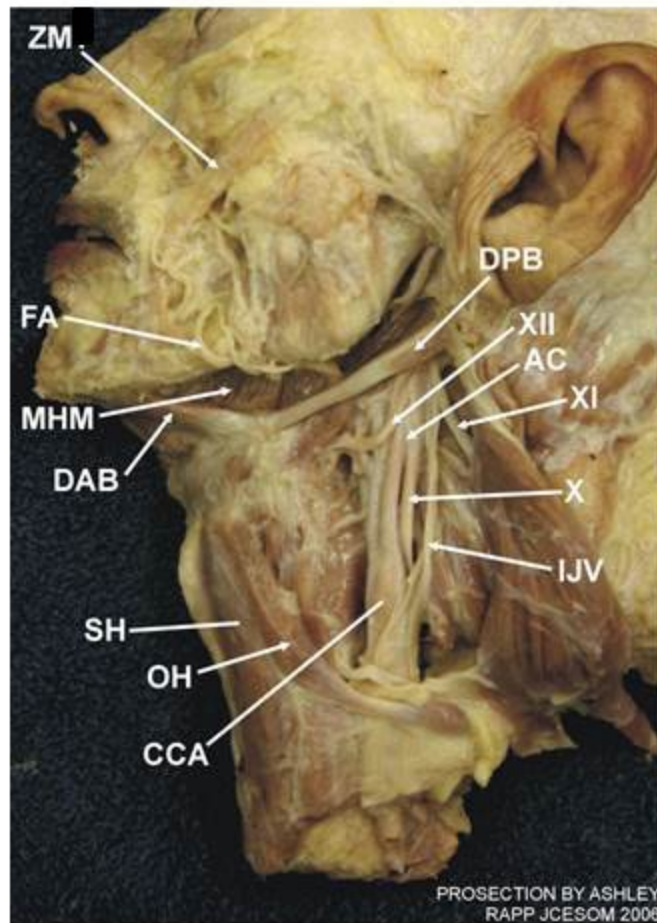
DEEP VIEW

16

16



ANTERIOR NECK: ACCESSORY NERVE



FA - FACIAL ARTERY
 MHM - MYLOHYOID MUSCLE
 DAB - DIGASTRIC ANTERIOR BELLY
 DPB - DIGASTRIC POSTERIOR BELLY
 SH - STERNOHYOID
 OH - OMOHYOID
 CCA - COMMON CAROTID ARTERY

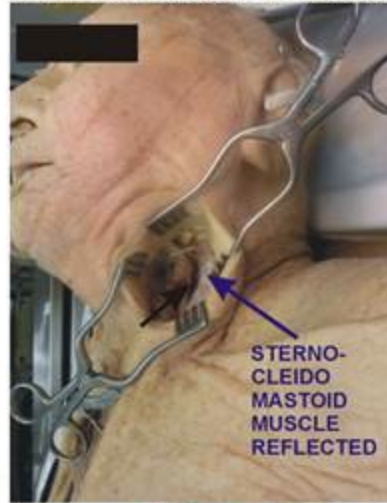
XII - HYPOGLOSSAL NERVE
 AC - ANSA CERVICALIS
 XI - ACCESSORY NERVE
 X - VAGUS NERVE
 IJV - INTERNAL JUGULAR VEIN
 ZM - ZYGOMATICUS MAJOR

SURGICAL PROSECTION: CAROTID ENDARTERECTOMY

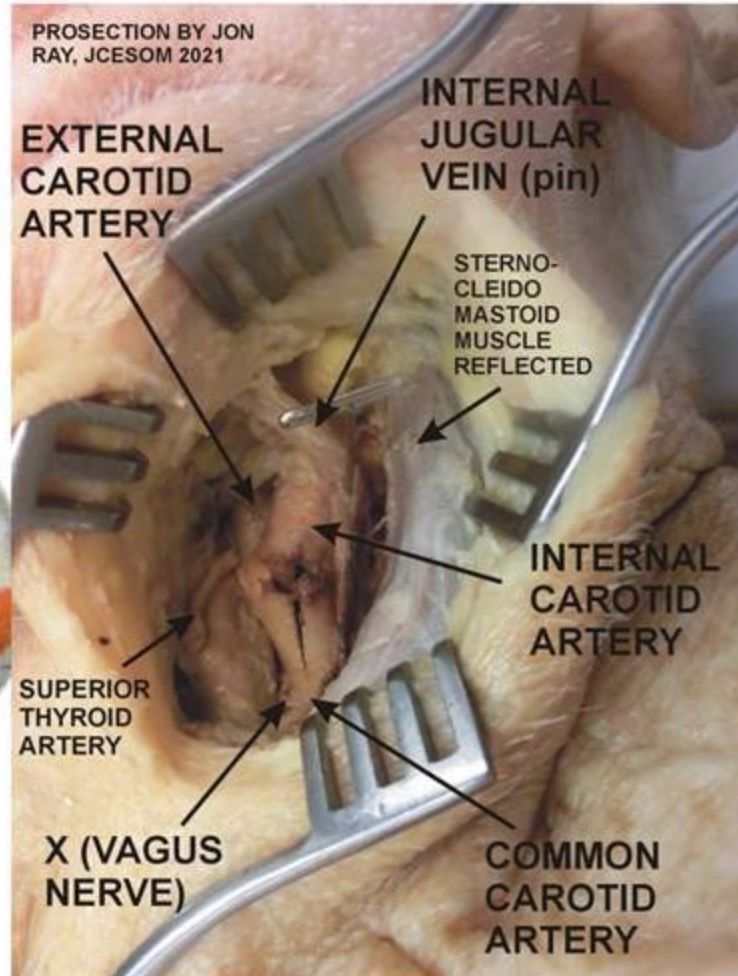
76

76

SKIN INCISION ANTERIOR TO
STERNOCLEIDOMASTOID MUSCLE



CAROTID SHEATH INCISED TO
EXPOSE CONTENTS; ARTERY
INCISED FOR PLAQUE REMOVAL

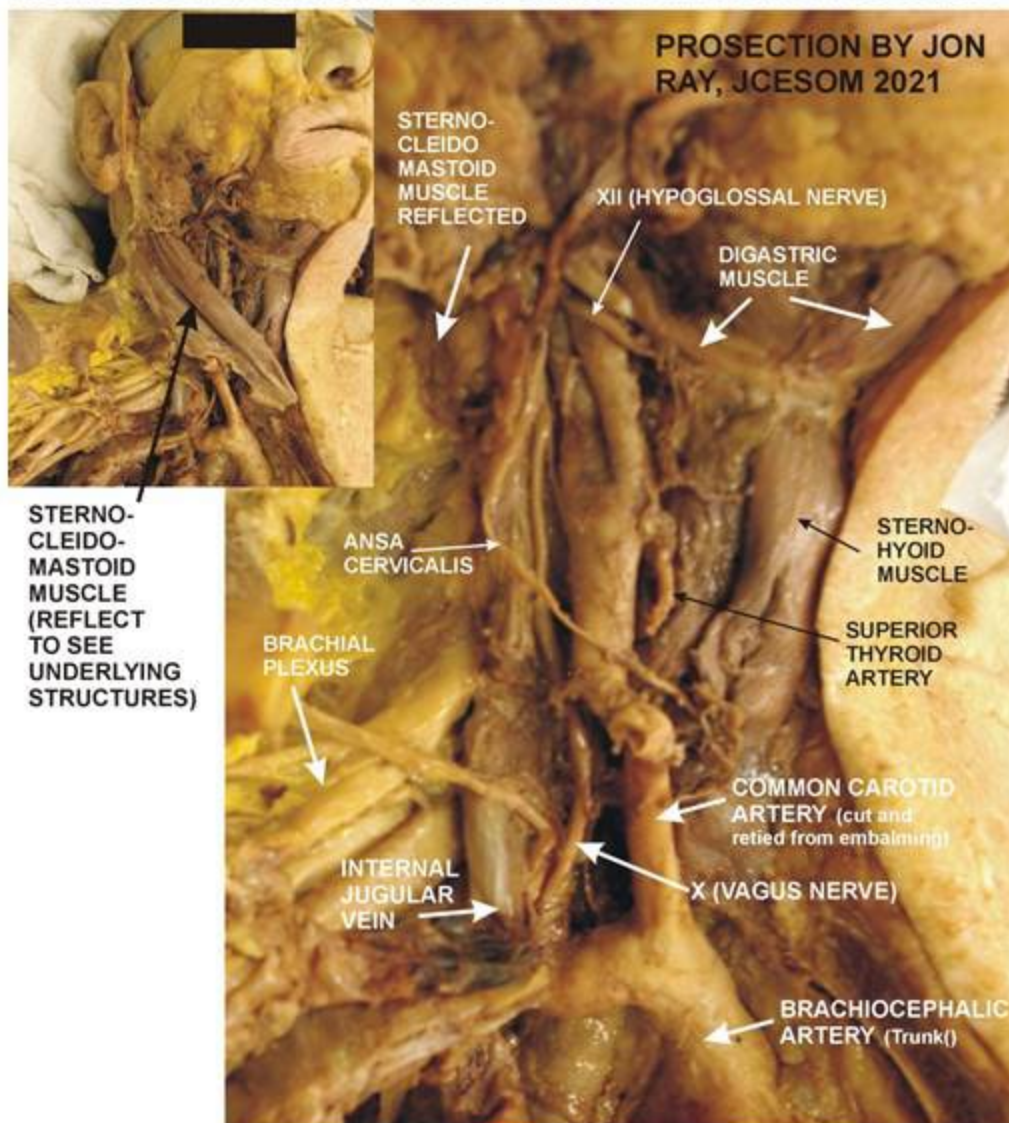


DISSECTION OF ANTERIOR NECK

76

76

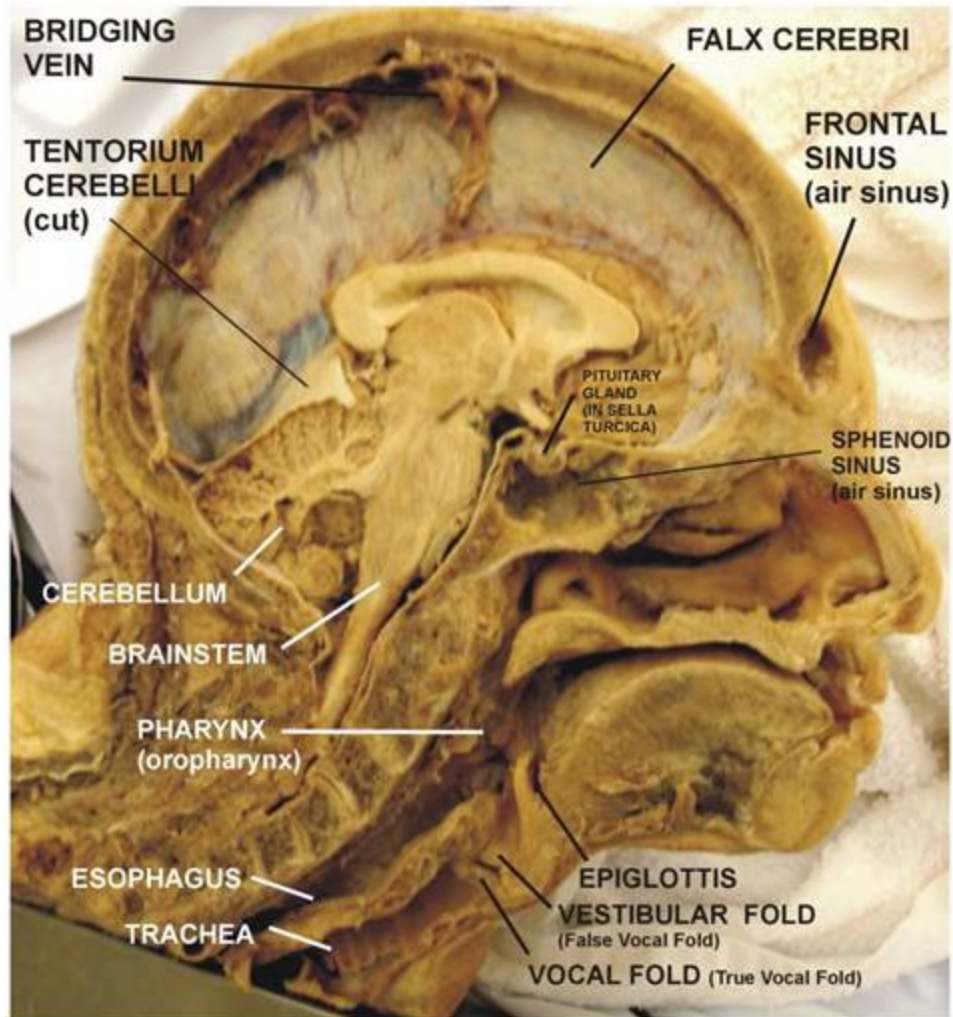
NECK DISSECTED ON RIGHT SIDE OF SURGICAL ANATOMY PROSECTION



BISECTED HEAD WITH INTACT FALX CEREBRI

75

75

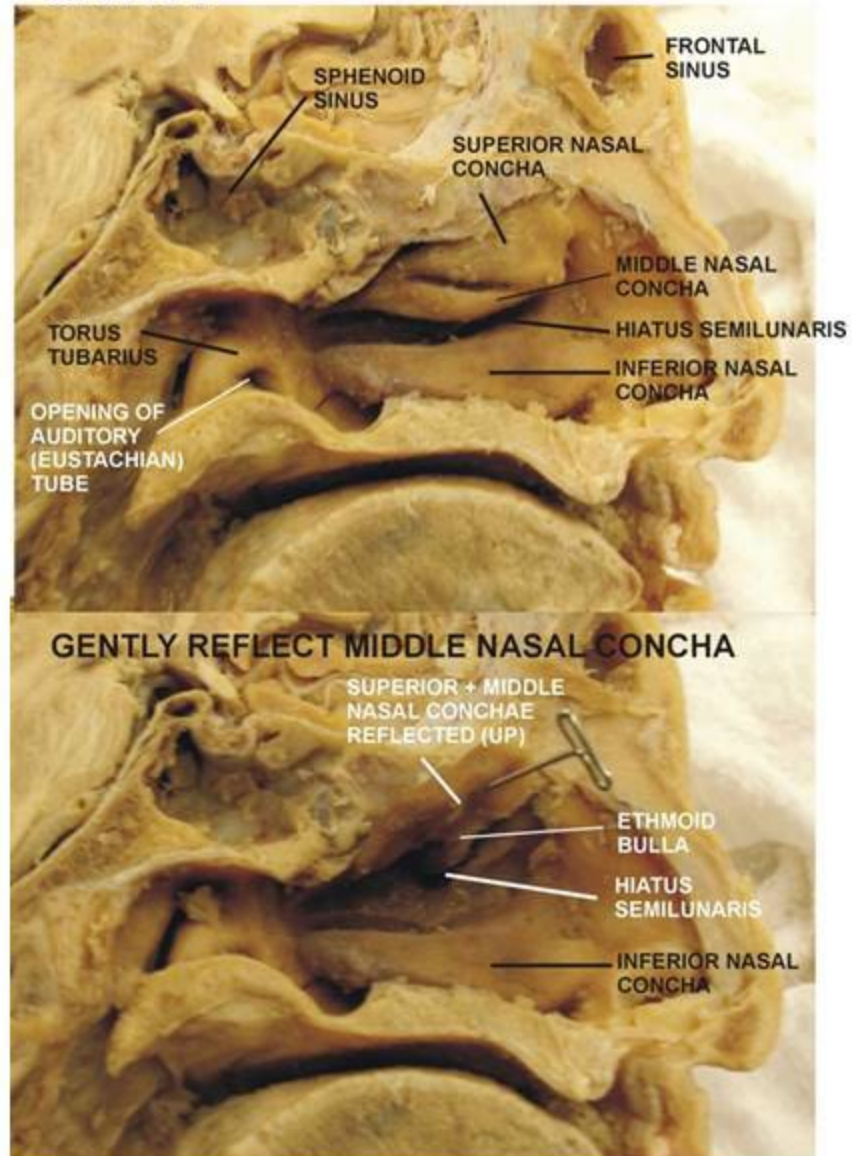


Note: Bridging Vein - cut when brain removed but still attached and entering Sup. Sagittal Sinus

BISECTED HEAD: NASAL CAVITY

75

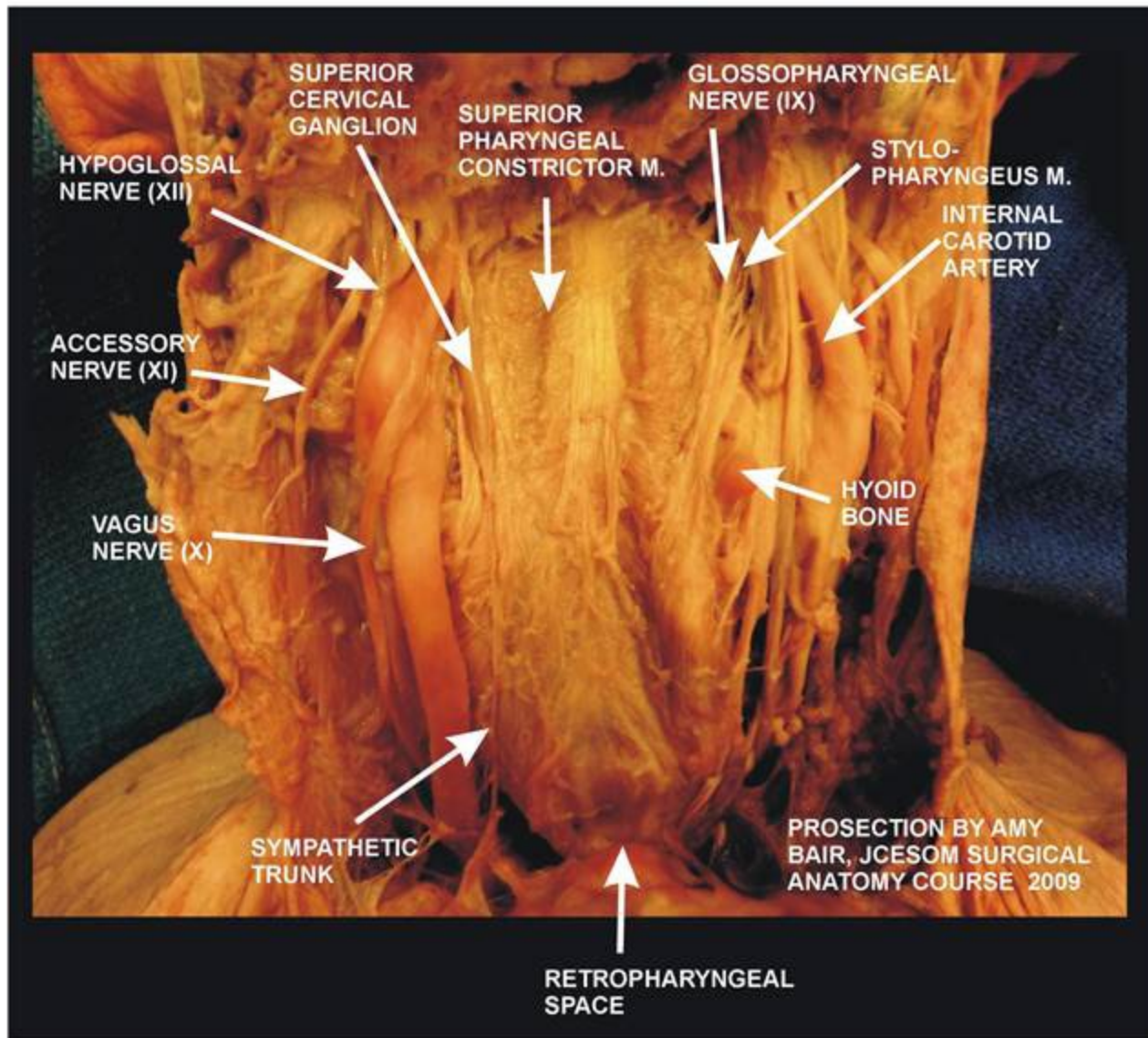
75



POSTERIOR PHARYNX AND RETROPHARYNGEAL SPACE

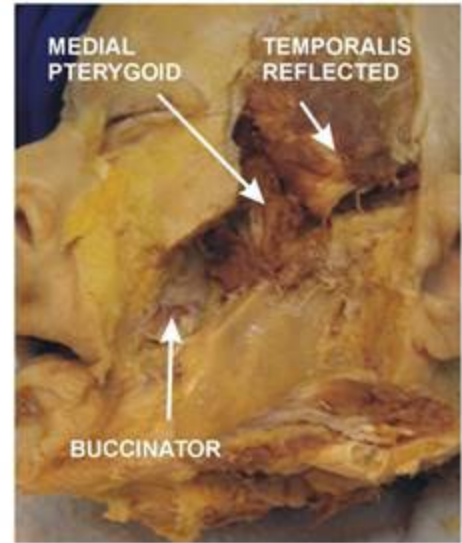
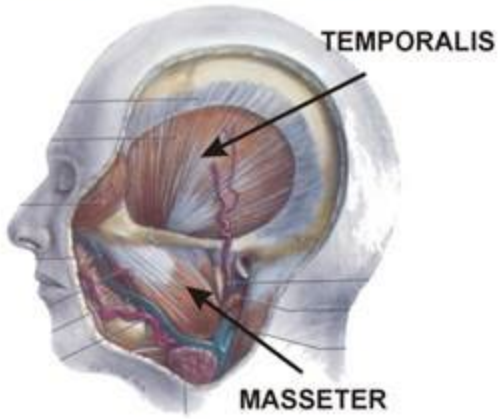
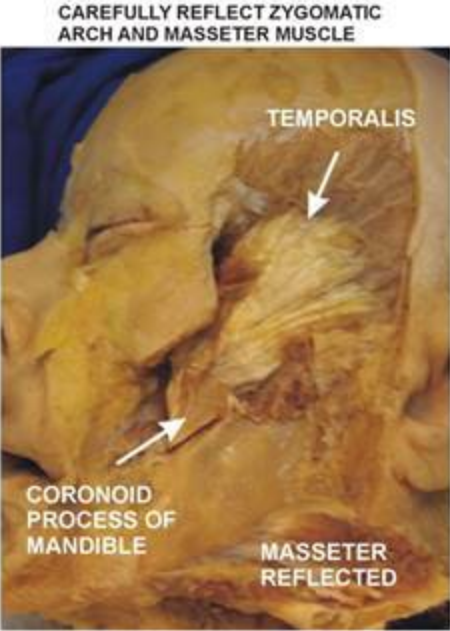
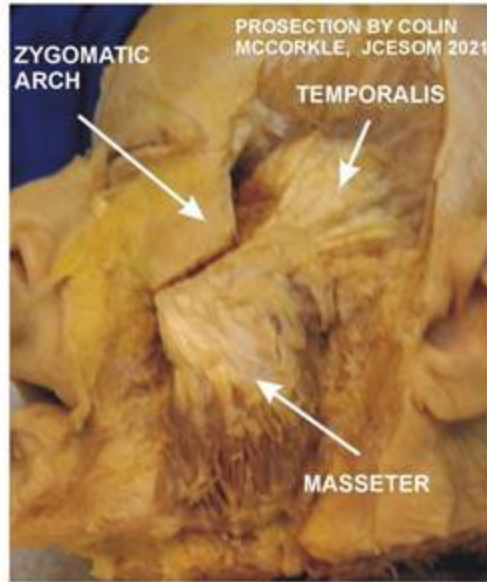
314

314



MUSCLES OF MASTICATION

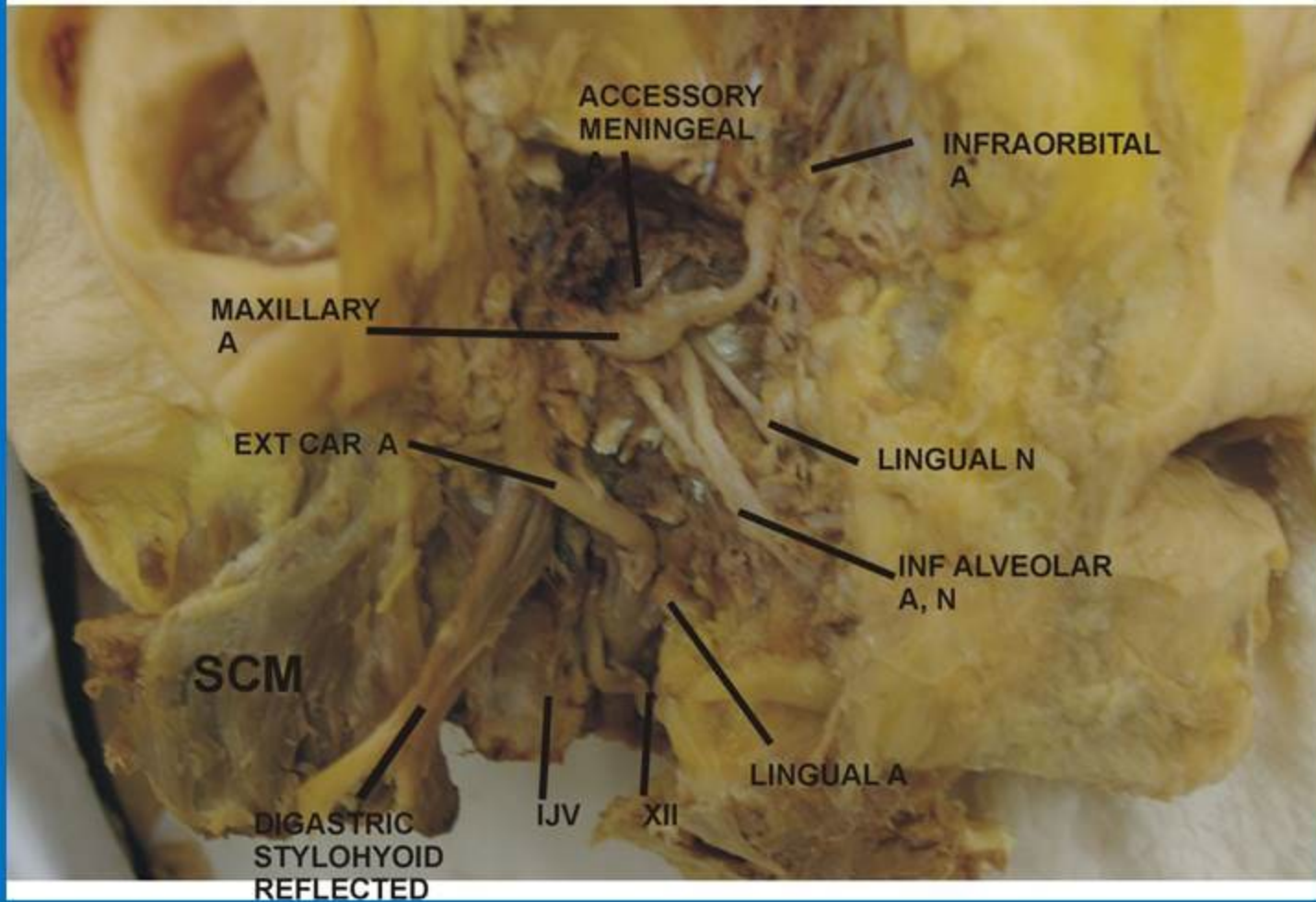
81



INFRATEMPORAL FOSSA PROSECTION

81

Colin McCorkle, 2021



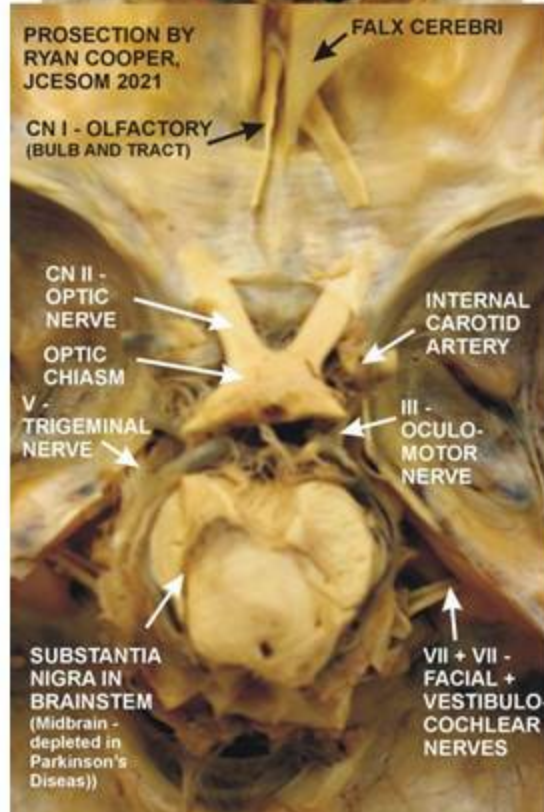
BRAINSTEM IN CRANIAL CAVITY

77

ORIENT: CALVARIUM,
BRAIN REMOVED;
BRAINSTEM,
EXPOSED IN
CRANIAL CAVITY

77

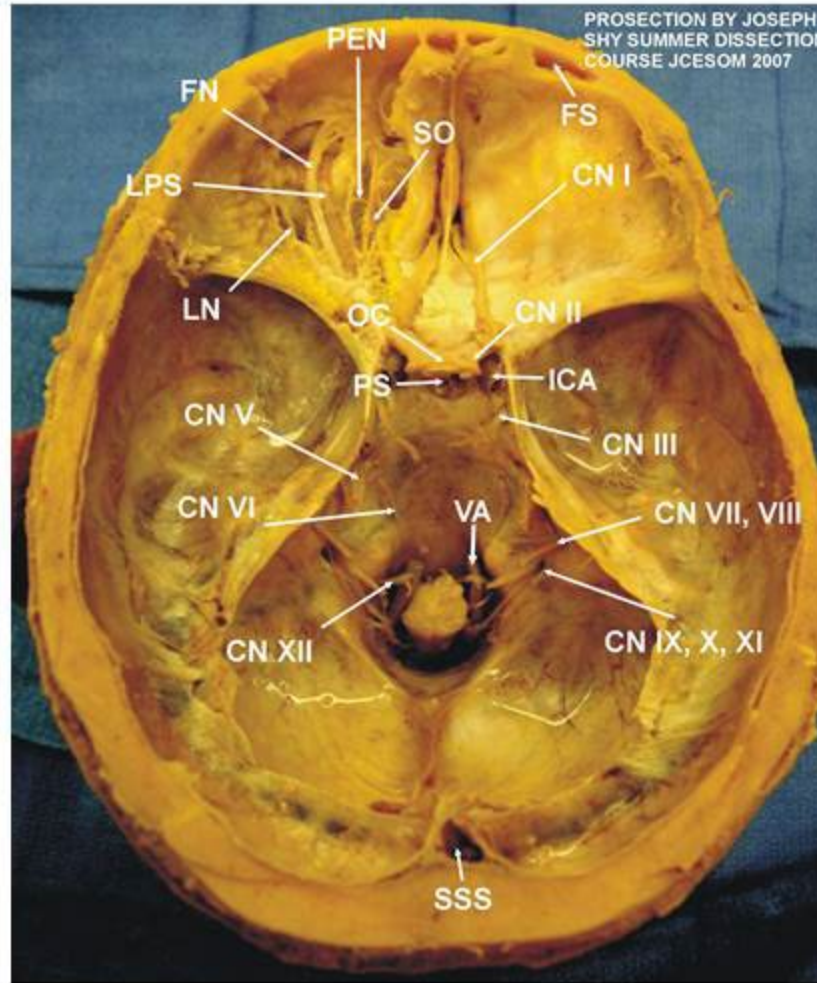
77 Ryan
Cranial Nerves



NOTE:
PLEASE
TREAT
THIS
PROSECTIONS
GENTLY;
DO NOT
PULL ON
BRAINSTEM

CRANIAL NERVES AND SUPERFICIAL ORBIT

286



286

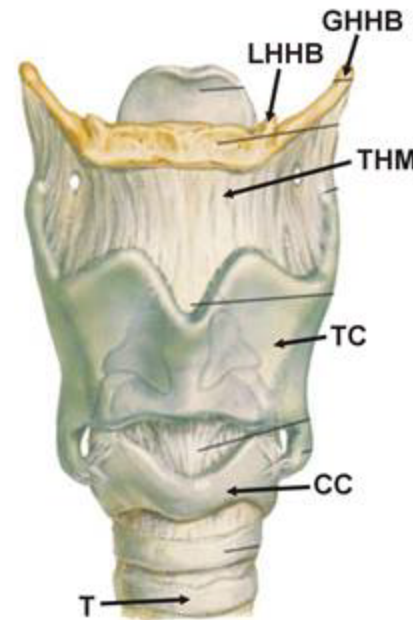
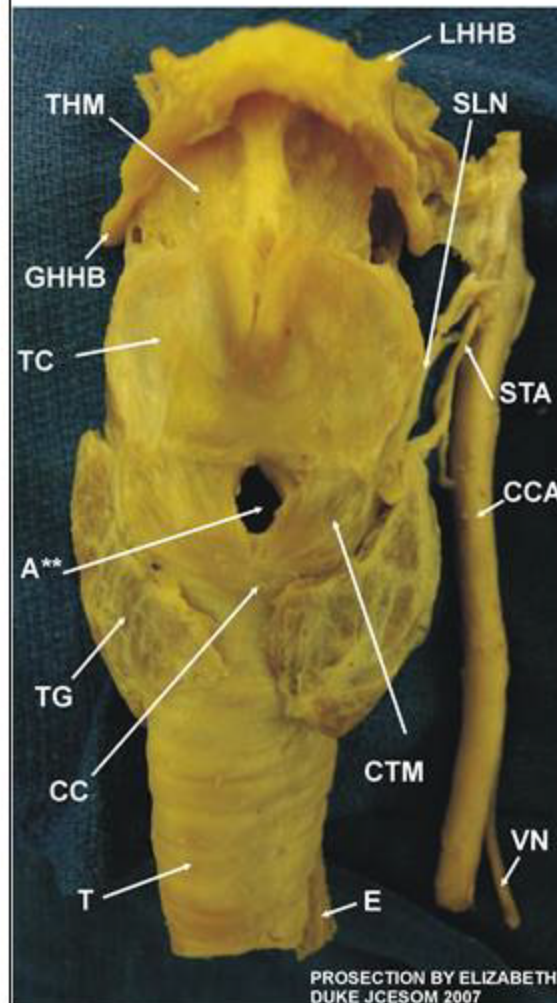
SSS - SUPERIOR SAGITTAL SINUS
CN XII - HYPOGLOSSAL NERVE
CN IX, X, XI - CRANIAL NERVES 9, 10, 11
CN VII, VIII - FACIAL, VESTIBULO-
COCHLEAR NERVES
VA - VERTEBRAL ARTERY
FS - FRONTAL SINUS
FN - FRONTAL NERVE
LPS - LEVATOR PALPEBRAE
SUPERIORIS MUSCLE
LN - LACRIMAL NERVE

PS - PITUITARY STALK
ICA - INTERNAL CAROTID ARTERY
CN II - OPTIC NERVE
OC - OPTIC CHIASM
CN I - OLFACTORY NERVE
SO - SUPERIOR OBLIQUE MUSCLE
PEN - POSTERIOR ETHMOIDAL NERVE
CN III - OCULOMOTOR NERVE
CN V - TRIGEMINAL NERVE
CN VI - ABDUCENS NERVE

291

LARYNX: ANTERIOR VIEW

291

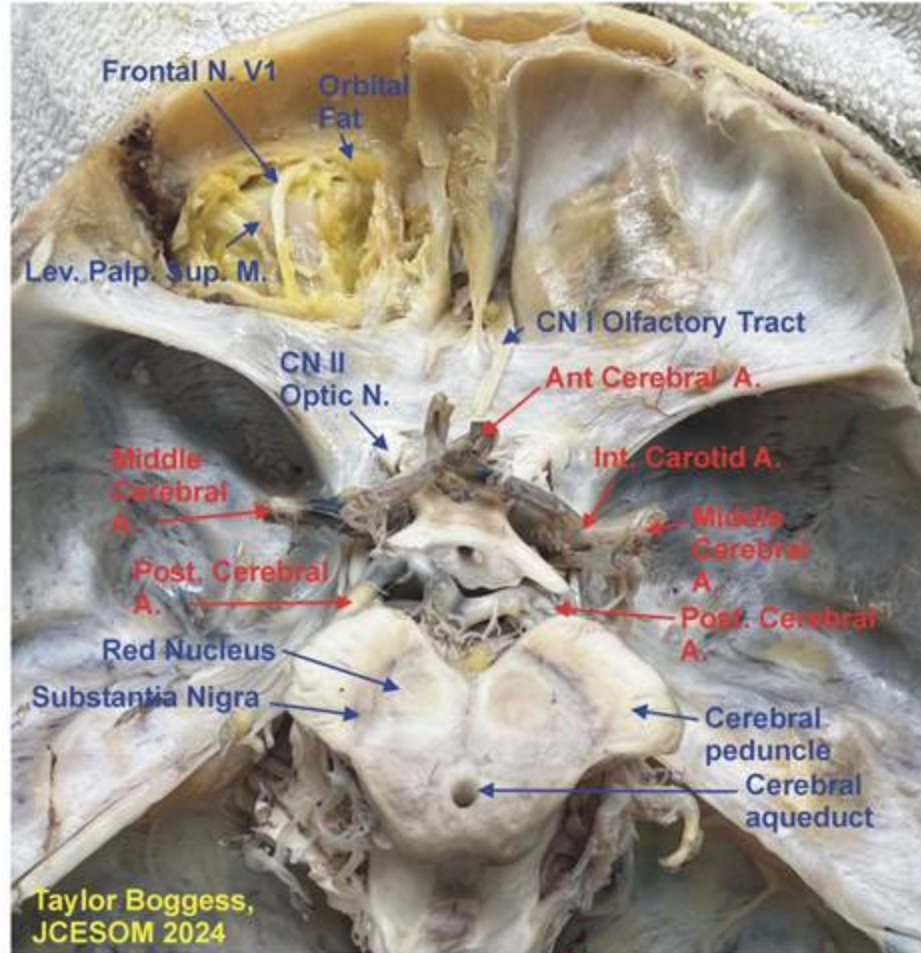


NOTE: A** - AIRWAY IS CUT IN CRICOTHYROID MEMBRANE IN CRICOTHYROTOMY; THIS EMERGENCY PROCEDURE AVOIDS BLEEDING THAT CAN OCCUR IN TRACHEOTOMY

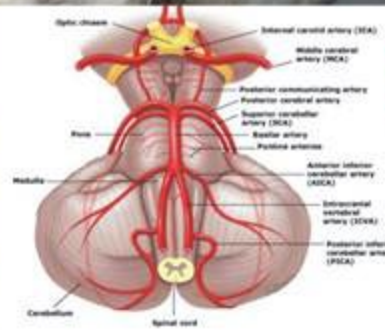
THM - THYROHYOID MEMBRANE
GHHB - GREATER HORN OF HYOID BONE
LHHB - LESSER HORN OF HYOID BONE
STA - SUPERIOR THYROID ARTERY
TC - THYROID CARTILAGE
SLN - SUPERIOR LARYNGEAL NERVE
CTM - CRICOTHYROID MUSCLE

CC - CRICOID CARTILAGE
CCA - COMMON CAROTID ARTERY
TG - THYROID GLAND
T - TRACHEA
E - ESOPHAGUS
VN - VAGUS NERVE

116



ORIENT



LEVEL OF VIEW