

PLATE 2.

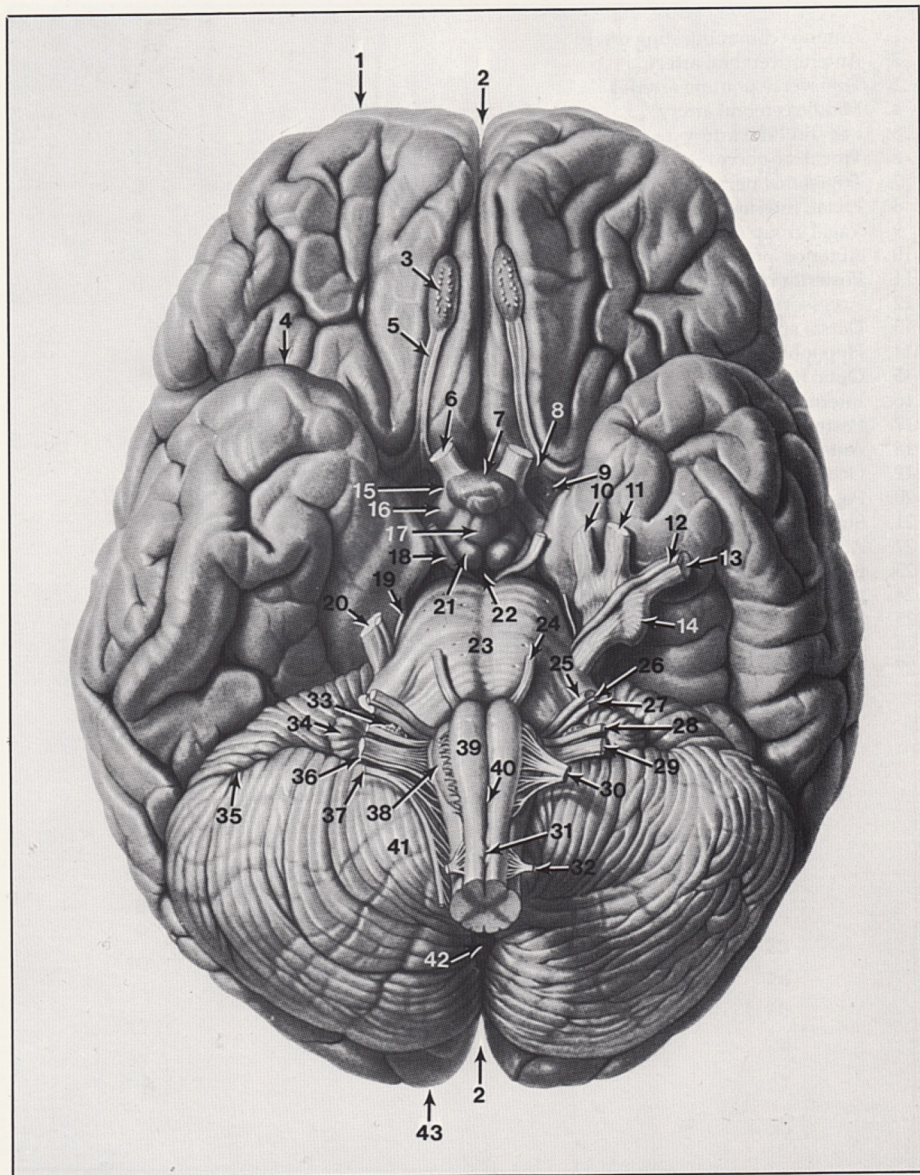


Plate 2. Base of the Brain with the Cranial Nerves

1. Frontal pole
2. Longitudinal cerebral fissure
3. Olfactory bulb
4. Temporal pole
5. Olfactory tract
6. Optic nerve
7. Hypophysis
8. Olfactory trigone
9. Anterior perforated substance
10. Ophthalmic nerve CN V
11. Maxillary nerve CN V
12. Motor root CN V
13. Mandibular nerve CN V
14. Trigeminal ganglion
15. Optic chiasm
16. Optic tract
17. Tuber cinereum
18. Oculomotor nerve
19. Trochlear nerve
20. Sensory root of trigeminal nerve
21. Mamillary body
22. Interpeduncular fossa
23. Pons (basilar sulcus)
24. Abducent nerve
25. Facial nerve
26. Intermediate nerve of CN VII
27. Vestibulocochlear nerve
28. Glossopharyngeal nerve
29. Vagal nerve
30. Hypoglossal nerve
31. Pyramidal decussation
32. Ventral root of first cervical nerve
33. Choroid plexus of fourth ventricle
34. Flocculus
35. Horizontal fissure
36. Cranial root of accessory nerve
37. Spinal root of accessory nerve
38. Olive
39. Pyramid
40. Ventral median fissure
41. Tonsil
42. Vermis of cerebellum
43. Occipital pole

PLATE 3.

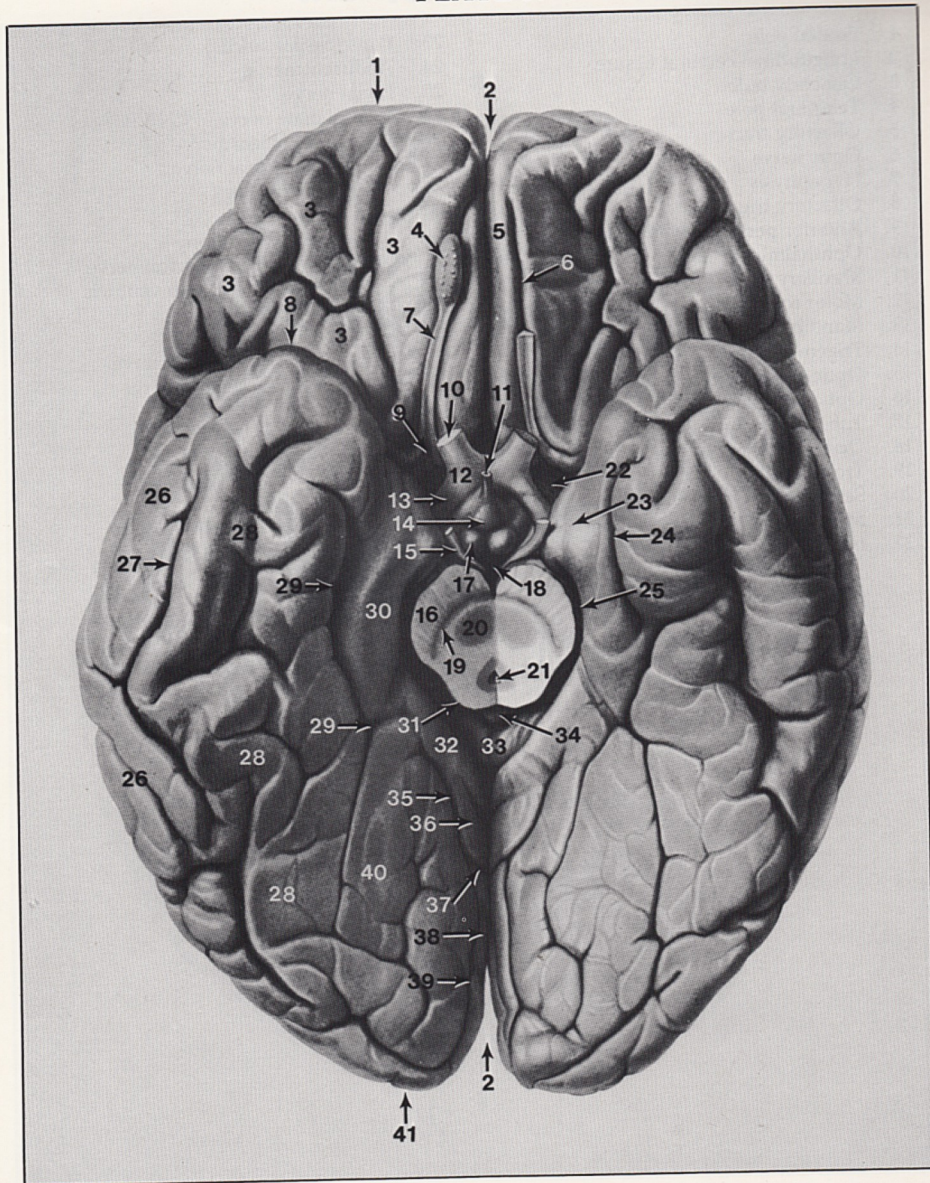


Plate 3. Base of the Brain with the Brain Stem Removed

1. Frontal pole
2. Longitudinal cerebral fissure
3. Orbital gyri
4. Olfactory bulb
5. Gyrus rectus
6. Olfactory sulcus
7. Olfactory tract
8. Temporal pole
9. Olfactory trigone
10. Optic nerve
11. Infundibulum
12. Optic chiasm
13. Optic tract
14. Tuber cinereum
15. Oculomotor nerve
16. Basis pedunculi
17. Mamillary body
18. Interpeduncular fossa
19. Substantia nigra
20. Red nucleus
21. Cerebral aqueduct
22. Diagonal band of Broca and anterior perforated substance
23. Uncus and uncal notch
24. Rhinal sulcus
25. Hippocampal sulcus
26. Inferior temporal gyrus
27. Inferior temporal sulcus
28. Lateral occipitotemporal gyrus
29. Collateral sulcus
30. Parahippocampal gyrus
31. Superior colliculus
32. Isthmus of cingulate gyrus
33. Corpus callosum, splenium
34. Pineal body
35. Calcarine sulcus
36. Precuneus
37. Parietooccipital sulcus
38. Cuneus
39. Calcarine sulcus
40. Medial occipitotemporal gyrus
41. Occipital pole

PLATE 4.

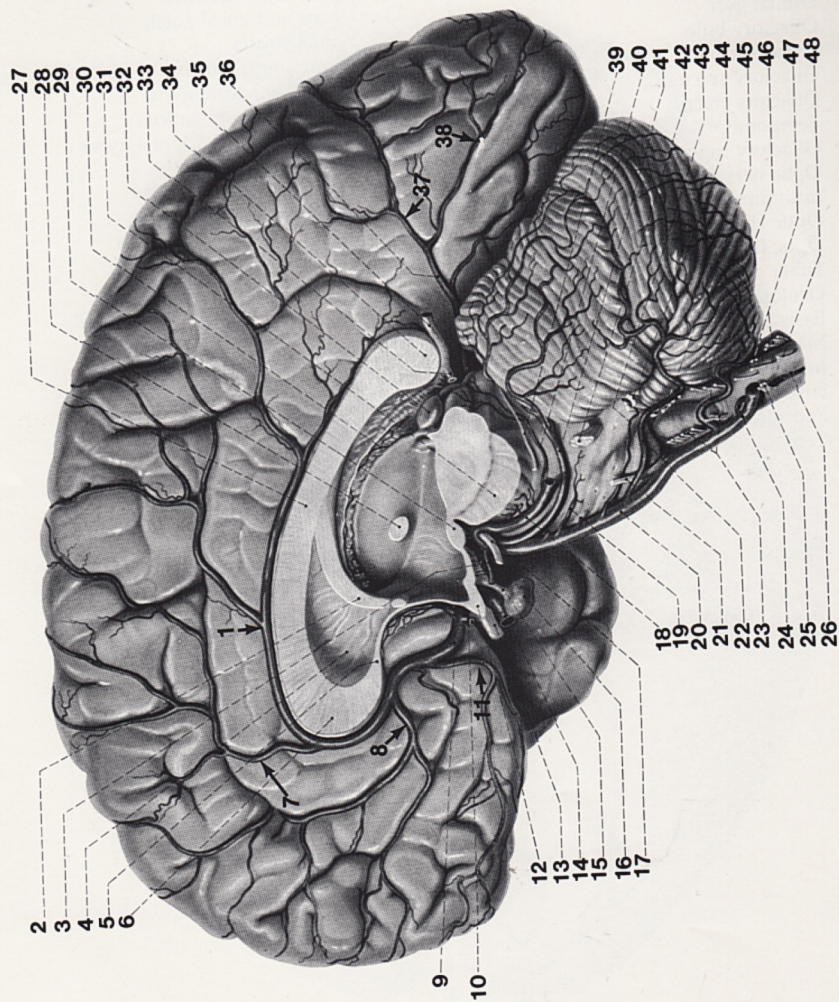
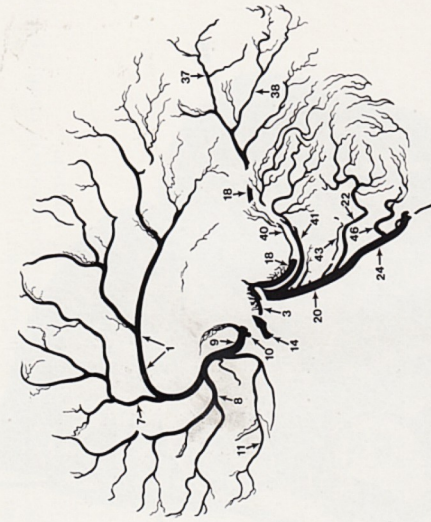


Plate 4. Arteries of the Medial Aspect of the Right Cerebral Hemisphere and the Brain Stem



1. Pericallosal artery
2. Fornix, column
3. Posterior communicating artery
4. Septum pellucidum
5. Corpus callosum, rostrum
6. Corpus callosum, genu
7. Callosomarginal artery
8. Frontopolar artery
9. Anterior cerebral artery
10. Anterior communicating artery
11. Orbital artery
12. Optic chiasm
13. Optic nerve
14. Internal carotid artery
15. Infundibulum
16. Hypophysis
17. Oculomotor nerve
18. Posterior cerebral artery
19. Transverse pontine artery
20. Basilar artery
21. Abducent nerve
22. Anterior inferior cerebellar artery (AICA)
23. Hypoglossal nerve
24. Vertebral artery
25. First cervical nerve (ventral rootlets)
26. Dorsal spinal artery
27. Corpus callosum, body
28. Interthalamic adhesion
29. Mamillary body
30. Choroid plexus of third ventricle
31. Basis pedunculi
32. Pinal body (epiphysis)
33. Internal cerebral vein
34. Corpus callosum, splenium
35. Great cerebral vein
36. Posterior cerebral artery (PCA)
37. Parietooccipital artery
38. Calcarine artery
39. Trochlear nerve
40. Mesencephalic branch of posterior cerebral artery
41. Superior cerebellar artery
42. Trigeminal nerve
43. Labyrinthine artery
44. Vestibulocochlear nerve
45. Glossopharyngeal and vagal nerves
46. Posterior inferior cerebellar artery (PICA)
47. Second cervical nerve (dorsal rootlets)
48. Spinal accessory nerve rootlets

PLATE 5.

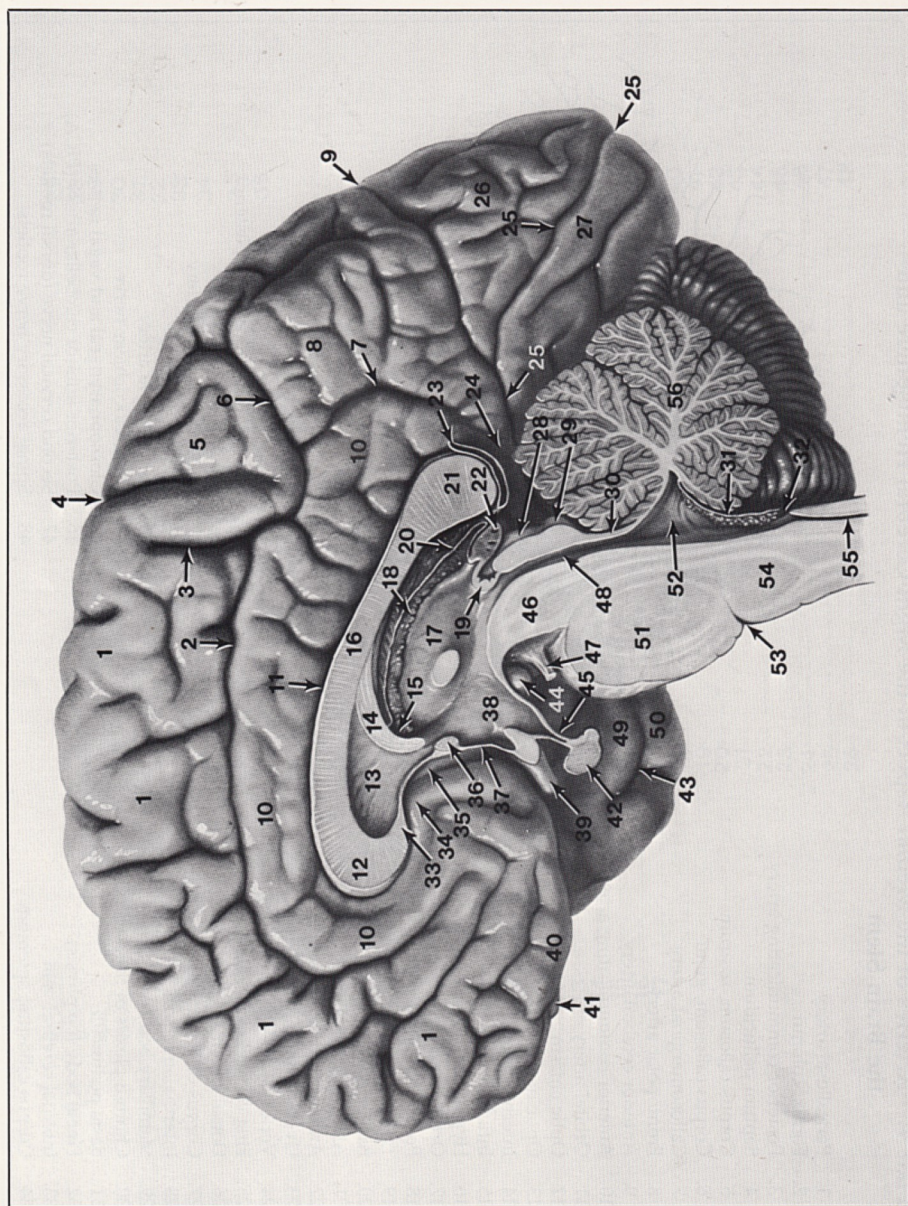


Plate 5. Medial Surface of the Right Hemisphere and the Brain Stem

1. Superior frontal gyrus
2. Cingulate sulcus
3. Paracentral sulcus
4. Central sulcus
5. Paracentral lobule
6. Marginal branch of cingulate sulcus
7. Subparietal sulcus
8. Precuneus
9. Parietooccipital sulcus
10. Cingulate gyrus
11. Callosal sulcus
12. Corpus callosum, genu
13. Septum pellucidum
14. Fornix, column
15. Interventricular foramen
16. Corpus callosum, body
17. Thalamus
18. Choroid plexus of third ventricle
19. Posterior commissure
20. Tela choroidea of third ventricle
21. Corpus callosum, splenium
22. Pineal body
23. Great cerebral vein
24. Isthmus of cingulate gyrus
25. Calcarine sulcus
26. Cuneus
27. Medial occipitotemporal gyrus
28. Superior colliculus
29. Inferior colliculus
30. Superior medullary velum
31. Tela choroidea and choroid plexus of fourth ventricle
32. Medial aperture of fourth ventricle
33. Corpus callosum (rostrum)
34. Subcallosal area
35. Paraterminal gyrus
36. Anterior commissure
37. Lamina terminalis
38. Hypothalamus
39. Optic nerve
40. Gyrus rectus
41. Olfactory bulb
42. Hypophysis
43. Rhinal sulcus
44. Mamillary body
45. Infundibulum of hypophysis
46. Mesencephalon (tegmentum)
47. Oculomotor nerve
48. Cerebral aqueduct
49. Parahippocampal gyrus
50. Lateral occipitotemporal gyrus
51. Pons
52. Fourth ventricle
53. Pontomedullary junction (pontobulbar sulcus)
54. Medulla oblongata
55. Central canal
56. Cerebellum

PLATE 6.

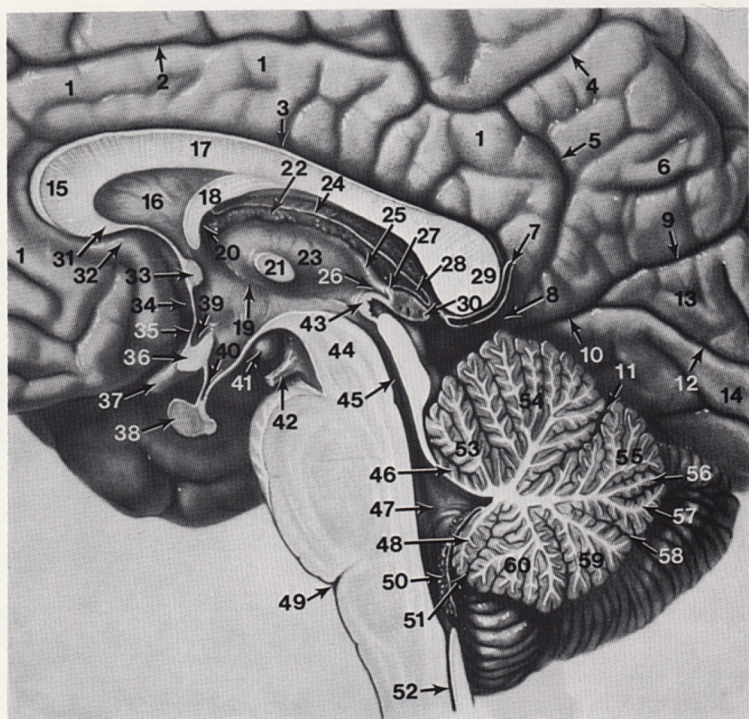


Plate 6. Medial Aspect of the Third Ventricle and the Brain Stem

1. Cingulate gyrus
2. Cingulate sulcus
3. Callosal sulcus
4. Cingulate sulcus (marginal branch)
5. Subparietal sulcus
6. Precuneus
7. Great cerebral vein
8. Isthmus of cingulate gyrus
9. Parietooccipital sulcus
10. Calcarine sulcus
11. Primary fissure
12. Calcarine sulcus
13. Cuneus
14. Medial occipitotemporal gyrus
15. Corpus callosum, genu
16. Septum pellucidum
17. Corpus callosum, body
18. Fornix, column
19. Hypothalamic sulcus
20. Interventricular foramen
21. Interthalamic adhesion
22. Choroid plexus of third ventricle
23. Thalamus
24. Tela choroidea of third ventricle
25. Stria medullaris thalami
26. Pineal recess
27. Habenular commissure
28. Suprapineal recess
29. Corpus callosum (splenium)
30. Pineal gland
31. Corpus callosum (rostrum)
32. Subcallosal area
33. Anterior commissure
34. Paraterminal gyrus
35. Lamina terminalis
36. Optic chiasm
37. Optic nerve
38. Hypophysis
39. Optic recess
40. Infundibular recess
41. Mamillary body
42. Oculomotor nerve
43. Posterior commissure
44. Mesencephalon (tegmentum)
45. Cerebral aqueduct
46. Lingula
47. Fourth ventricle
48. Nodulus
49. Pontobulbar sulcus (pontomedullary junction)
50. Choroid plexus of fourth ventricle
51. Posterolateral fissure
52. Central canal of spinal cord
53. Central lobule
54. Culmen
55. Declive
56. Folium
57. Tuber
58. Prepyramidal fissure
59. Pyramis
60. Uvula

PLATE 7.

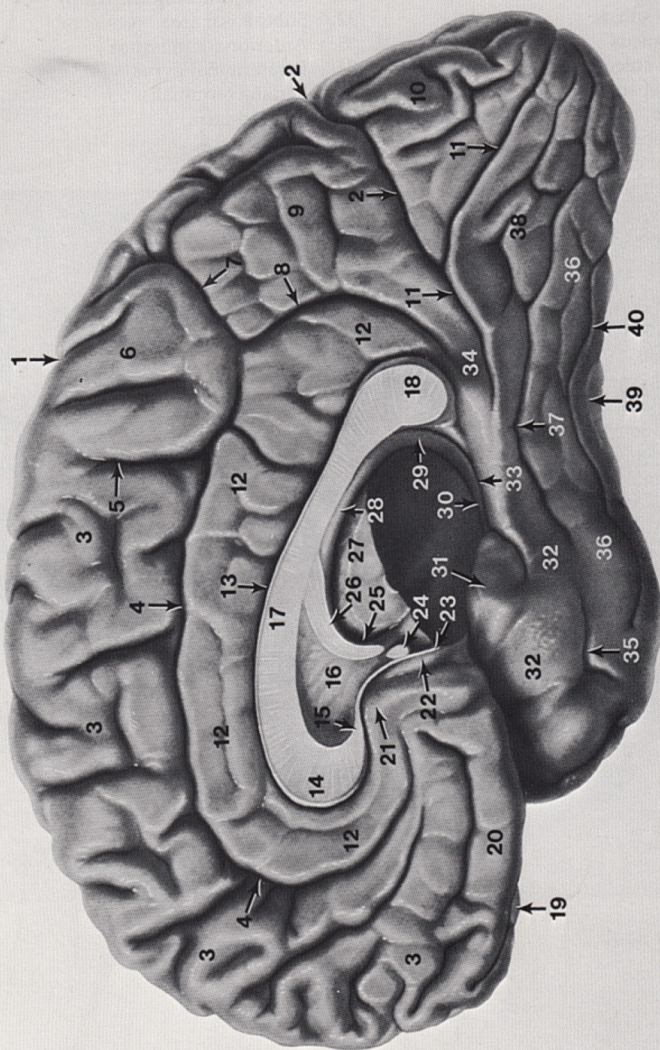


Plate 7. Medial Surface of the Right Hemisphere with the Brain Stem Removed

1. Central sulcus
2. Parietooccipital sulcus
3. Superior frontal gyrus
4. Cingulate sulcus
5. Paracentral sulcus
6. Paracentral lobule
7. Cingulate sulcus, marginal branch
8. Subparietal sulcus
9. Precuneus
10. Cuneus
11. Calcarine sulcus
12. Cingulate gyrus
13. Callosal sulcus
14. Corpus callosum, genu
15. Corpus callosum, rostrum
16. Septum pellucidum
17. Corpus callosum, body
18. Corpus callosum, splenium
19. Olfactory bulb
20. Gyrus rectus
21. Subcallosal area
22. Paraterminal gyrus
23. Lamina terminalis
24. Anterior commissure
25. Interventricular foramen
26. Fornix, column
27. Thalamus
28. Fornix, body
29. Fornix, crus
30. Fornix, fimbria
31. Uncus
32. Parahippocampal gyrus
33. Hippocampal sulcus
34. Isthmus of cingulate gyrus
35. Rhinal sulcus
36. Lateral occipitotemporal gyrus
37. Collateral sulcus
38. Medial occipitotemporal gyrus
39. Inferior temporal gyrus
40. Inferior temporal sulcus

PLATE 8.

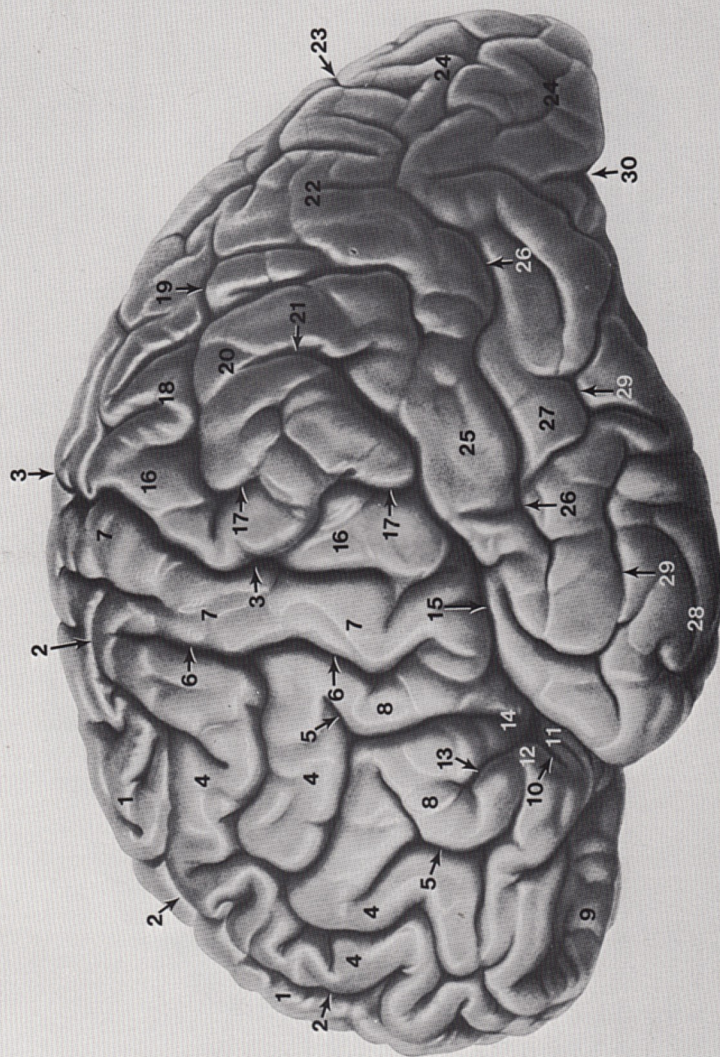
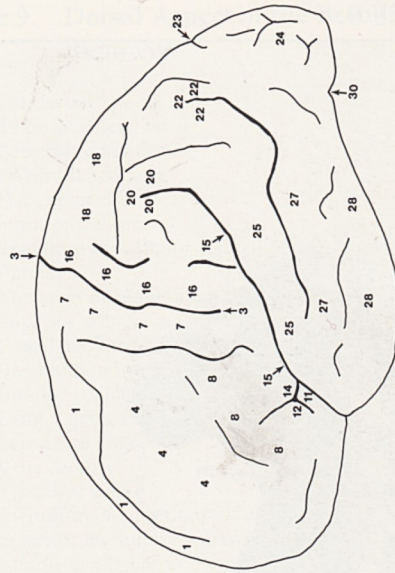


Plate 8. Lateral Convex Surface of the Left Hemisphere



1. Superior frontal gyrus
2. Superior frontal sulcus
3. Central sulcus
4. Middle frontal gyrus
5. Inferior frontal sulcus
6. Precentral sulcus
7. Precentral gyrus
8. Inferior frontal gyrus
9. Orbital gyri
10. Anterior ramus of lateral sulcus
11. Pars orbitalis of inferior frontal gyrus
12. Pars triangularis of inferior frontal gyrus
13. Ascending ramus of lateral sulcus
14. Pars opercularis of inferior frontal gyrus
15. Lateral sulcus
16. Postcentral gyrus
17. Postcentral sulcus
18. Superior parietal lobule
19. Intraparietal sulcus
20. Supramarginal gyrus
21. Lateral sulcus (ramus posterior)
22. Angular gyrus
23. Parietooccipital sulcus
24. Occipital gyri

25. Superior temporal gyrus
26. Superior temporal sulcus
27. Middle temporal gyrus
28. Inferior temporal gyrus
29. Medial temporal sulcus
30. Preoccipital incisure (notch)

PLATE 9.

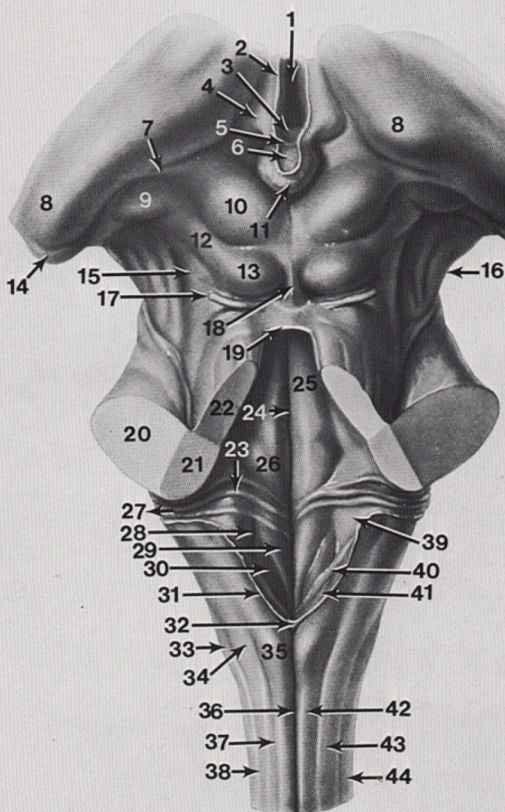


Plate 9. Dorsal Aspect of the Brain Stem with the Cerebellum Removed

1. Third ventricle
2. Tenia ventriculi tertii
3. Posterior commissure
4. Habenular trigone
5. Habenular commissure
6. Suprapineal recess
7. Brachium of superior colliculus
8. Pulvinar
9. Medial geniculate body
10. Superior colliculus
11. Pineal body (epiphysis)
12. Brachium of inferior colliculus
13. Inferior colliculus
14. Lateral geniculate body
15. Lemniscal trigone
16. Crus cerebri
17. Trochlear nerve
18. Frenulum of superior medullary velum
19. Superior medullary velum
20. Middle cerebellar peduncle
21. Inferior cerebellar peduncle
22. Superior cerebellar peduncle
23. Striae medullares of fourth ventricle
24. Dorsal median sulcus
25. Median eminence of fourth ventricle
26. Facial colliculus
27. Lateral aperture of fourth ventricle
28. Sulcus limitans
29. Hypoglossal trigone
30. Vagal trigone
31. Tenia of fourth ventricle
32. Obex
33. Tuberculum cinereum
34. Tuberculum nuclei cuneati (cuneate tubercle)
35. Tuberculum nuclei gracilis (gracile tubercle)
36. Dorsal median sulcus
37. Dorsal intermediate sulcus
38. Dorsal lateral sulcus
39. Area vestibularis
40. Stria separans
41. Area postrema
42. Fasciculus gracilis
43. Fasciculus cuneatus
44. Lateral funiculus

PLATE 10.

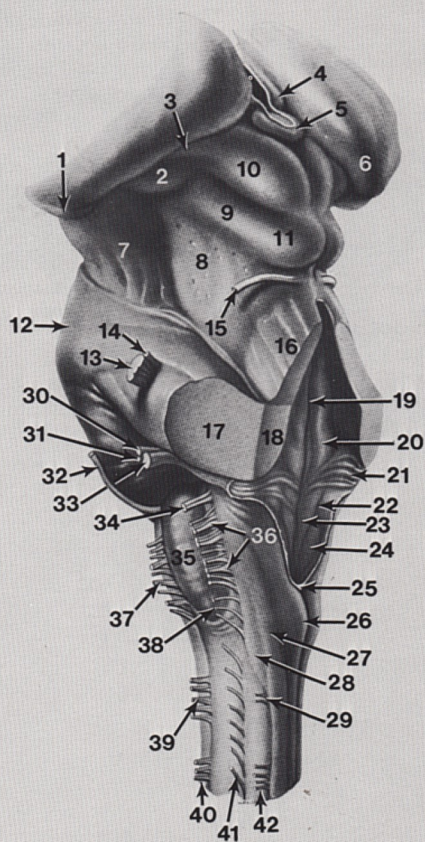


Plate 10. Dorsal Lateral Aspect of the Brain Stem

1. Lateral geniculate body
2. Medial geniculate body
3. Brachium of superior colliculus
4. Habenular trigone
5. Pineal body
6. Pulvinar
7. Crus cerebri
8. Lemniscal trigone
9. Brachium of inferior colliculus
10. Superior colliculus
11. Inferior colliculus
12. Pons
13. Trigeminal nerve, sensory root
14. Trigeminal nerve, motor root
15. Trochlear nerve
16. Superior cerebellar peduncle
17. Middle cerebellar peduncle
18. Inferior cerebellar peduncle
19. Dorsal median sulcus
20. Facial colliculus
21. Striae medulares of fourth ventricle
22. Sulcus limitans
23. Hypoglossal trigone
24. Vagal trigone
25. Obex
26. Gracile tubercle (tuberculum nuclei gracilis)
27. Cuneate tubercle (tuberculum nuclei cuneati)
28. Tuberculum cinereum
29. First cervical nerve (dorsal rootlets)
30. Facial nerve
31. Intermediate nerve CN VII
32. Abducent nerve
33. Vestibulocochlear nerve
34. Glossopharyngeal nerve
35. Olive
36. Vagal nerve
37. Hypoglossal nerve
38. Accessory nerve (cranial division)
39. First cervical nerve (ventral rootlets)
40. Second cervical nerve (ventral rootlets)
41. Accessory nerve (spinal division)
42. Second cervical nerve (dorsal rootlets)

PLATE 11.



Plate 11. Spinal Cord at Lower Sacral Level

1. Cauda equina
2. Dorsal median sulcus
3. Septomarginal fasciculus
4. Fasciculus gracilis
5. Dorsal rootlet
6. Medial root entry zone
7. Dorsomarginal nucleus
8. Dorsolateral tract (Lissauer) and lateral root entry zone
9. Substantia gelatinosa of dorsal horn
10. Nucleus proprius of dorsal horn
11. Central canal with central gray matter
12. Ventral white commissure
13. Ventral horn (column)
14. Lateral spinothalamic tract
15. Lateral corticospinal tract
16. Ventral median fissure
17. Ventral spinal artery and vein in pia mater
18. Dura mater
19. Arachnoid
20. Ventral spinothalamic tract
21. Medullary reticulospinal tract
22. Pontine reticulospinal tract
23. Vestibulospinal tract
24. Spinospinal tract (fasciculus proprius)

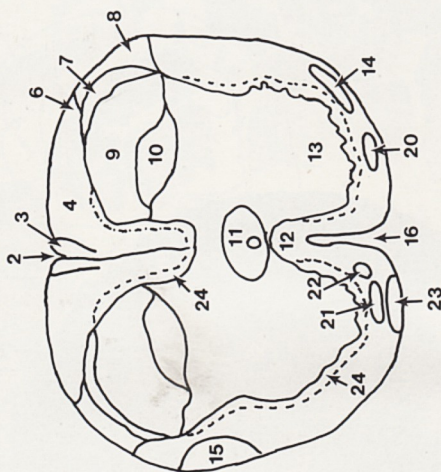


PLATE 12.

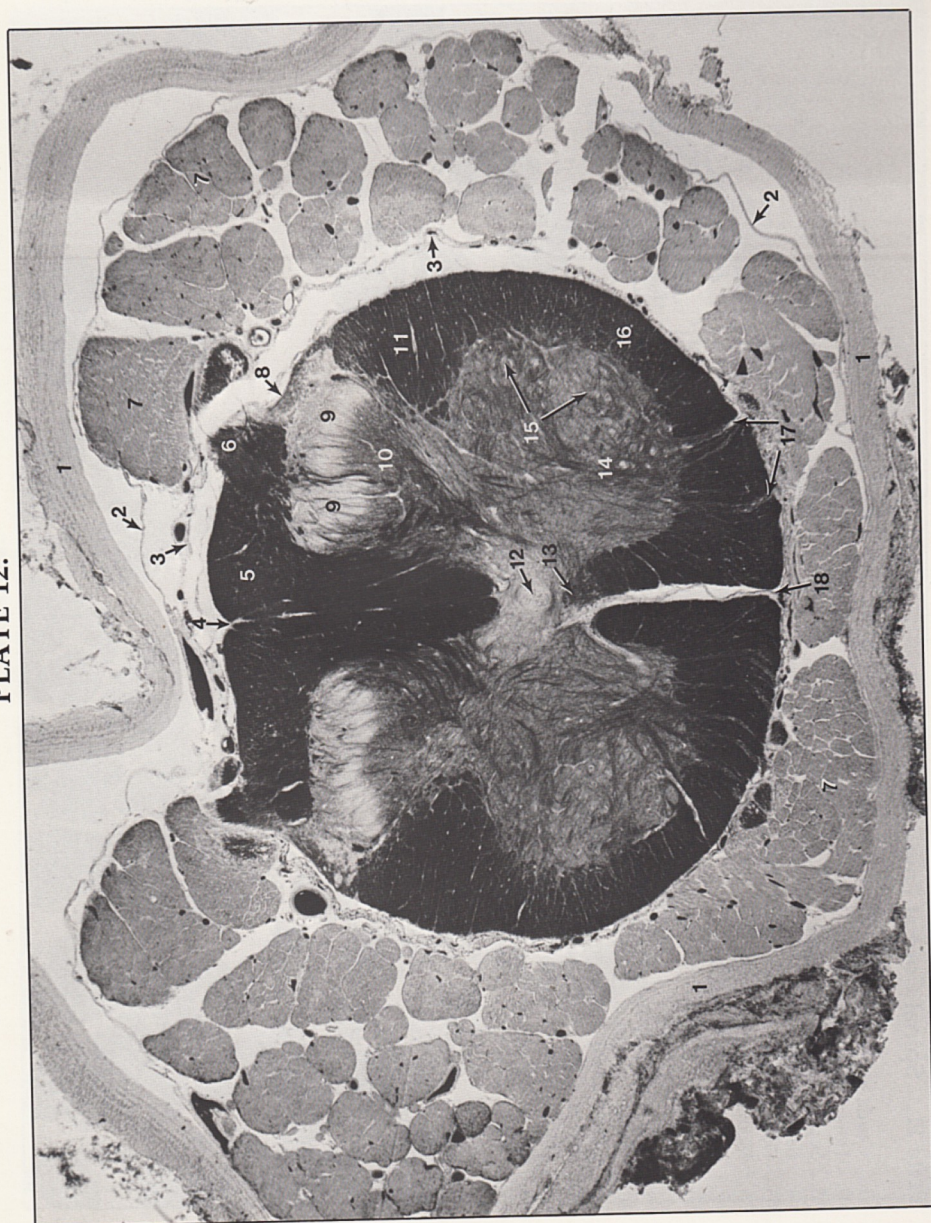
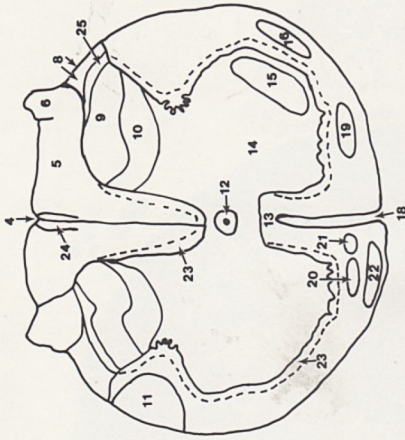


Plate 12. Spinal Cord at Midsacral Level

1. Dura mater
2. Arachnoid
3. Pia mater (dehiscent)
4. Dorsal median sulcus
5. Fasciculus gracilis
6. Dorsal root
7. Cauda equina
8. Dorsolateral tract (Lissauer) and dorsolateral sulcus
9. Substantia gelatinosa of dorsal horn
10. Nucleus proprius of dorsal horn
11. Lateral corticospinal tract
12. Central canal
13. Ventral white commissure
14. Ventral horn (column)
15. Lateral motor nuclei
16. Lateral spinothalamic tract
17. Ventral root fascicles of spinal nerve
18. Ventral median fissure
19. Ventral spinothalamic tract
20. Medullary reticulospinal tract
21. Pontine reticulospinal tract



22. Vestibulospinal tract
23. Spinospinal tract
24. Fasciculus septomarginalis
25. Dorsomarginal nucleus

PLATE 13.

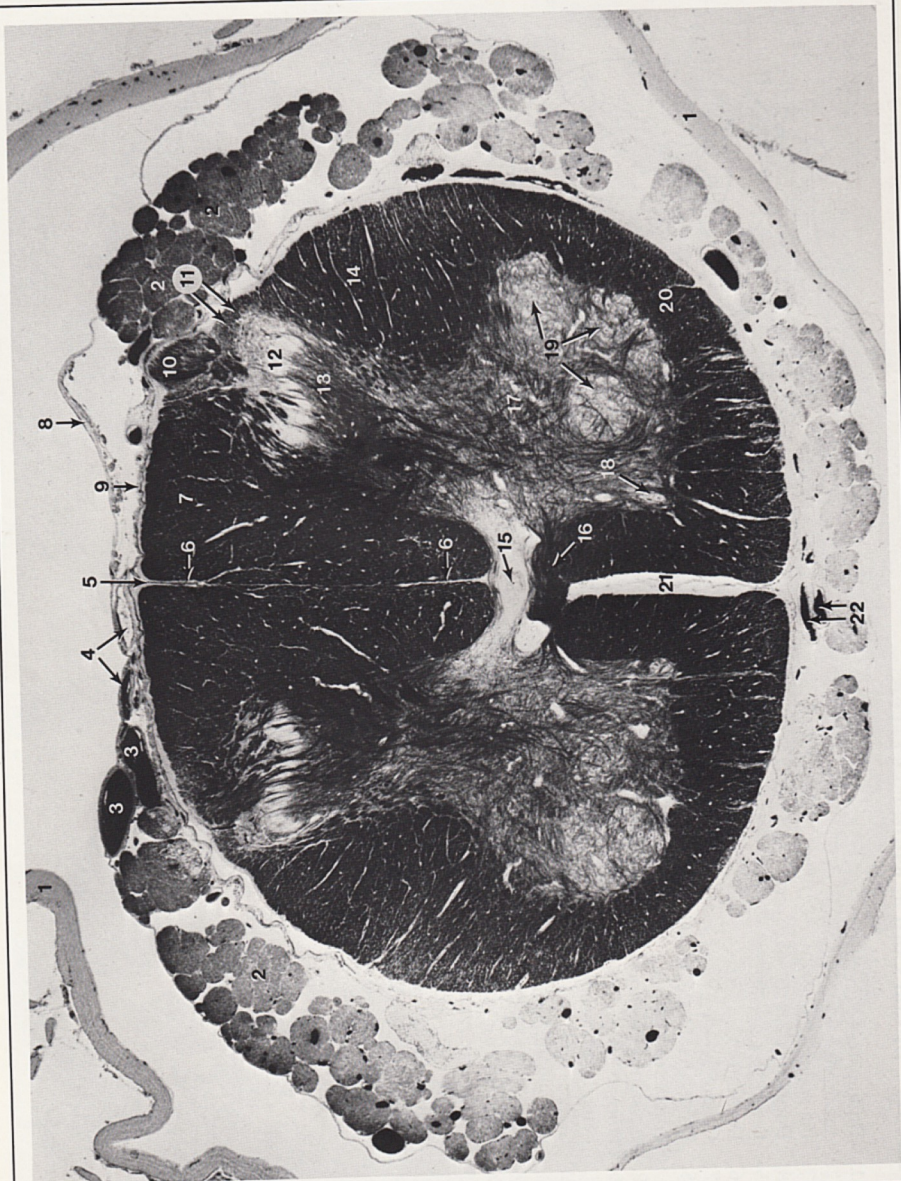
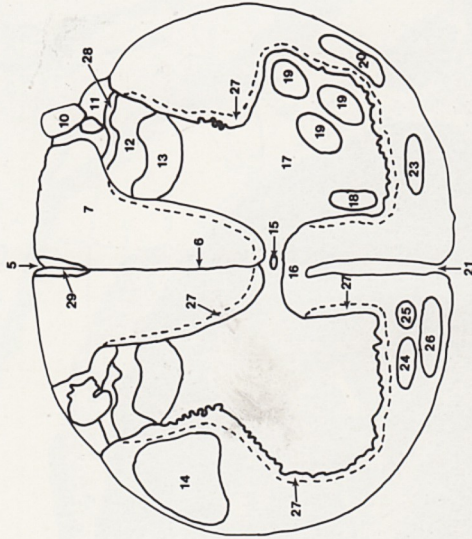


Plate 13. Spinal Cord at Upper Sacral Level

1. Dura mater
2. Cauda equina
3. Blood vessels within subarachnoid space
4. Dorsal spinal artery and vein
5. Dorsal median sulcus
6. Dorsal median septum
7. Fasciculus gracilis
8. Arachnoid
9. Pia mater
10. Dorsal root
11. Dorsolateral tract (Lissauer)
12. Substantia gelatinosa of dorsal horn
13. Nucleus proprius of dorsal horn
14. Lateral corticospinal tract
15. Central canal
16. Ventral white commissure
17. Ventral horn
18. Medial motor nucleus
19. Lateral motor nuclei
20. Lateral spinothalamic tract
21. Ventral median fissure
22. Ventral spinal artery and vein
23. Ventral spinothalamic tract
24. Medullary reticulospinal tract
25. Pontine reticulospinal tract



26. Vestibulospinal tract
27. Spinothalamic tract
28. Dorsomarginal nucleus
29. Fasciculus septomarginalis

PLATE 14.

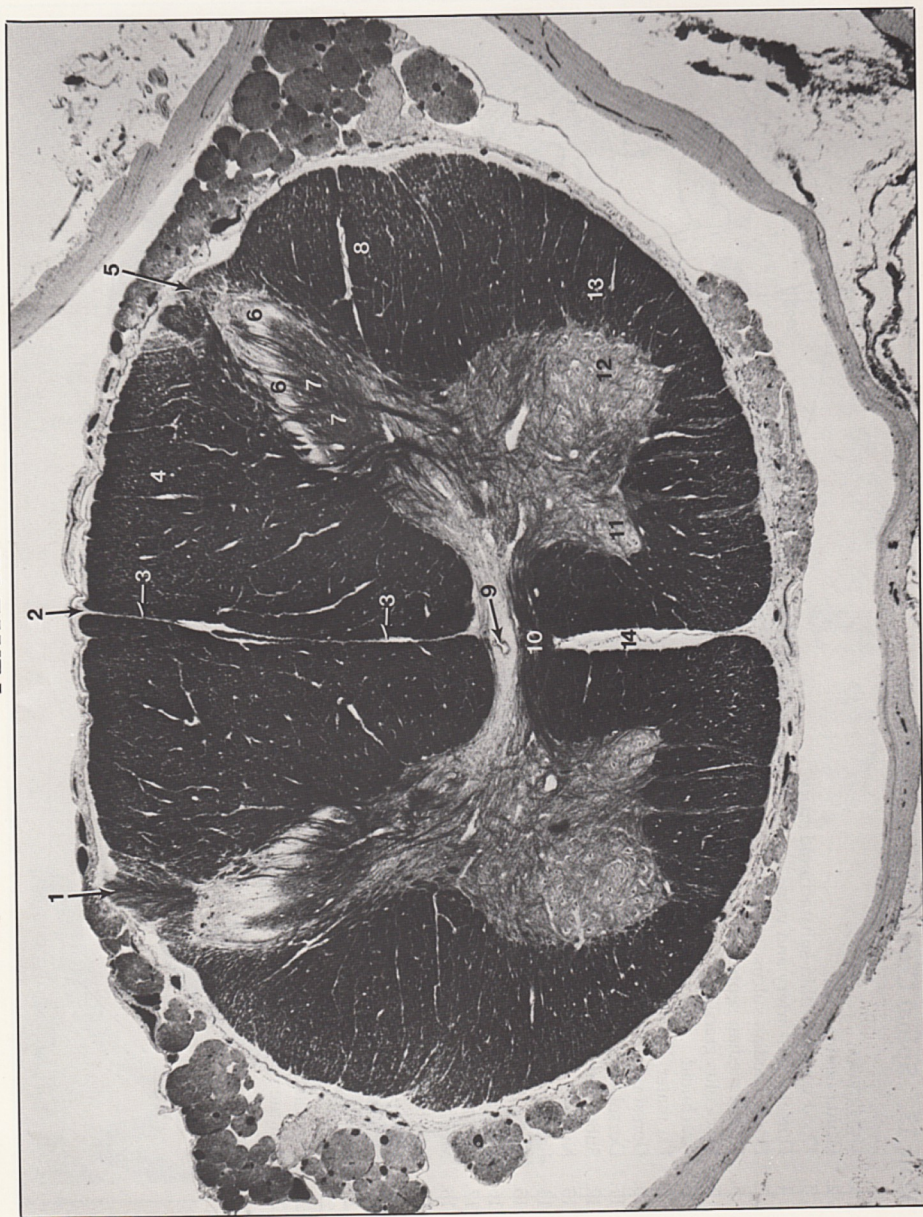


Plate 14. Spinal Cord at Lower Lumbar Level

1. Dorsal root
2. Dorsal median sulcus
3. Dorsal median septum
4. Fasciculus gracilis
5. Dorsolateral tract (Lissauer)
6. Substantia gelatinosa
7. Nucleus proprius
8. Lateral corticospinal tract
9. Central canal
10. Ventral white commissure
11. Medial motor nucleus
12. Lateral motor nuclei
13. Lateral spinothalamic tract
14. Ventral median fissure
15. Ventral spinothalamic tract
16. Ventral corticospinal tract
17. Rubrospinal tract
18. Medullary reticulospinal tract
19. Pontine reticulospinal tract
20. Vestibulospinal tract
21. Spinothalamic tract
22. Fasciculus septomarginalis
23. Dorsomarginal nucleus

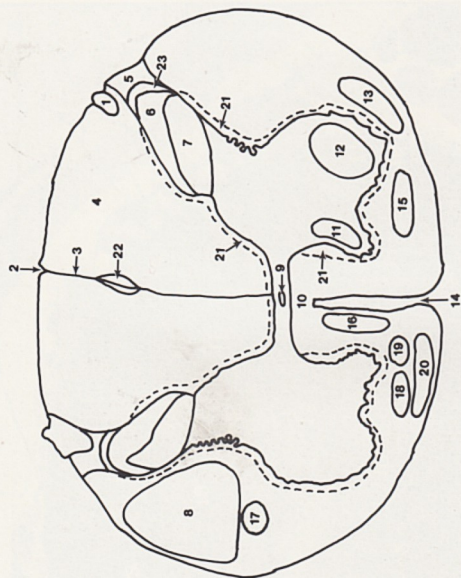


PLATE 15.

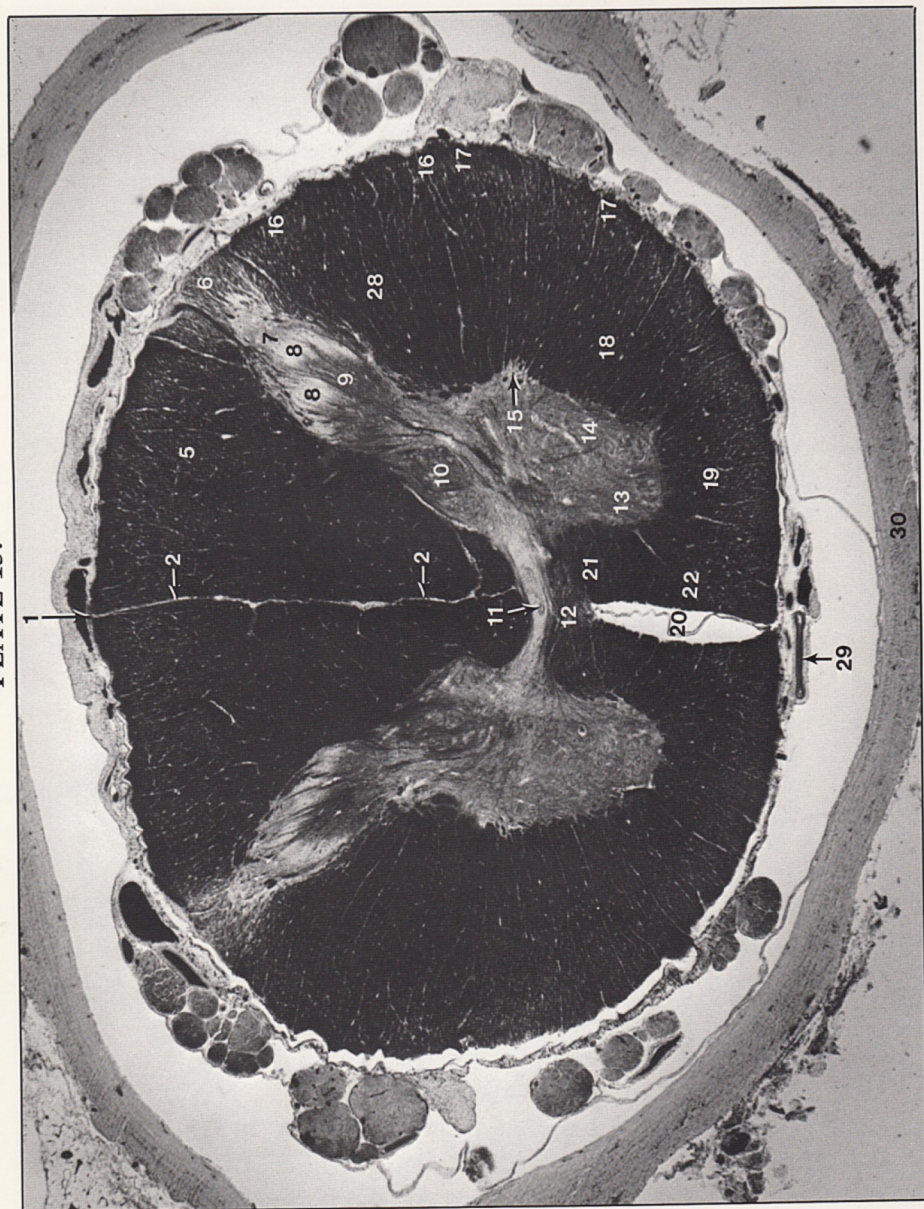
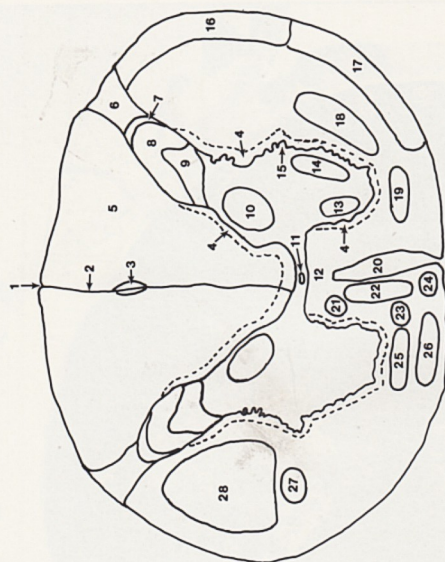


Plate 15. Spinal Cord at Upper Lumbar Level



1. Dorsal median sulcus
2. Dorsal median septum
3. Fasciculus septomarginalis
4. Spinothalamic tract
5. Fasciculus gracilis
6. Dorsolateral tract (Lissauer)
7. Nucleus dorsomarginalis
8. Substantia gelatinosa
9. Nucleus proprius
10. Nucleus dorsalis (Clarke)
11. Central canal
12. Ventral white commissure
13. Medial motor nucleus
14. Lateral motor nuclei
15. Intermediolateral nucleus
16. Dorsal spinocerebellar tract (DSCT)
17. Ventral spinocerebellar tract (VSCT)
18. Lateral spinothalamic tract
19. Ventral spinothalamic tract
20. Ventral median fissure
21. Medial longitudinal fasciculus (MLF)
22. Ventral corticospinal tract
23. Pontine reticulospinal tract
24. Tectospinal tract
25. Medullary reticulospinal tract

26. Vestibulospinal tract
27. Rubrospinal tract
28. Lateral corticospinal tract
29. Ventral spinal artery
30. Dura

PLATE 16.

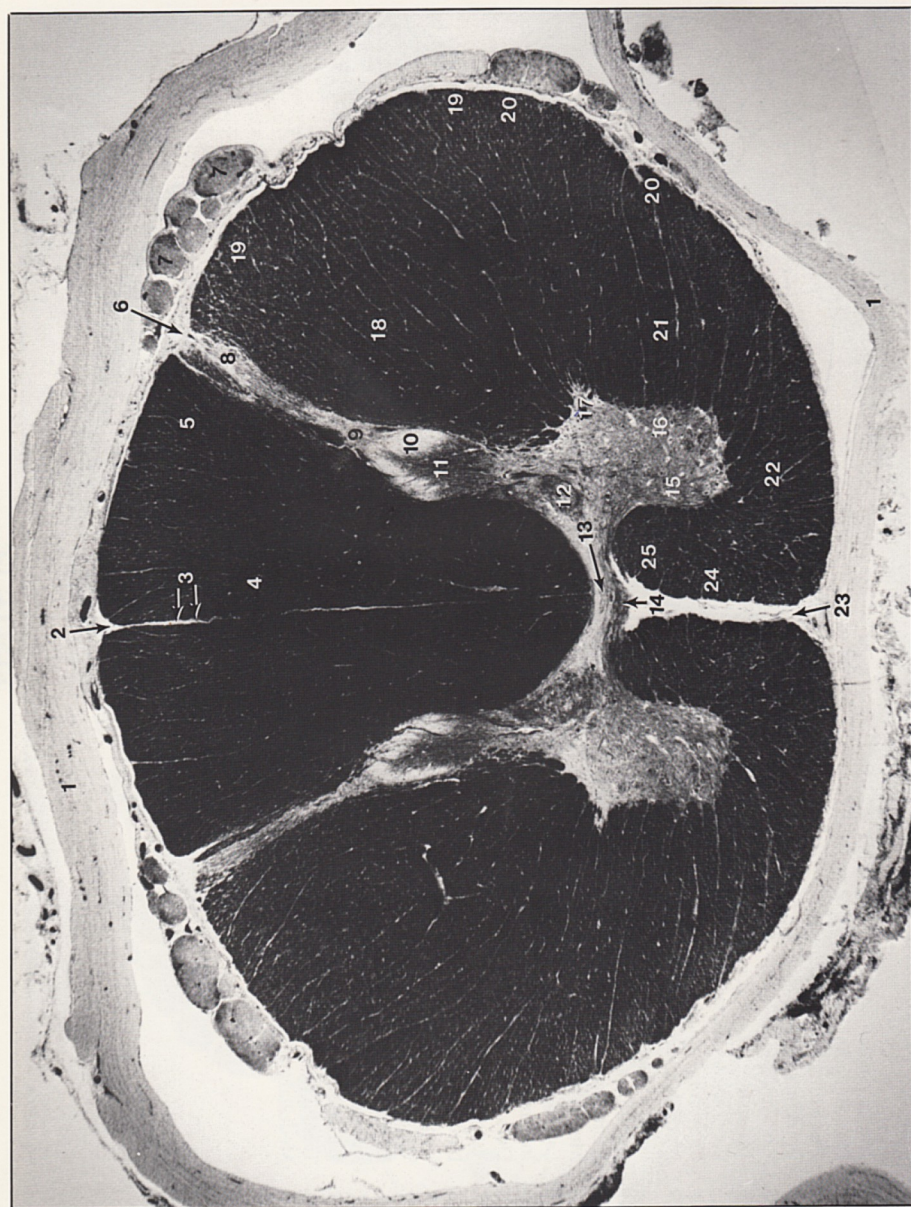
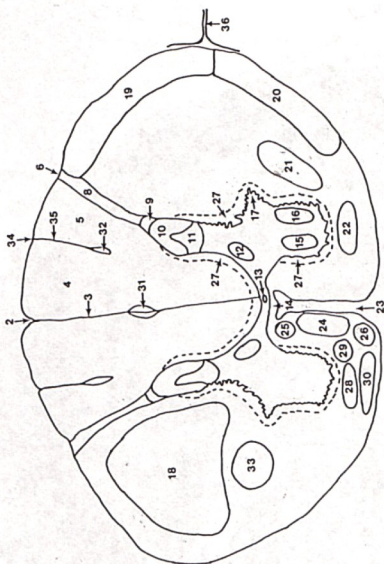


Plate 16. Spinal Cord at Midthoracic Level

1. Dura mater
2. Dorsal median sulcus
3. Dorsal median septum
4. Fasciculus gracilis
5. Fasciculus cuneatus
6. Dorsolateral sulcus
7. Dorsal rootlets
8. Dorsolateral tract (Lissauer)
9. Dorsomarginal nucleus
10. Substantia gelatinosa
11. Nucleus proprius
12. Nucleus dorsalis (Clarke's column)
13. Central canal
14. Ventral white commissure
15. Medial motor nucleus
16. Lateral motor nuclei
17. Intermediolateral nucleus and lateral horn
18. Lateral corticospinal tract
19. Dorsal spinocerebellar tract (DSCT)
20. Ventral spinocerebellar tract (VSCT)
21. Lateral spinothalamic tract
22. Ventral spinothalamic tract
23. Ventral median fissure
24. Ventral corticospinal tract
25. Medial longitudinal fasciculus (MLF)
26. Tectospinal tract
27. Spinothalamic tract



28. Medullary reticulospinal tract
29. Pontine reticulospinal tract
30. Vestibulospinal tract
31. Fasciculus septomarginalis
32. Fasciculus interfascicularis
33. Rubrospinal tract
34. Dorsal intermediate sulcus
35. Dorsal intermediate septum
36. Denticulate ligament

PLATE 17.

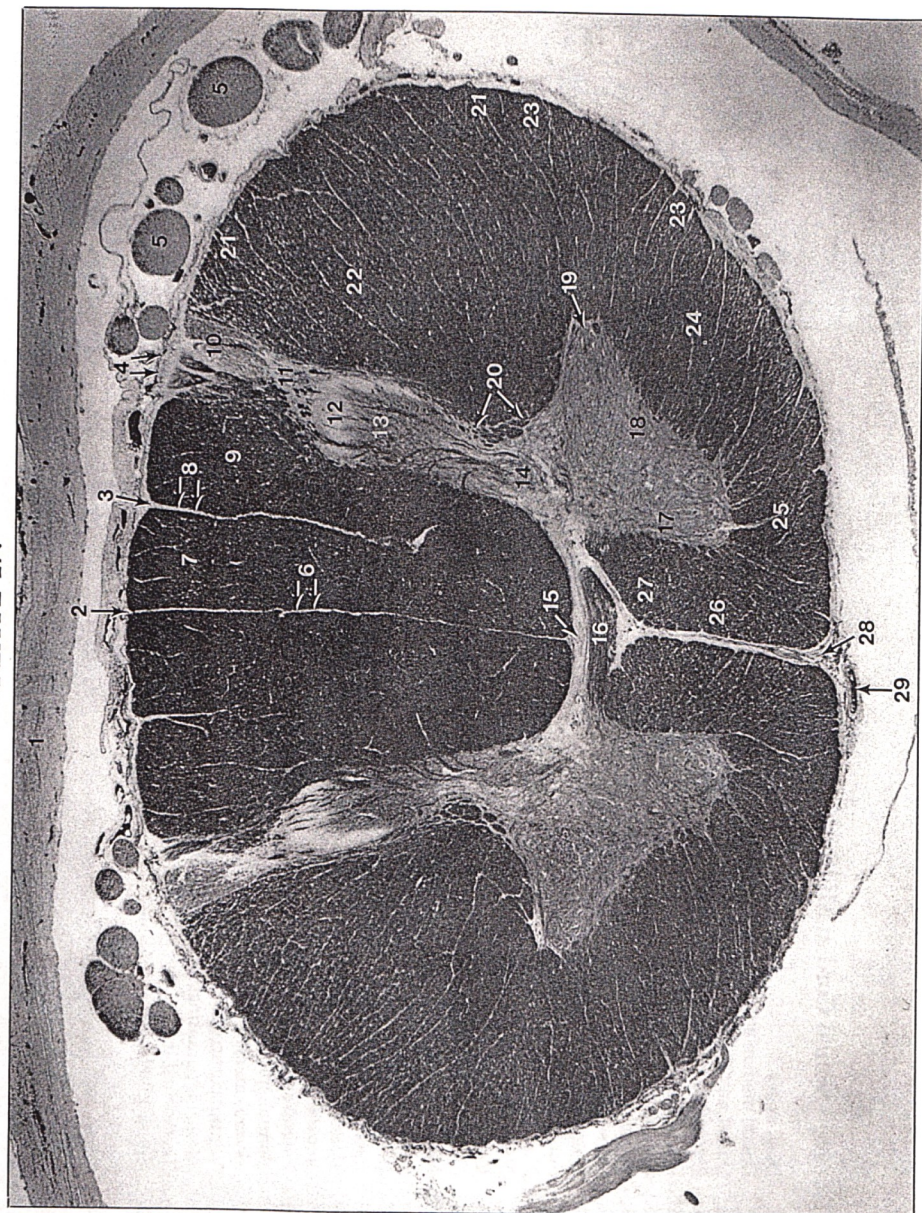
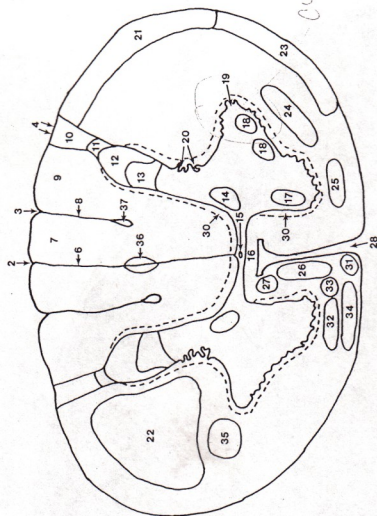


Plate 17. Spinal Cord at Lower Cervical Level (C-8)

1. Dura mater
2. Dorsal median sulcus
3. Dorsal intermediate sulcus
4. Dorsolateral sulcus
5. Dorsal rootlets
6. Dorsal median septum
7. Fasciculus gracilis
8. Dorsal intermediate septum
9. Fasciculus cuneatus
10. Dorsolateral tract (Lissauer)
11. Dorsomarginal nucleus
12. Substantia gelatinosa
13. Nucleus proprius
14. Nucleus dorsalis (Clarke's column)
15. Central canal
16. Ventral white commissure
17. Medial motor nucleus
18. Lateral motor nuclei
19. Intermediolateral nucleus and lateral horn
20. Reticular process
21. Dorsal spinocerebellar tract (DSCT)
22. Lateral corticospinal tract
23. Ventral spinocerebellar tract (VSCT)
24. Lateral spinothalamic tract
25. Ventral spinothalamic tract
26. Ventral corticospinal tract
27. Medial longitudinal fasciculus (MLF)



28. Ventral median fissure
29. Ventral spinal artery
30. Spinothalamic tract
31. Tectospinal tract
32. Medullary reticulospinal tract
33. Pontine reticulospinal tract
34. Vestibulospinal tract
35. Rubrospinal tract
36. Fasciculus septomarginalis
37. Fasciculus interfascicularis

PLA 18.

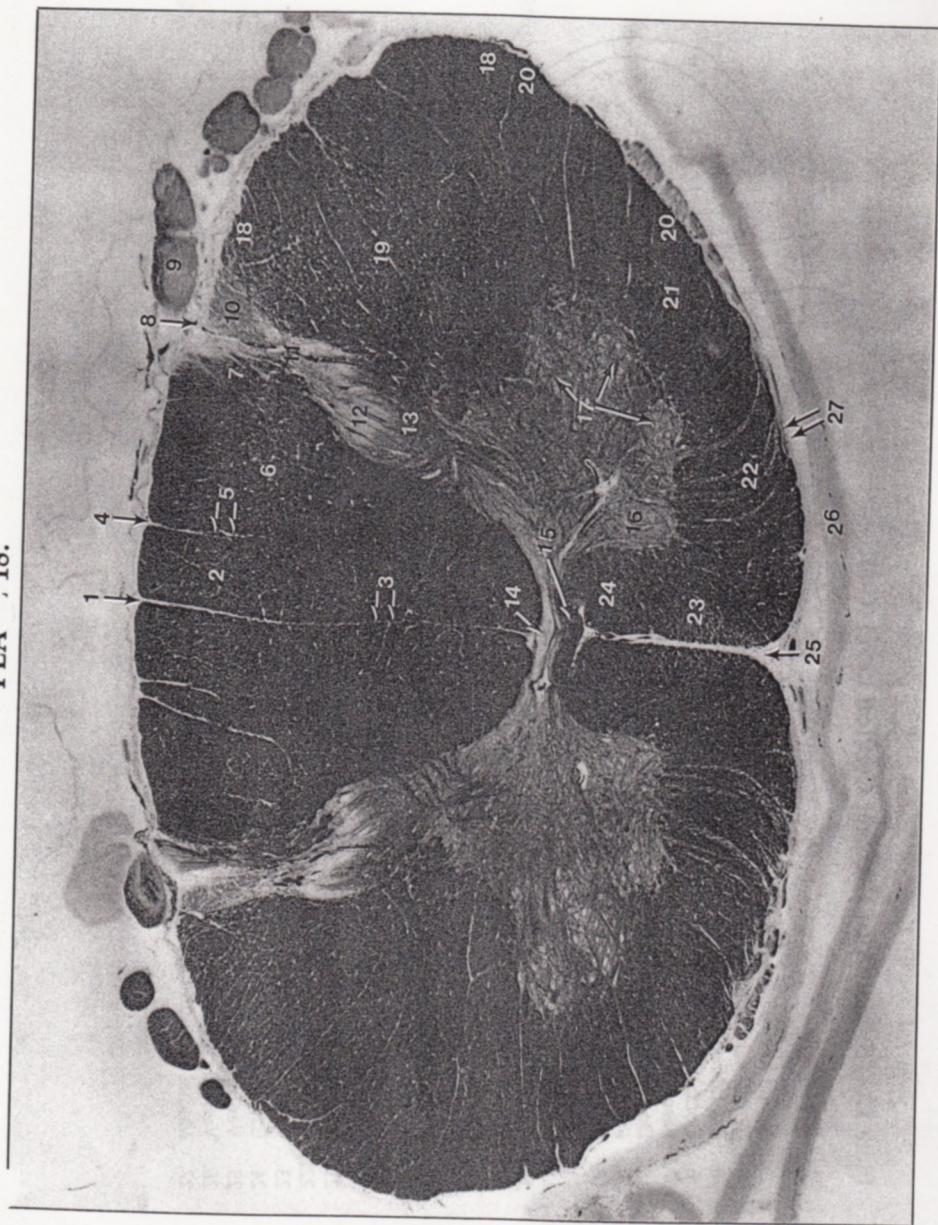
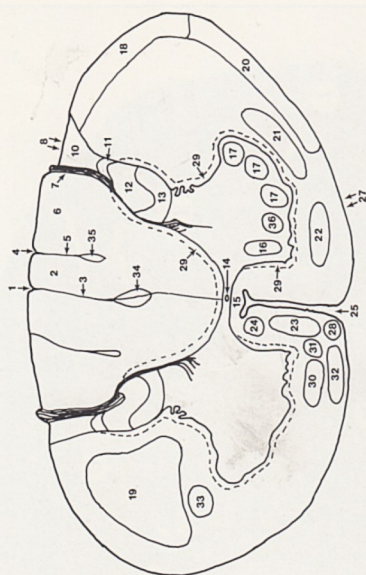


Plate 18. Spinal Cord at Midcervical Level



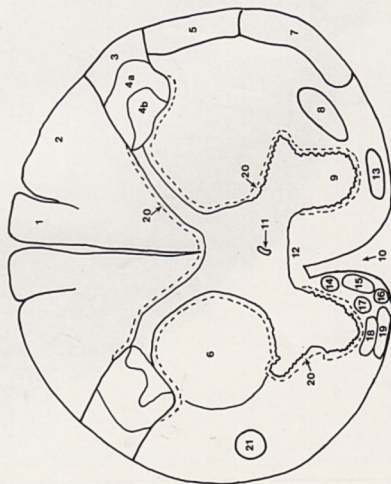
1. Dorsal median sulcus
2. Fasciculus gracilis
3. Dorsal median septum
4. Dorsal intermediate sulcus
5. Dorsal intermediate septum
6. Fasciculus cuneatus
7. Medial root entry zone
8. Dorsolateral sulcus
9. Dorsal root
10. Dorsolateral tract (Lissauer)
11. Dorsomarginal nucleus
12. Substantia gelatinosa
13. Nucleus proprius
14. Central canal
15. Ventral white commissure
16. Medial motor nucleus
17. Lateral motor nuclei (including spinal accessory nucleus)
18. Dorsal spinocerebellar tract (DSCT)
19. Lateral corticospinal tract
20. Ventral spinocerebellar tract (VSCT)
21. Lateral spinothalamic tract
22. Ventral spinothalamic tract
23. Ventral corticospinal tract
24. Medial longitudinal fasciculus (MLF)
25. Ventral median fissure
26. Dura mater
27. Ventral lateral sulcus
28. Tectospinal tract
29. Spinospinal tract
30. Medullary reticulospinal tract
31. Pontine reticulospinal tract
32. Vestibulospinal tract
33. Rubrospinal tract
34. Fasciculus septomarginalis
35. Fasciculus interfascicularis
36. Phrenic nucleus (C-3-C-5)

PLATE 19.



Plate 19. Spinal Cord at the Level of C-1

1. Fasciculus gracilis
2. Fasciculus cuneatus
3. Spinal trigeminal tract
- 4a. Spinal trigeminal nucleus (pars gelatinosa)
- 4b. Spinal trigeminal nucleus (pars magnocellularis)
5. Dorsal spinocerebellar tract
6. Lateral corticospinal tract
7. Ventral spinocerebellar tract
8. Lateral spinothalamic tract
9. Ventral horn (column)
10. Ventral median fissure
11. Central canal
12. Ventral white commissure
13. Ventral spinothalamic tract
14. Medial longitudinal fasciculus (MLF)
15. Ventral corticospinal tract



16. Tectospinal tract
17. Pontine reticulospinal tract
18. Medullary reticulospinal tract
19. Vestibulospinal tract
20. Spinospinal tract
21. Rubrospinal tract



PLATE 20.

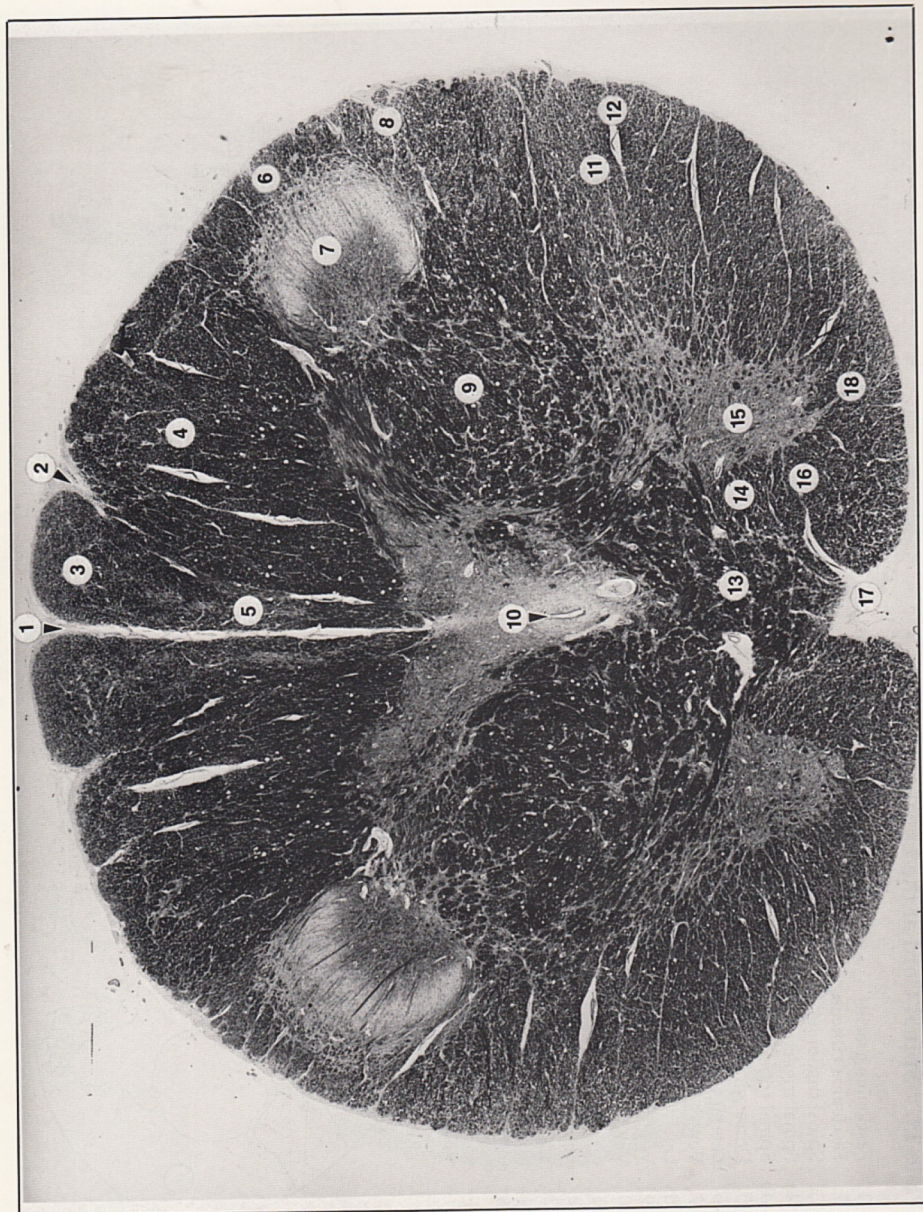


Plate 20. Medulla Oblongata at the Caudal Level of the Pyramidal Decussation (Transition from Spinal Cord to Medulla Oblongata)

1. Dorsal median sulcus
2. Dorsal intermediate sulcus
3. Fasciculus gracilis
4. Fasciculus cuneatus
5. Nucleus gracilis
6. Spinal trigeminal tract
7. Spinal trigeminal nucleus
8. Dorsal spinocerebellar tract (DSCT)
9. Lateral corticospinal tract
10. Central canal
11. Lateral spinothalamic tract
12. Ventral spinocerebellar tract (VSCT)
13. Pyramidal decussation (decussation of lateral corticospinal tract)
14. Medial longitudinal fasciculus (MLF)
15. Ventral horn (column) (spinal accessory nucleus)
16. Ventral corticospinal tract
17. Ventral median fissure
18. Ventral spinothalamic tract

