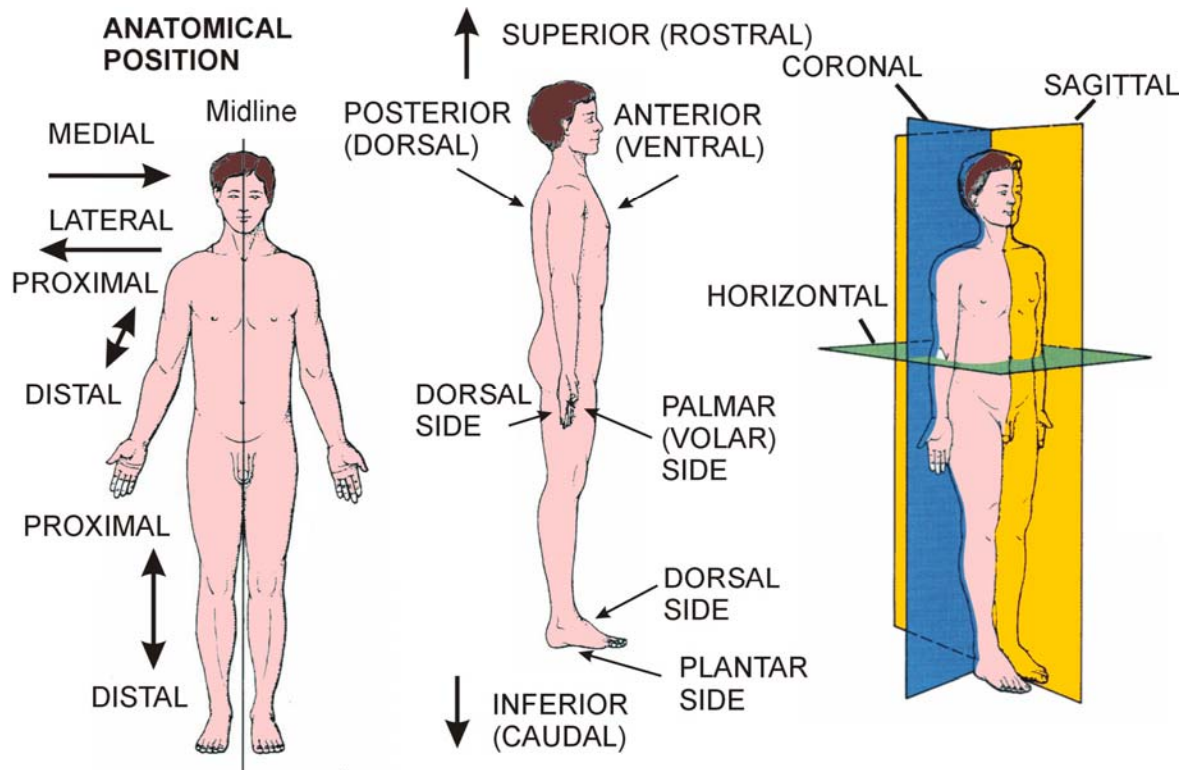


INTRODUCTION TO GROSS ANATOMY AND NERVOUS SYSTEM: PART 1 - ANATOMY: TERMINOLOGY OF ANATOMICAL POSITION AND PLANES

©2023zillmusom



ANATOMICAL POSITION - Standing erect, feet together, face forward, arms at side, palms forward.

ANATOMICAL TERMS

MEDIAL - toward midline
 LATERAL - away from midline
 ANTERIOR = VENTRAL - front of body (nose is anterior)
 POSTERIOR = DORSAL - back of body
 SUPERIOR (ROSTRAL) - toward top of head
 INFERIOR (CAUDAL) - toward bottom of feet
 PROXIMAL - closer to trunk or origin of structure
 DISTAL - farther from trunk or origin of structure
 PALMAR (VOLAR) SURFACE OF HAND - palm side
 DORSAL SURFACE OF HAND - back side of hand
 PLANTAR SURFACE OF FOOT - sole of foot
 DORSAL SURFACE OF FOOT - top of foot

ANATOMICAL PLANES

SAGITTAL PLANE - divides body into left right parts
 MEDIAL SAGITTAL PLANE - divides body in left right halves
 CORONAL (FRONTAL) PLANE - divides body into front and back parts
HORIZONTAL (TRANSVERSE) PLANE - * TYPICAL PLANE OF CT AND MRI IMAGES - plane perpendicular to body long axis; divides body in top and bottom parts