

**PROSECTIONS: SPINAL  
CORD  
2024**

# SPINAL CORD

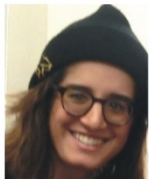
88

## PROSECTED PICTURES: SPINAL CORD AND MENINGES

### ORIENTATION



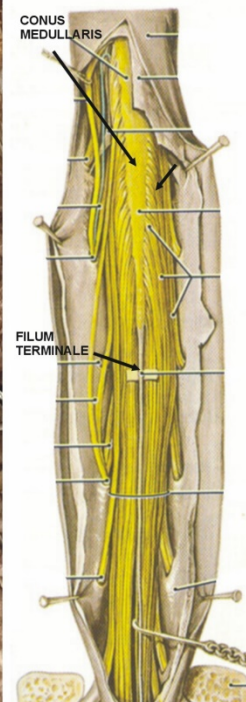
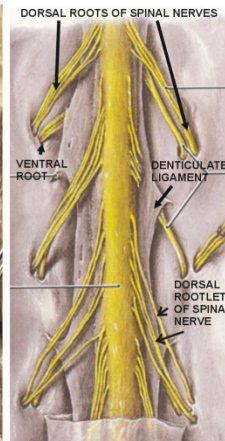
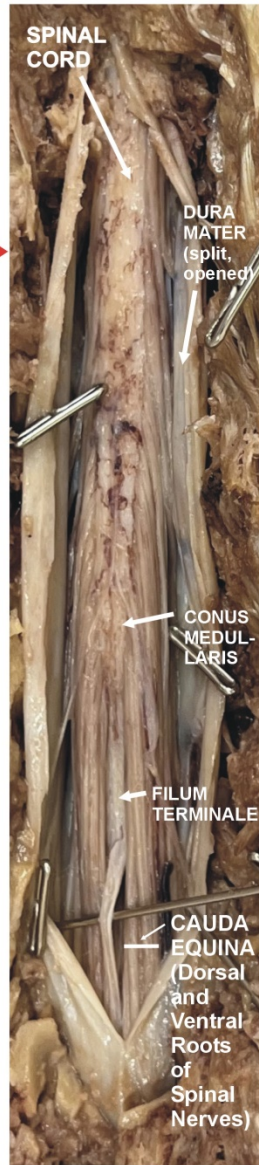
PROSECTED BY JCESOM STUDENTS, 2022



SUMAIYA CHAUDHRY



SENECA WILLIAMS



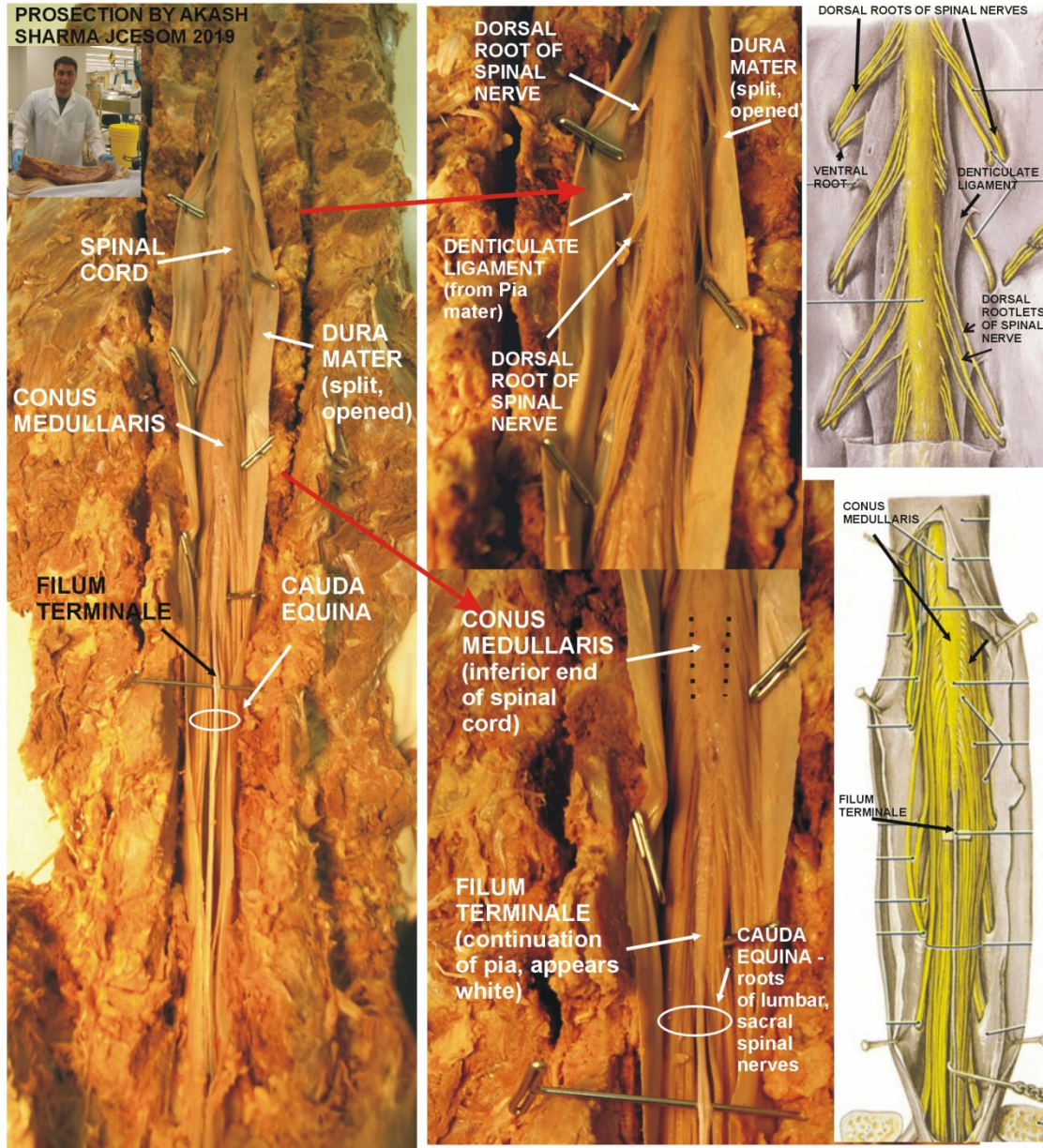
## PROSECTED 88

# SPINAL CORD

44

## PROSECTIO PICTURES: SPINAL CORD AND MENINGES

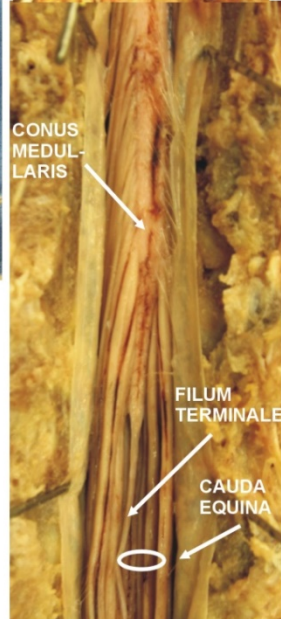
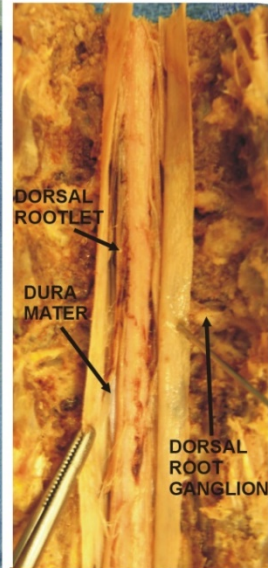
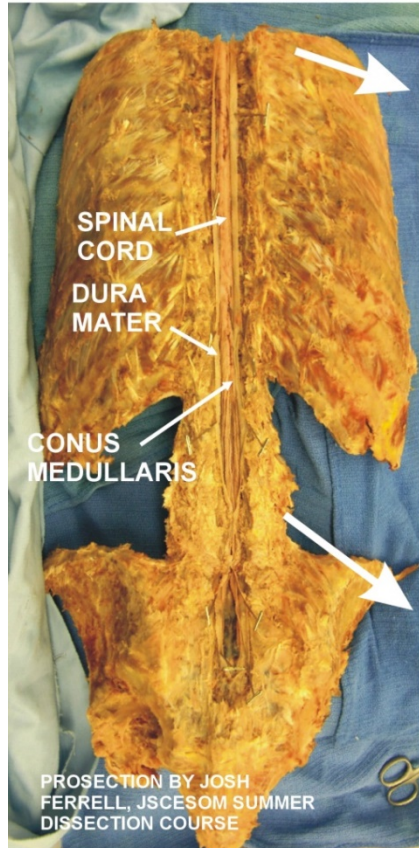
## PROSECTIO 44



# SPINAL CORD

98

ALL VERTEBRAL LAMINAE, SPINES AND  
OVERLYING BACK MUSCLES REMOVED

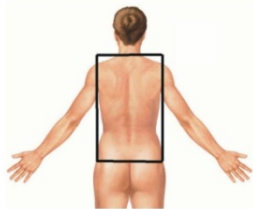


- SPINAL CORD (WITH OVERLYING PIA MATER)
- DURA MATER
- DORSAL ROOTLET
- CONUS MEDULLARIS
- FILUM TERMINALE
- DORSAL ROOT GANGLION
- CAUDA EQUINA

PROSECTED PICTURES:  
SPINAL CORD AND  
MENINGES

PROSECTED  
98

YOU ARE HERE



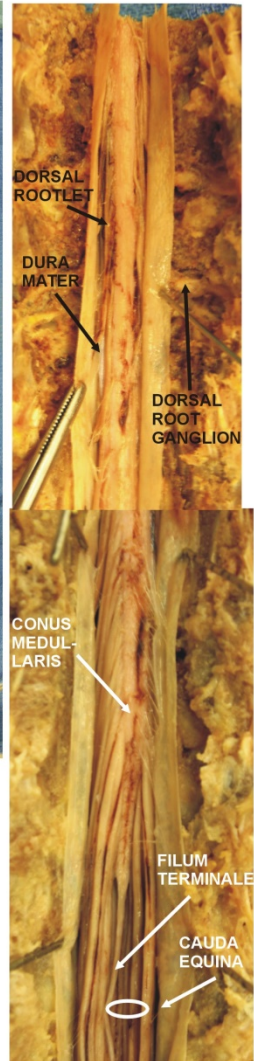
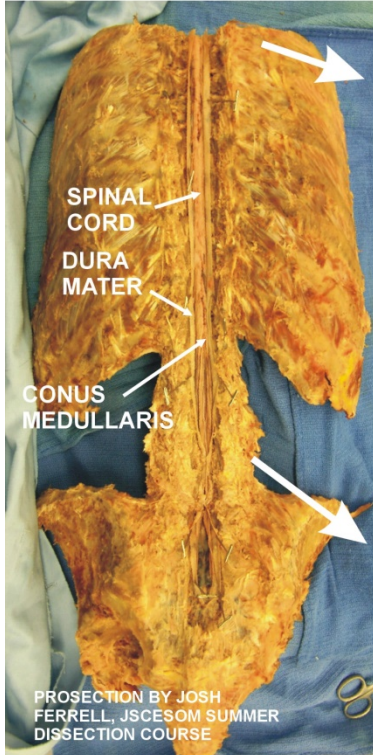
# PROSECTION PROCEDURE: LAMINECTOMY

## SPINAL CORD

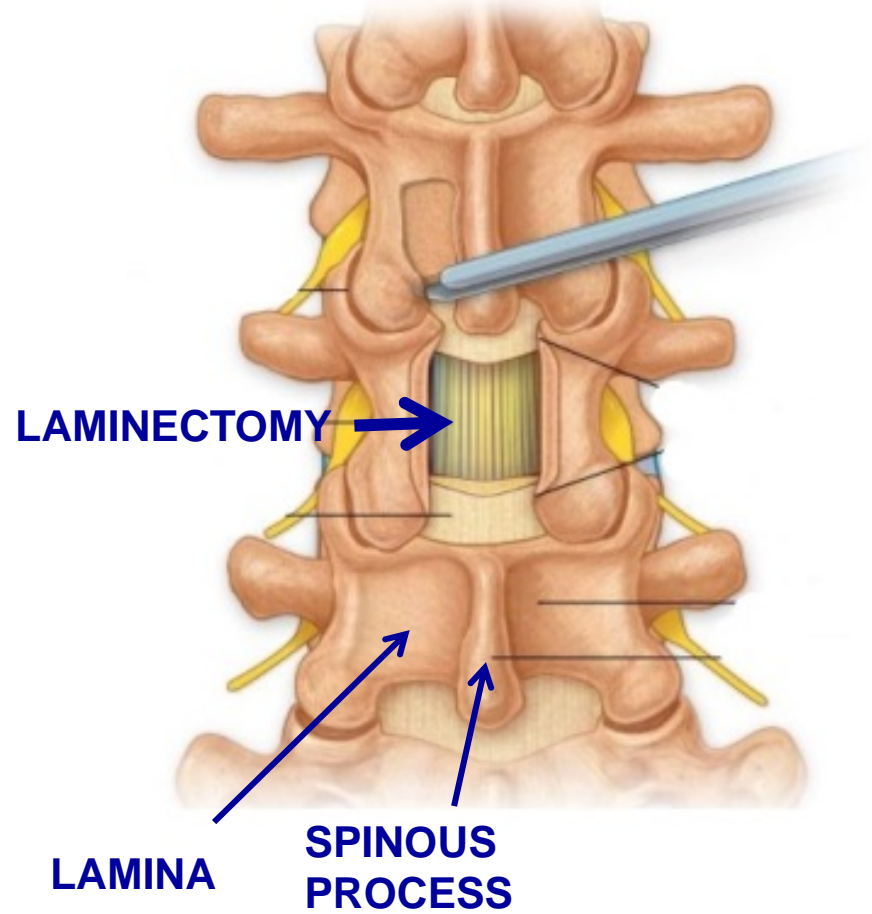
98

LAMINECTOMY = CUTTING LAMINAE (DORSAL PART) OF VERTEBRAE

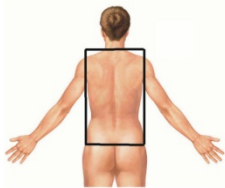
ALL VERTEBRAL LAMINAE, SPINES AND OVERLYING BACK MUSCLES REMOVED



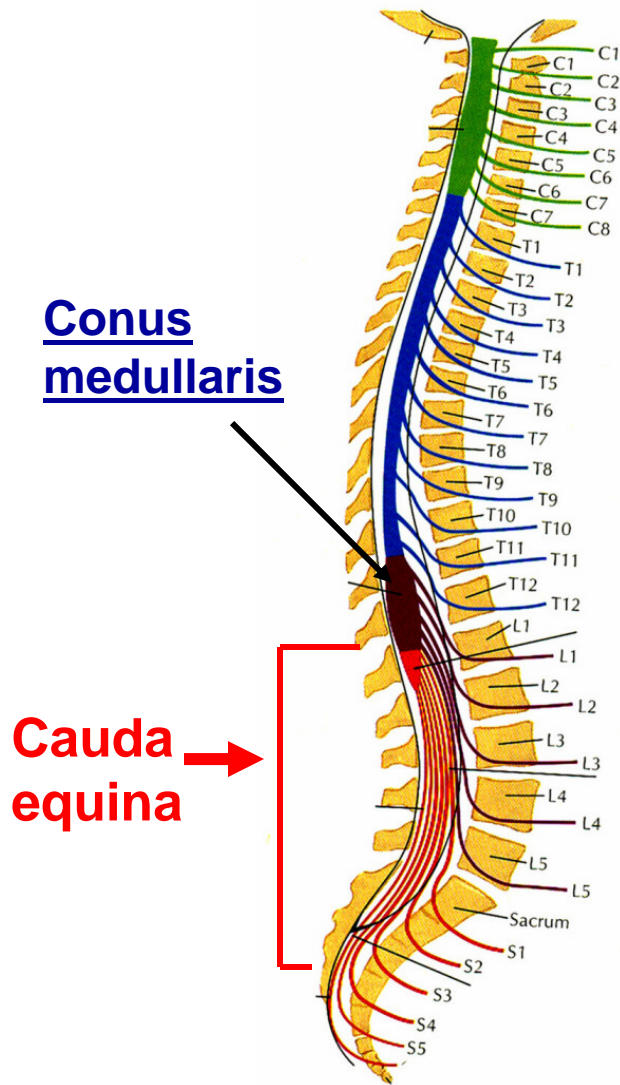
- SPINAL CORD (WITH OVERLYING PIA MATER)
- DURA MATER
- DORSAL ROOTLET
- CONUS MEDULLARIS
- FILUM TERMINALE
- DORSAL ROOT GANGLION
- CAUDA EQUINA



YOU ARE HERE

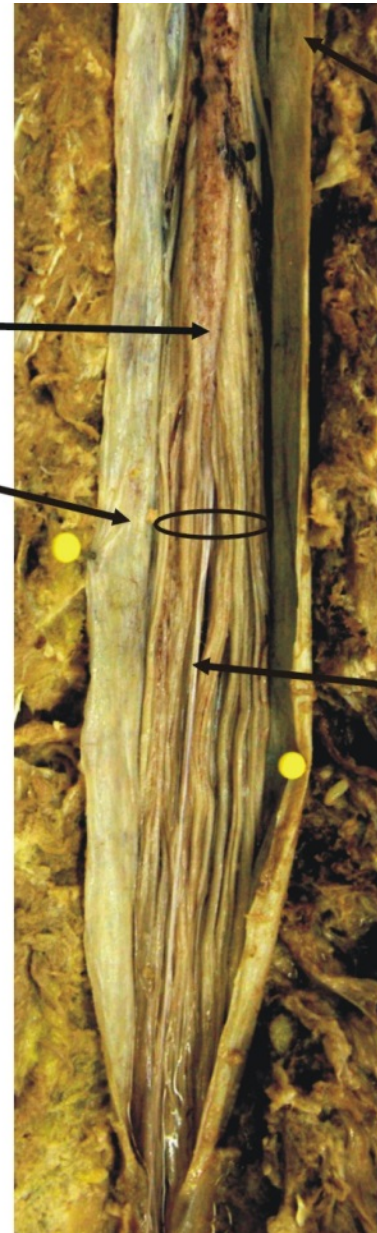


# ORIENTATION



**CONUS  
MEDULLARIS**

**CAUDA  
EQUINA**

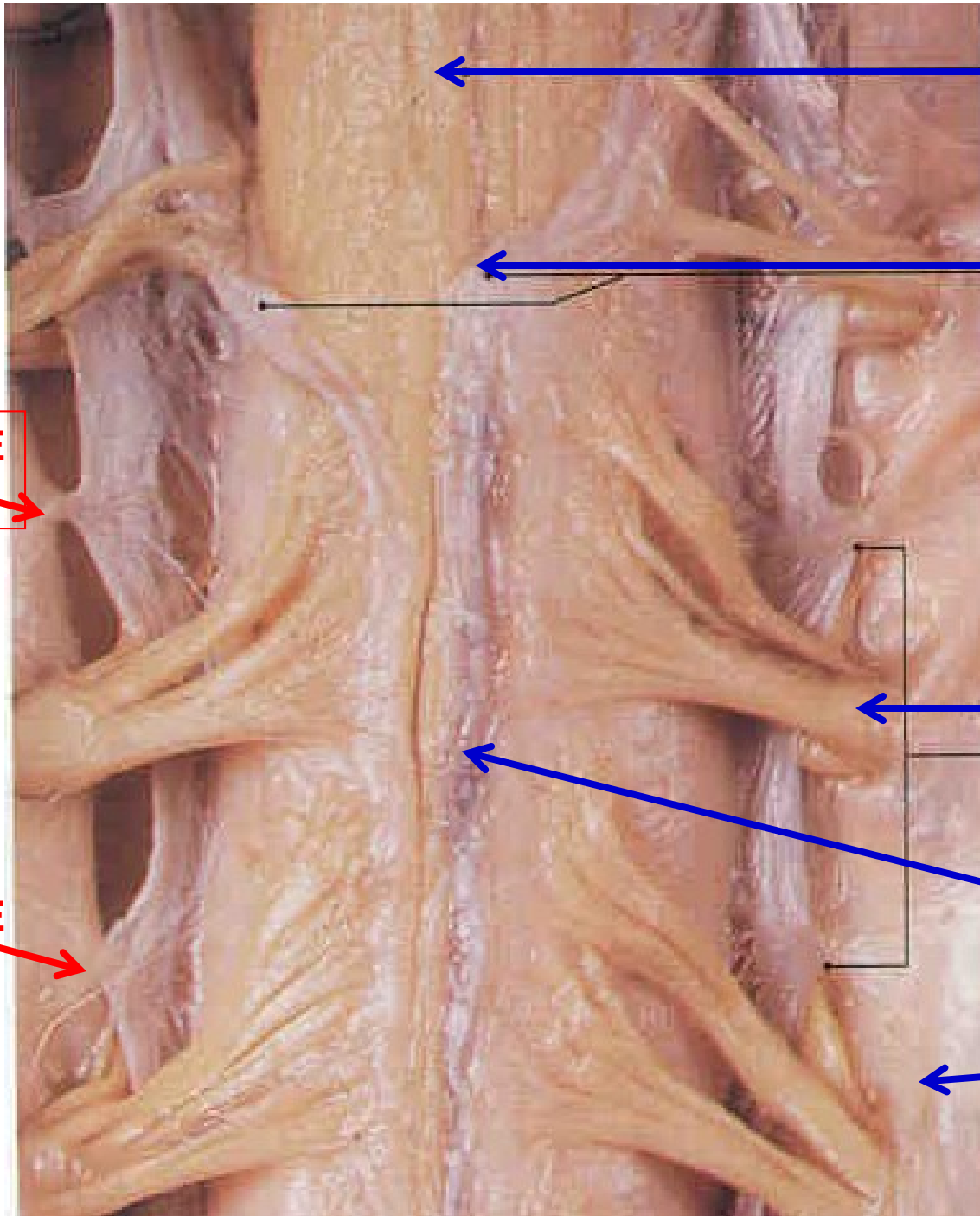


**DURA  
MATER**

**FILUM  
TERMINALE  
(looks white,  
continuous  
with Conus  
medullaris)**

**Filum Terminale - extension of Pia Mater from Conus Medullaris to first coccygeal vertebra (Co1)**

**ORIENTATION**



**SPINAL CORD**

**PIA MATER**

**DENTICULATE  
LIGAMENT**

**VENTRAL  
ROOT**

**DENTICULATE  
LIGAMENT**

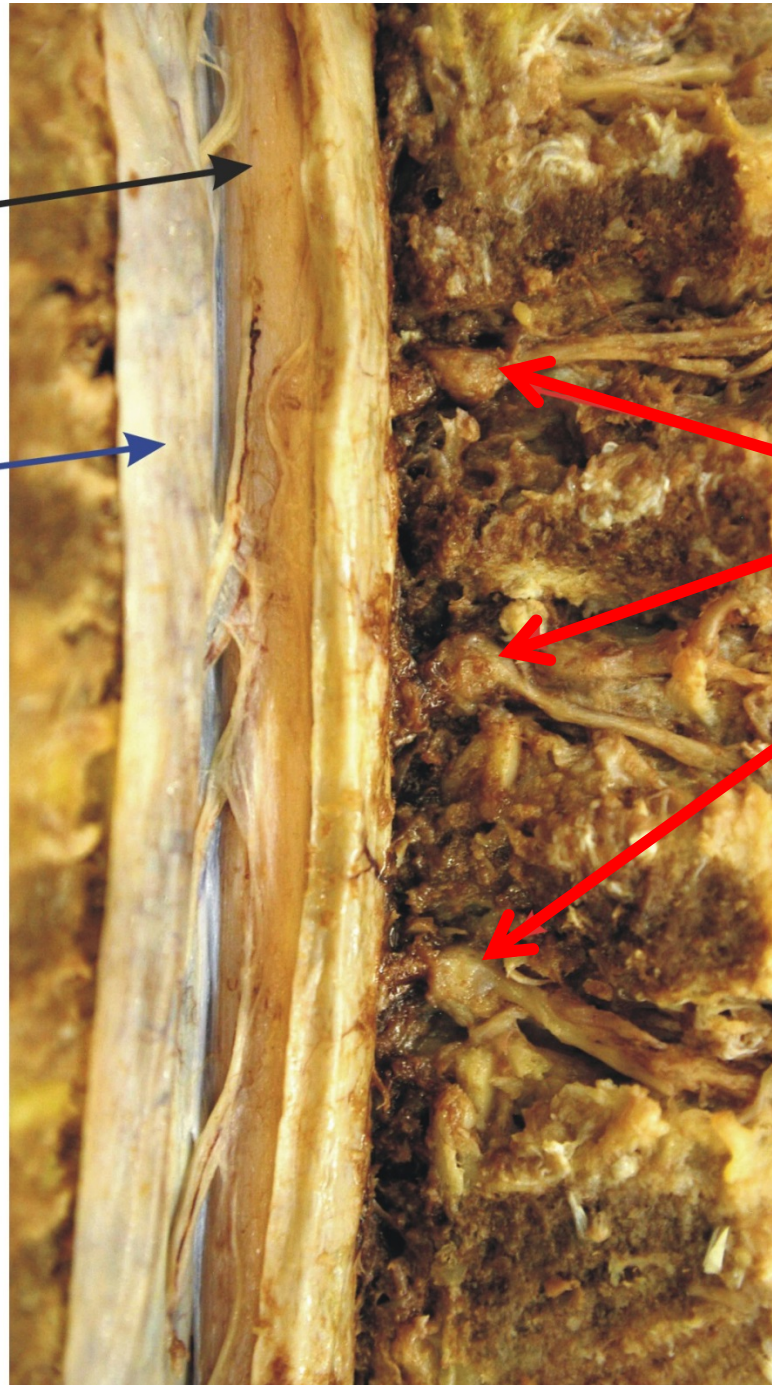
**BLOOD  
VESSEL**

**DURA MATER**

**ORIENTATION**

**SPINAL  
CORD**

**DURA  
MATER  
(cut  
and  
reflected)**



**DORSAL  
ROOT  
GANGLIA**

**Dorsal Root  
Ganglia - only  
contain cell  
bodies of  
sensory  
neurons**