

PROSECTON OF BACK

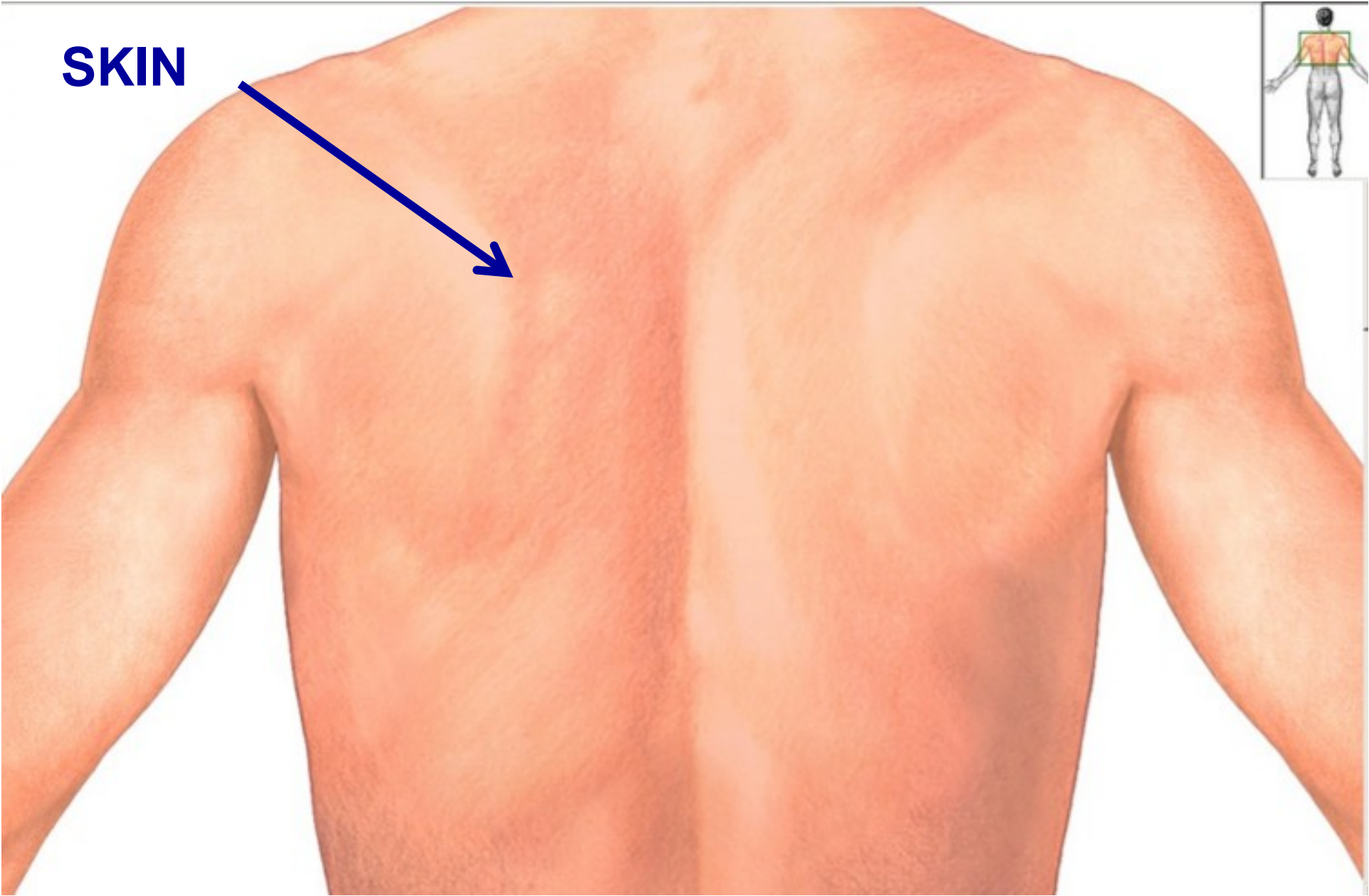
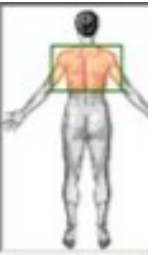
**VIRTUAL DISSECTION AND PROSECTIONS
PICTURES**

GROSS ANATOMY

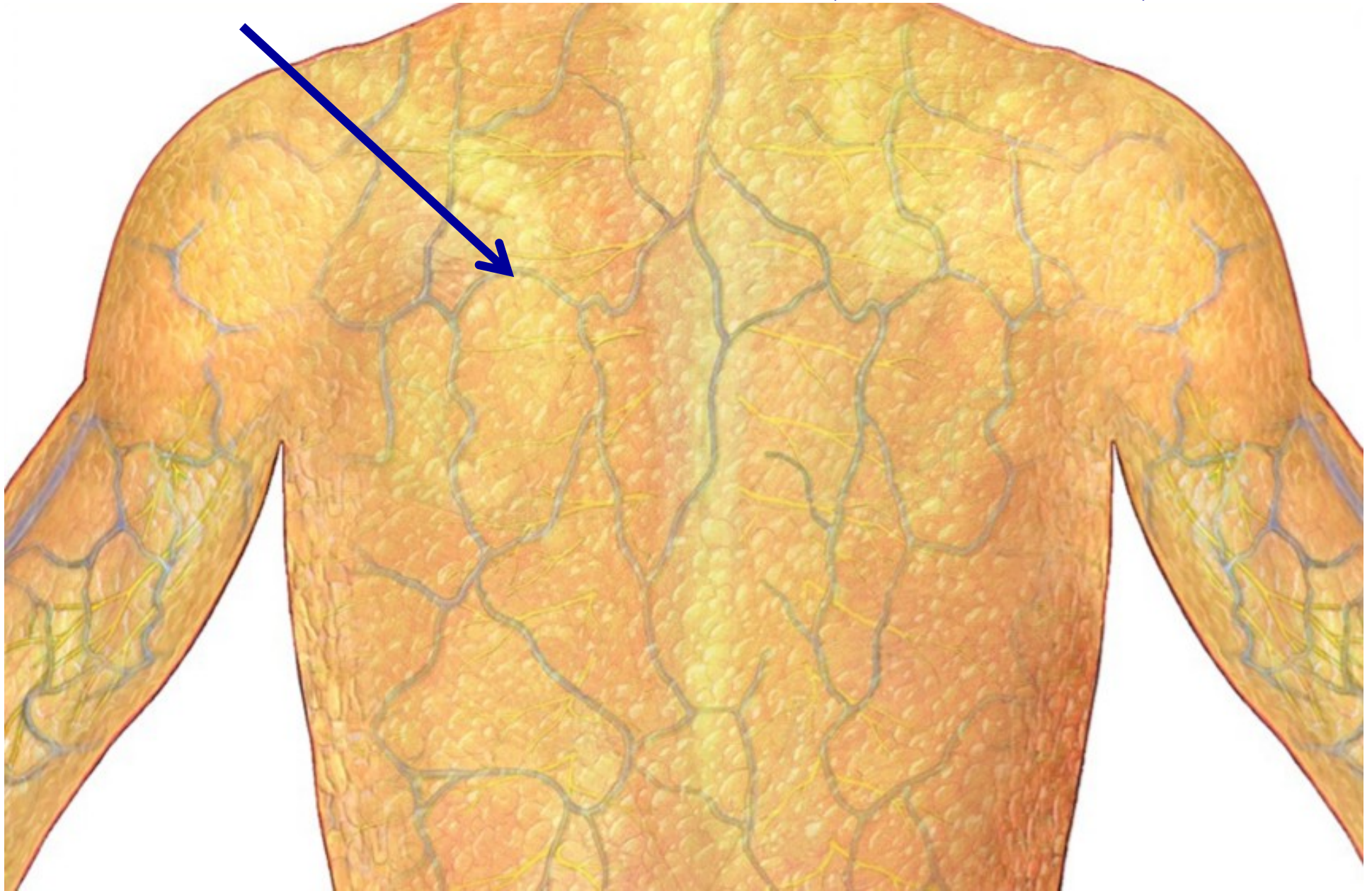
ORTHO/NEURO 2021

Note: Muscles are successively removed in this sequence; in the lab the muscles are reflected (pulled laterally) but remain attached to their insertions.

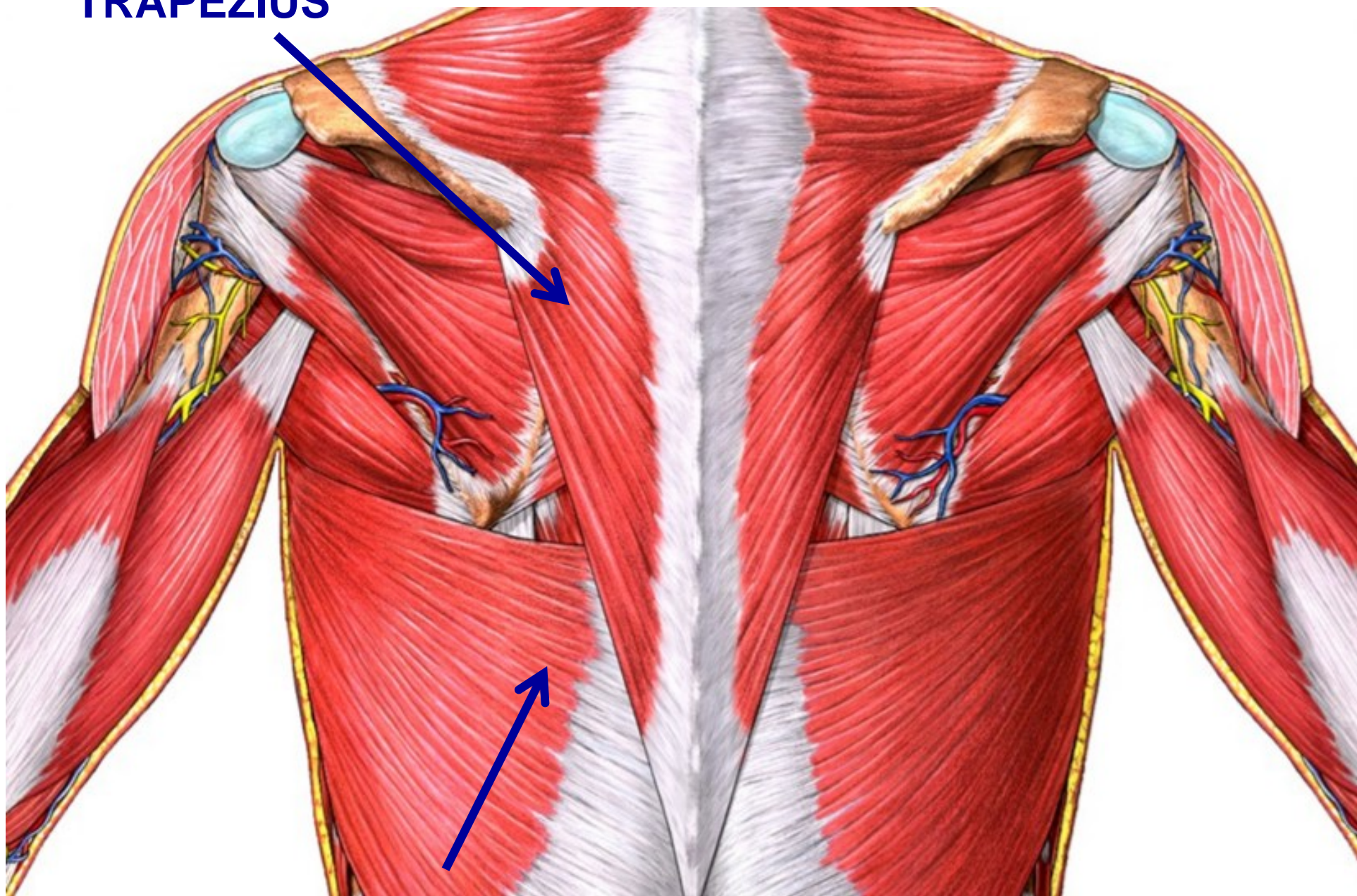
SKIN



SUPERFICIAL FASCIA – contains fat, cutaneous nerves, blood vessel

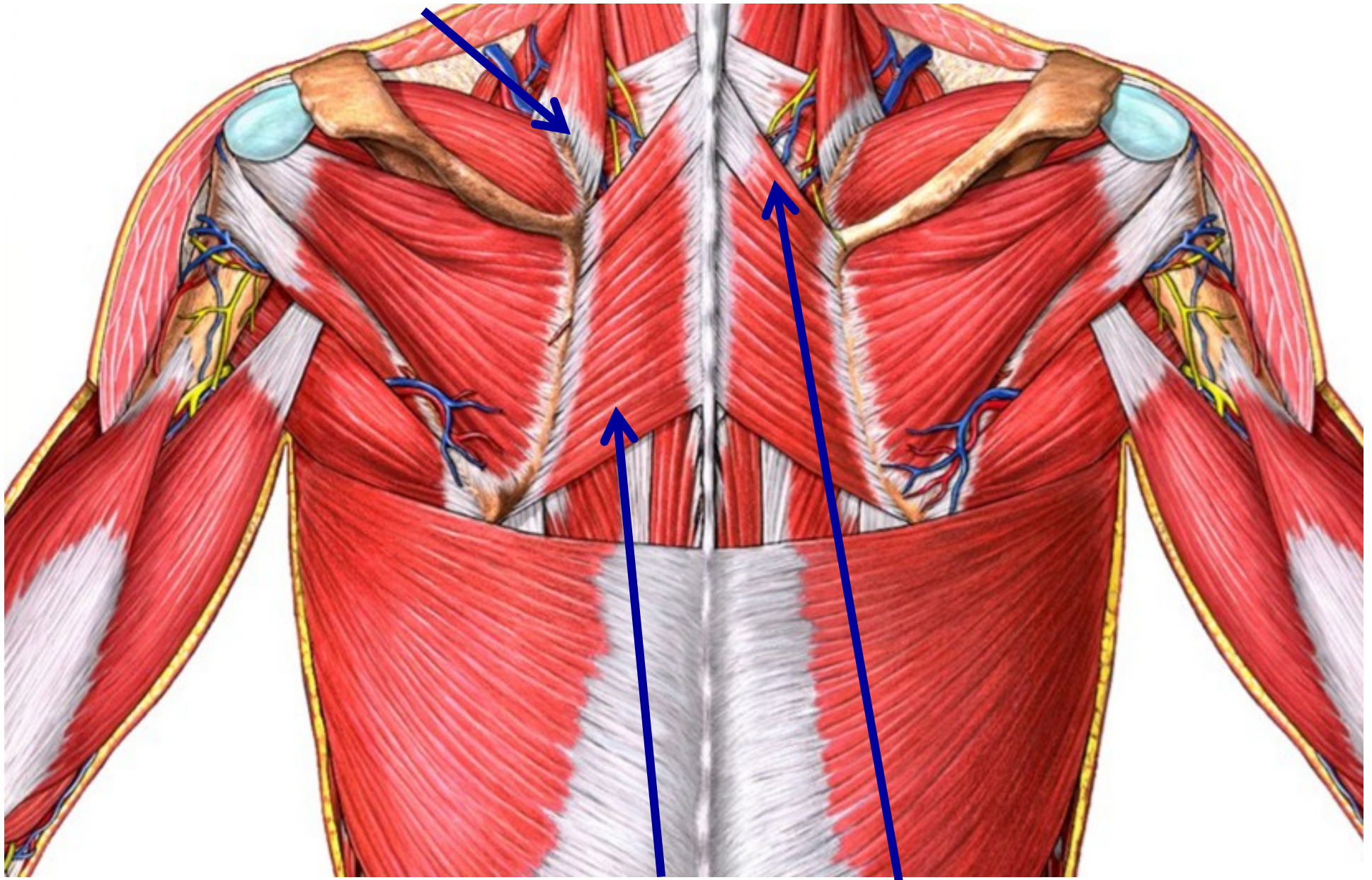


TRAPEZIUS



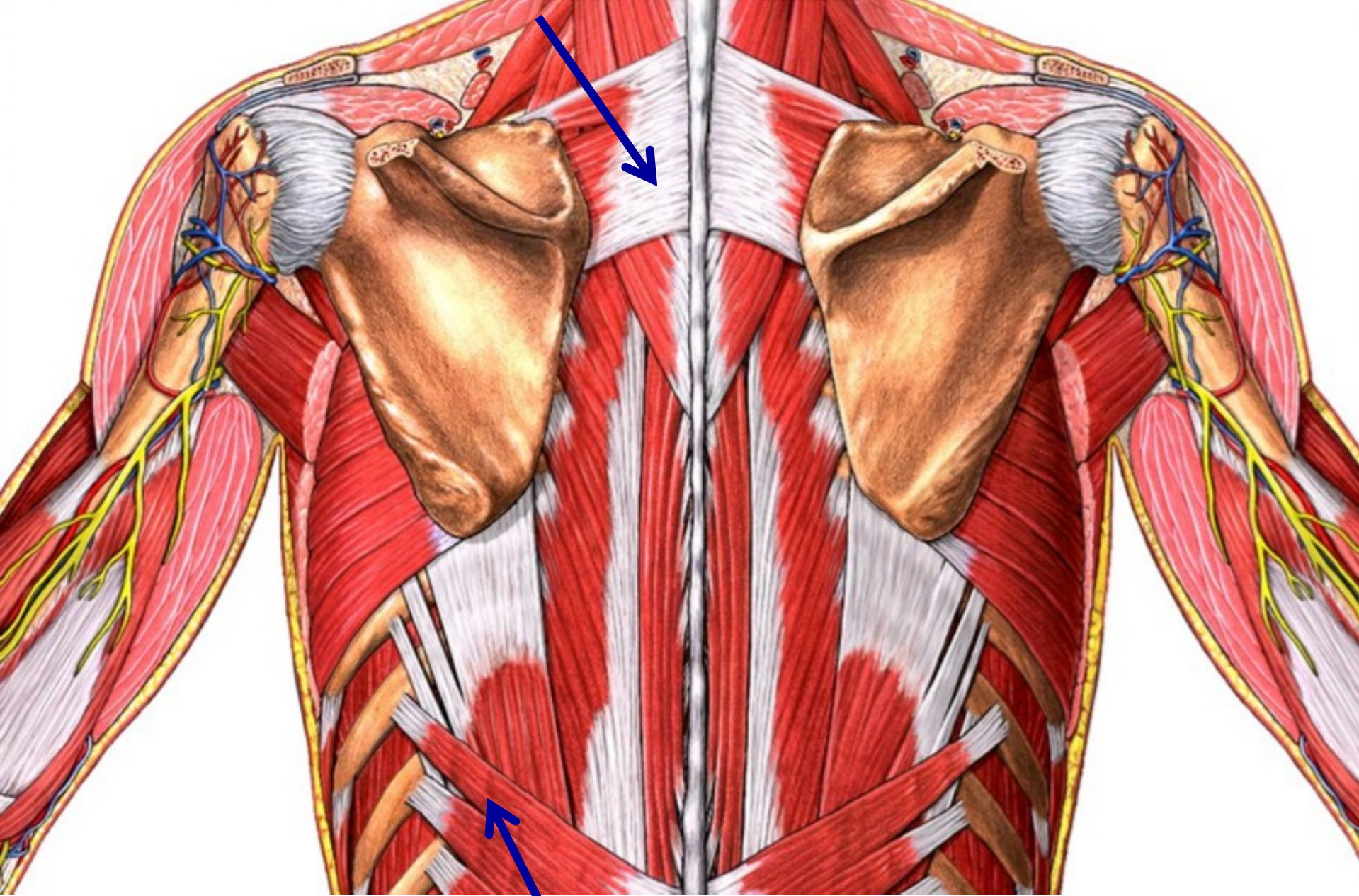
LATISSIMUS DORSI

LEVATOR SCAPULAE



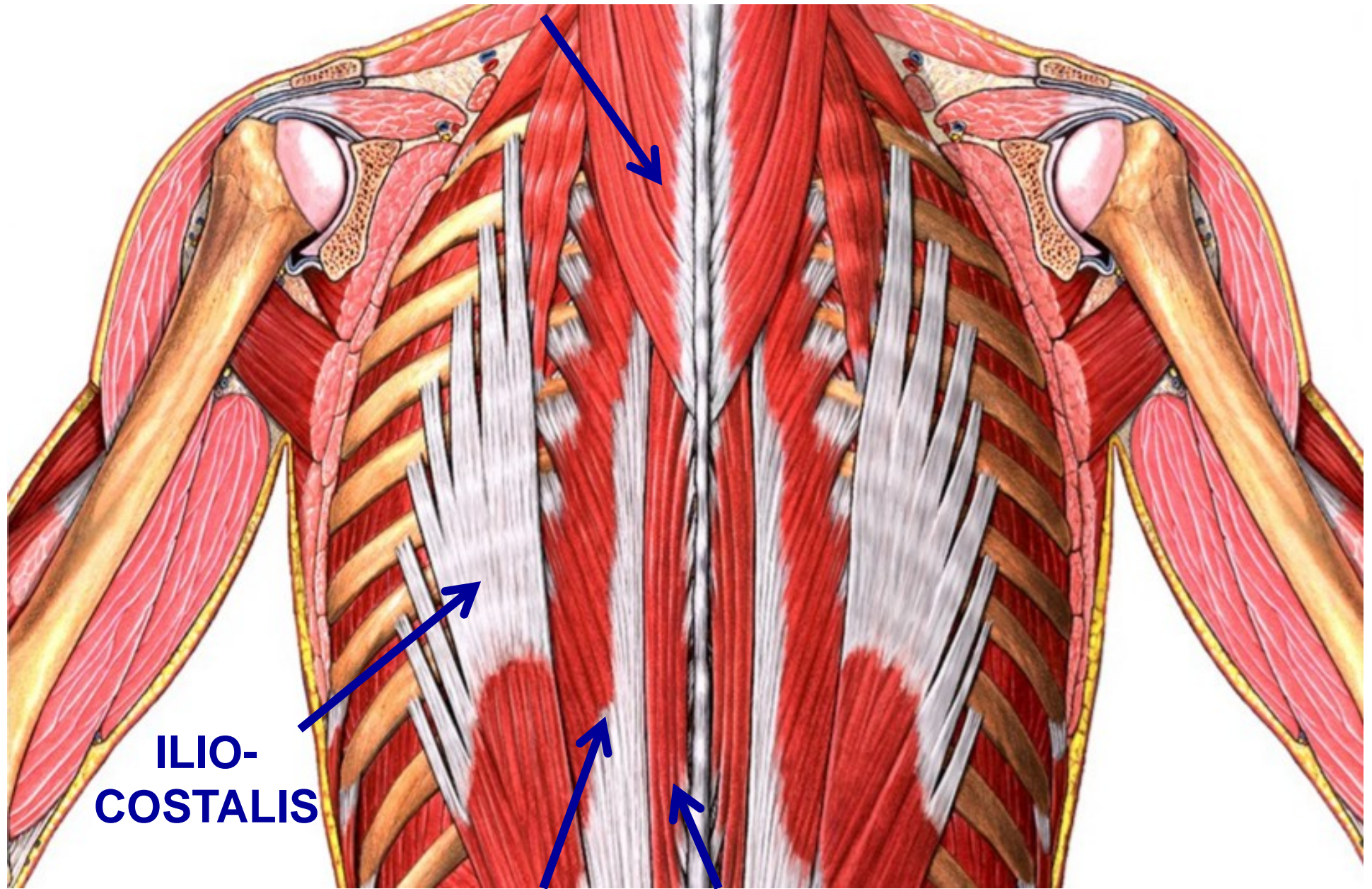
RHOMBOIDEUS MAJOR (inferior part), MINOR (superior part)

SERRATUS POSTERIOR SUPERIOR



SERRATUS POSTERIOR INFERIOR

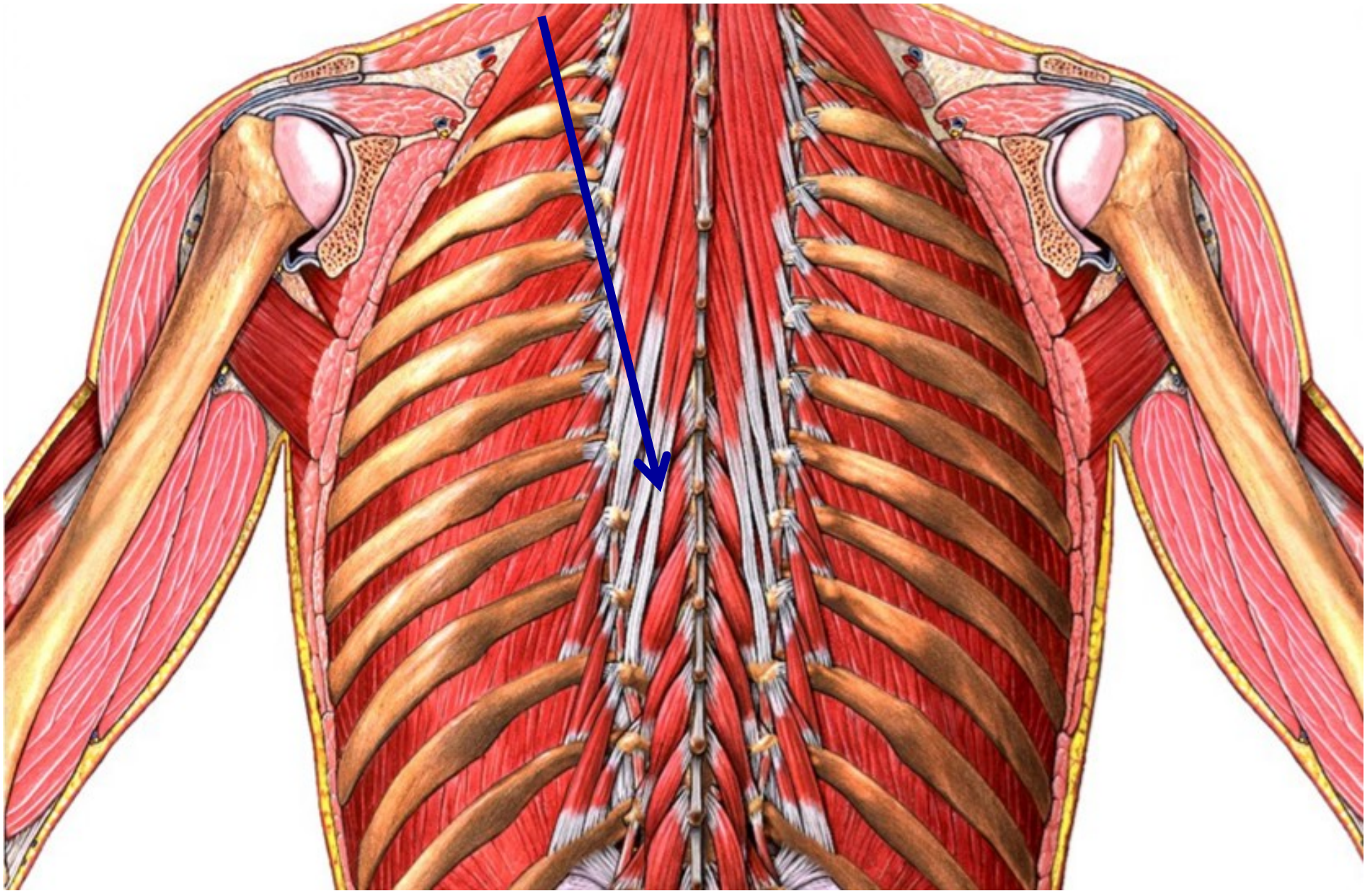
SPLENIUS



**ILIO-
COSTALIS**

LONGISSIMUS SPINALIS

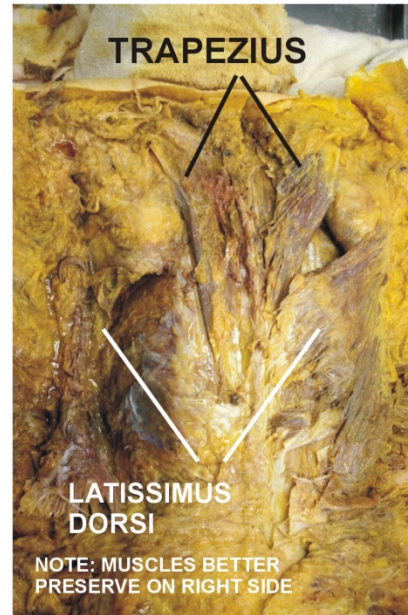
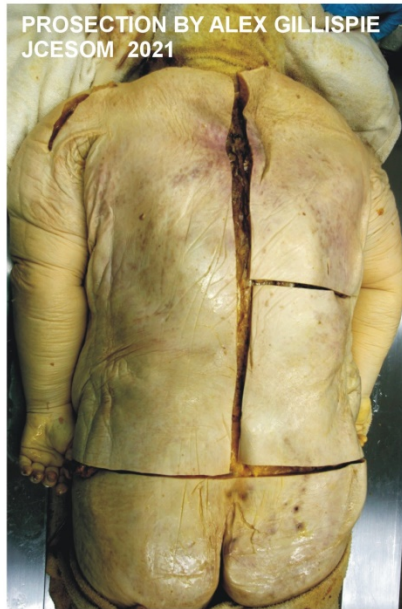
TRANSVERSO-SPINALIS



MUSCLES OF BACK: FIRST LAYER - MUSCLES OF SCAPULA AND UPPER EXTREMITY

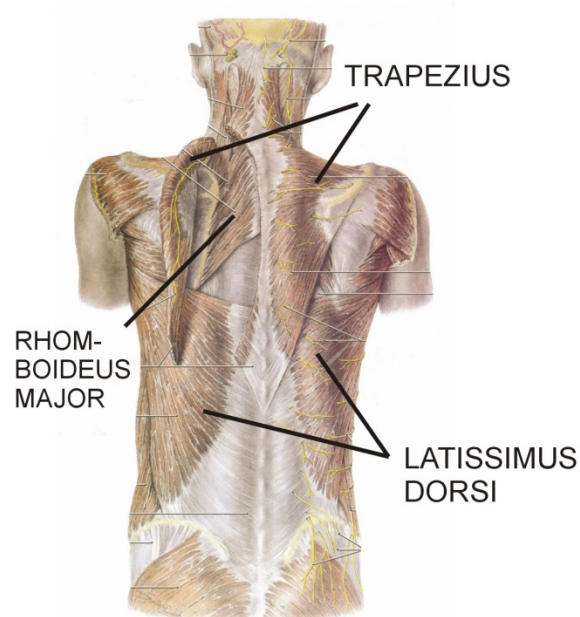
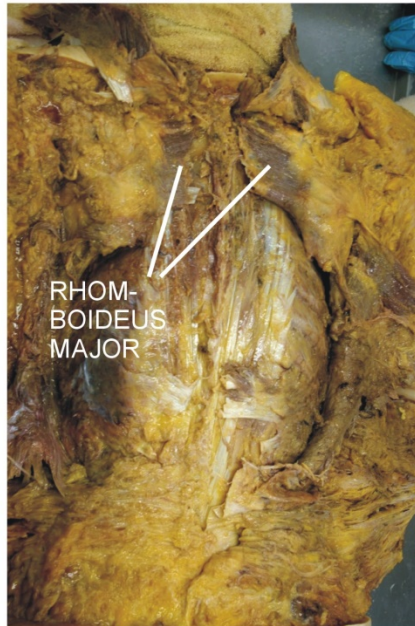
BACK 1

REFLECT SKIN LATERALLY



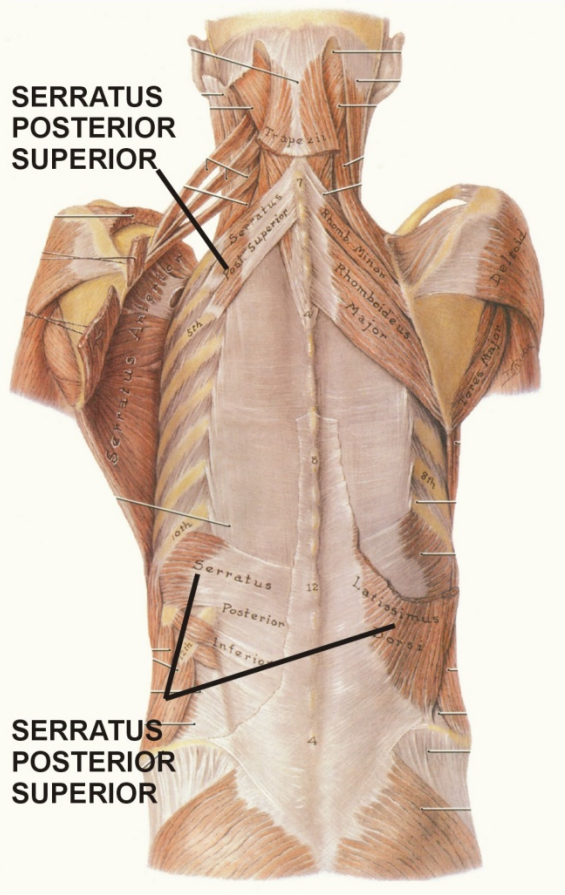
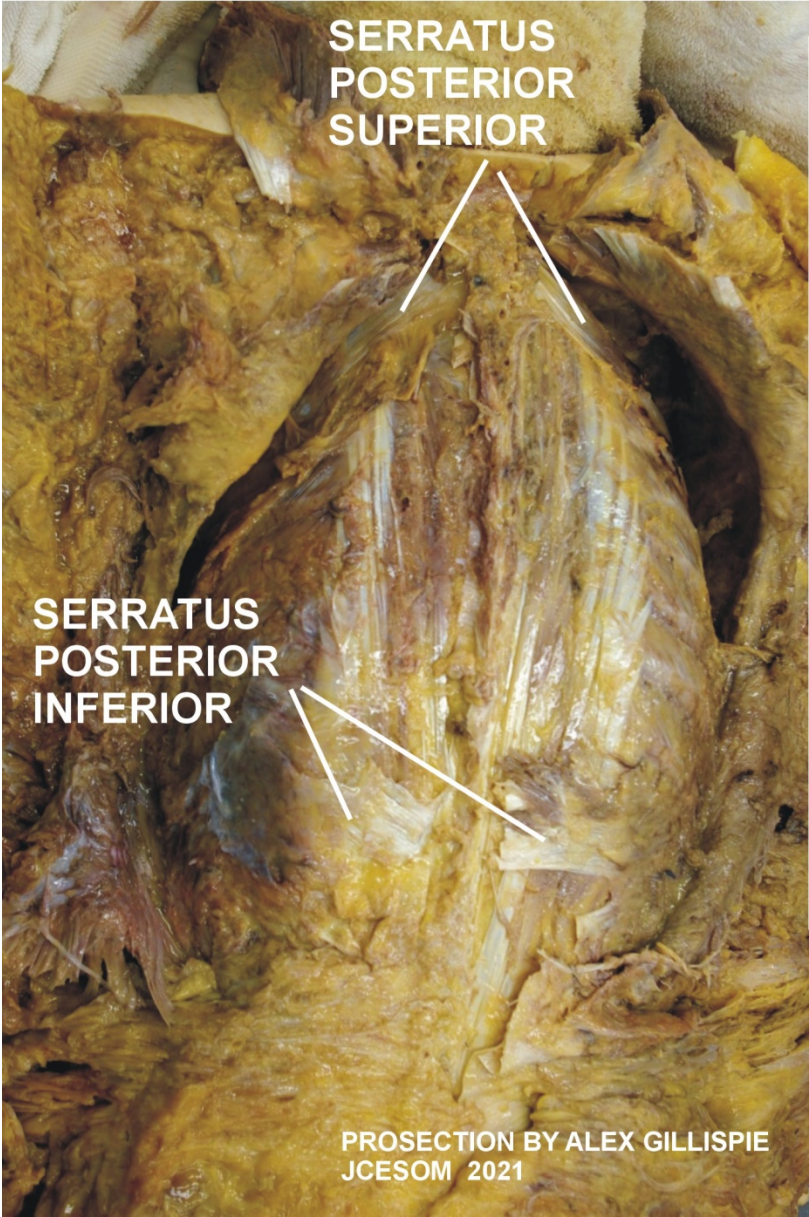
Note: Obese cadaver; some muscles not dissected (ex. Rhomboideus minor, Levator scapulae)

REFLECT TRAPEZIUS AND LATISSIMUS LATERALLY



MUSCLES OF BACK: SECOND LAYER - ACCESSORY MUSCLES OF RESPIRATION

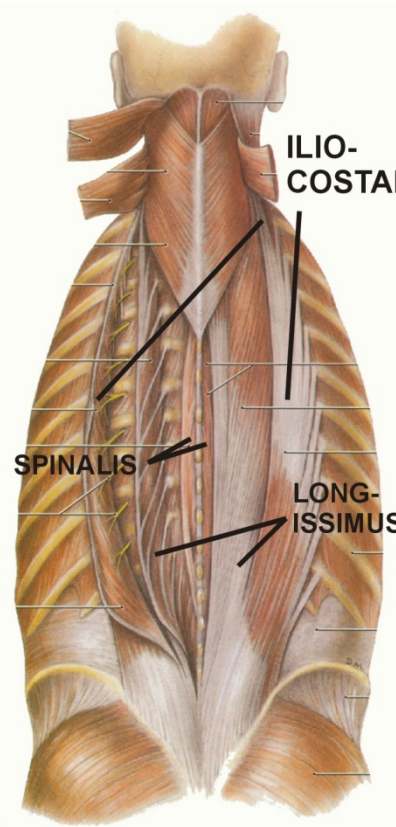
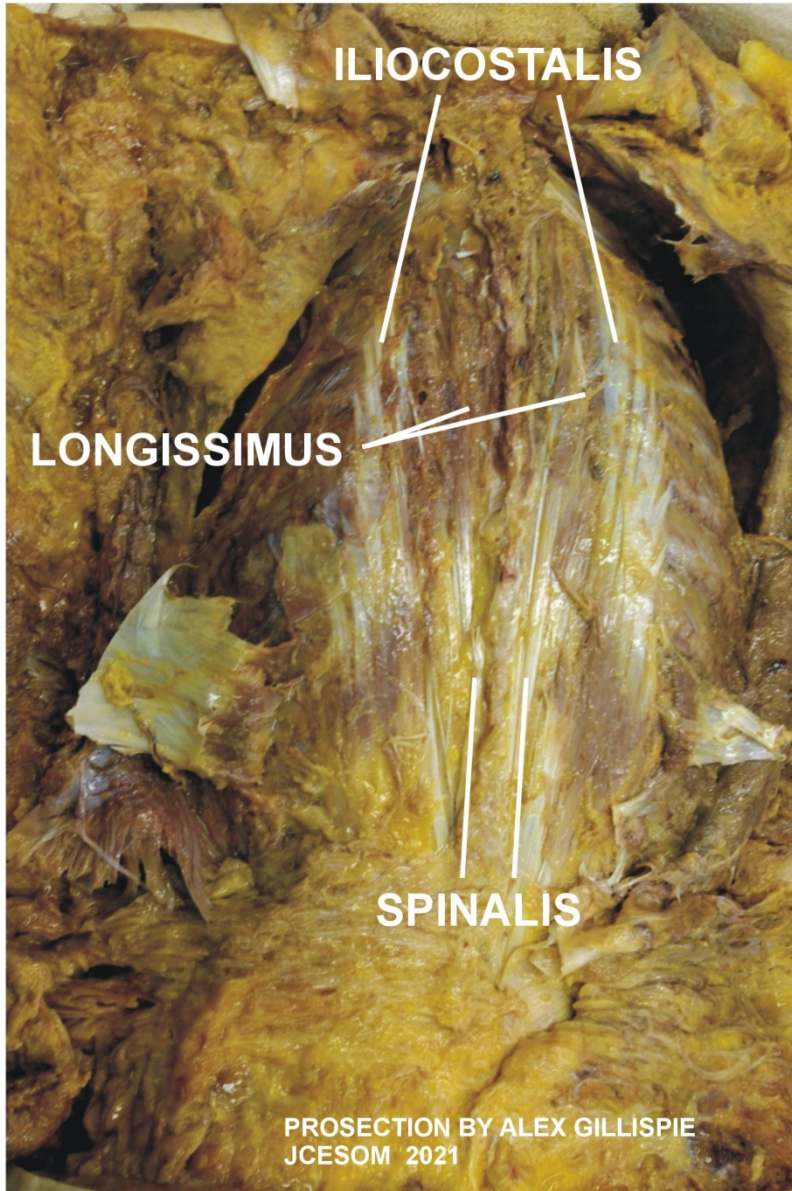
RHOMBOIDS, TRAPEZIUS, LATISSIMUS DORSI REFLECTED



MUSCLES OF BACK: THIRD LAYER - ERECTOR SPINAE

BACK 3

ALL LAYER 1 AND 2 MUSCLES REFLECTED



Note: Obese cadaver; some muscles not dissected (ex. Splenius, Transversospinalis)